

Creo™ Elements/Direct™ Part Library

A COMPLETE LIBRARY OF STANDARD COMPONENTS SAVES TIME, EFFORT AND COSTS

Formerly CoCreate®

With Creo Elements/Direct Part Library, you can leverage over 170,000 standard parts to quickly create your product design.

Easily insert standard components such as bolts, washers, nuts, bearings and miscellaneous hardware, into product designs. Accelerate the design process by using pre-modeled parts that meet ANSI, DIN, ISO and JIS standards.

Key Benefits

- Easily insert standard fasteners and components into product designs and avoid spending time modeling off-the-shelf components.
- Fully detail product designs to include all components and fasteners. Eliminate errors in fastener selections and housing constraints. Your first prototype can be your only prototype.
- Optimize cost-savings by designing with company-standard manufacturing components.
- Add Creo Elements/Direct Model Manager to automatically generate a complete manufacturing bill-of-materials that includes all details of the product design.
- Automatically insert product manufacturing information directly into your model using the embedded design intelligence of Creo Elements/Direct Part Library components.
- Speed drawing-creation by transferring product manufacturing information associated with Creo Elements/Direct Part Library components directly to drawings within Creo Elements/Direct Annotation.

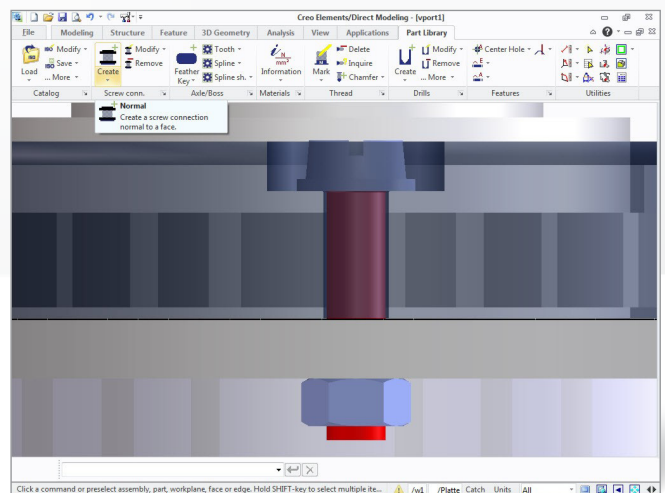
Features and Specifications

Standard parts library

- Take advantage of DIN, ISO, ANSI, and JIS standards with more than 170,000 parts: screws, nuts, washers, rings, bolts, section steel, bearings, and more
- Simply position standard parts in the design
- Define company-standard parts with a graphical user interface, and merge company-specific parts with standard parts
- Add or copy designed parts (parametric parts requires Creo Elements/Direct Advanced Design)
 - Easily manage similar parts with different materials

User-specific standards

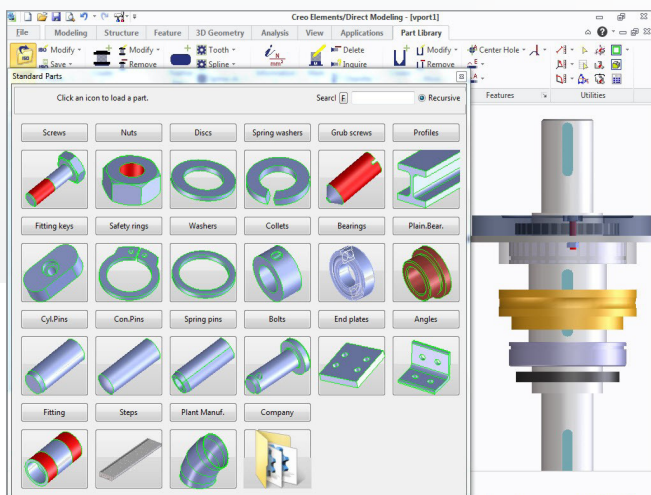
- Add additional standards to user-specific area



Create and modify multiple screw connections complete with drilled holes and accessories (such as nuts and washers) in one step.

Assign materials

- Allocate materials to assemblies and parts (also recursively)
- Select materials within tables
- Assign color, density, reflection, and transparency
- Automatically apply materials from the bill-of-materials
- Customize material table via menus



Creo Elements/Direct Part Library is packed with an extensive list of parts. Extra components are easily added for specialized needs.

Threads

- Mark thread faces in Creo Elements/Direct Modeling
- Automatically correct thread diameter
- Guarantee correct representation in Annotation
- Modify and inquire threads

Drills

- Create and modify drills and drill patterns
- Drill according to DIN or user-defined parameters
- Drill through several parts
- Automatically dimension drills in Annotation
- Add manufacturing-related information during definition of bore holes

Fixture connection wizard

- Quickly create and modify complete bolted connections, including the drills (through several parts), screws, nuts, and washers
- Work easily with a wizard-based user interface
- Immediately see selected parameters

Tolerance and fit

- Place tolerance & fit table on drawings
- Easily edit and use tolerance fit table
- Customize material via menus

Integrated with Creo Elements/Direct Model Manager

- Find standard parts automatically stored in Creo Elements/Direct Model Manager
- Manage company-specific standard parts
- Assign article numbers used with database

Platform requirements

Creo Elements/Direct Part Library supported operating systems:

- Windows® 7 32-bit and 64-bit Editions of Ultimate, Enterprise, and Professional
- Windows Vista® 32-bit and 64-bit Editions of Ultimate, Enterprise, and Business
- Windows XP Professional 32-bit and 64-bit Editions

For the most up-to-date platform support information visit: PTC.com/partners/hardware/current/support.htm

For more information, visit PTC.com/products/creo-elements-direct/

© 2011, Parametric Technology Corporation (PTC). All rights reserved. Information described herein is furnished for informational use only, is subject to change without notice, and should not be construed as a guarantee, commitment, condition or offer by PTC. PTC, the PTC logo, Creo, Elements/Direct, CoCreate and all PTC product names and logos are trademarks or registered trademarks of PTC and/or its subsidiaries in the United States and in other countries. All other product or company names are property of their respective owners. The timing of any product release, including any features or functionality, is subject to change at PTC's discretion.

6770–Creo Elements/Direct Part Library–DS–EN–0711