



PTC Product Focus: [A\) Pro/INTRALINK \(Pro/I\)](#)

[B\) How do Product Structures Get Into Windchill PDMLink?](#)

Tips of the Week: [A\) Control Your Pro/I Environment w/ Pro/Preferences](#)

[B\) Windchill PDMLink – Product Structures - How to View & Compare Bill of Material in Different Ways?](#)

Announcements: [Most Recent Announcements](#)

Upcoming Events & Training Schedule: [Events & Training Schedule](#)

PTC Product Focus

Pro/INTRALINK

[Click Here To View](#)

[Back To Top](#)

PTC Product Focus

How do Product Structures Get Into Windchill PDMLink?

A product structure identifies all the components necessary to build a product. It includes mechanical, electronic, and software components. The mechanical design data coming from a CAD tool, such as Pro/ENGINEER, provides a starting point for creating the product structure. The interrelationships between the CAD data files are used to create the appropriate interrelationships between parts in the product structure in Windchill PDMLink.

PTC offers a wide variety of WorkGroup manager products that can automatically publish the CAD DATA and product structure information into Windchill PDMLink from various CAD tools and help create a starting product structure. Also, PTC offers a variety of integration bridges called gateways that allow the customer to link Windchill PDMLink with their workgroup data management solution, like Pro/INTRALINK.

Once a starting product structure is published in Windchill PDMLink, Customers can create several variations of that structure based upon the needs of their product development process. When you display a product structure, you can specify criteria by which it is sorted and expanded, using a *configuration specification*. For example, you can display only parts that are in a "Released" state, or a manufacturing *view*, which represents how the product might be structured when it is assembled.

In addition to the WorkGroup Managers and Gateways for various CAD/PDM applications, PTC's Pro/Engineer Wildfire (the next generation Pro/Engineer) offers Person-to-Web connectivity that enables seamless integration to all of our Windchill Solutions including Windchill PDMLink. The real power of Pro/ENGINEER Wildfire is the ability for Pro/ENGINEER to "plug into" the web services that are offered by Windchill applications. This application-to-application integration, over the web, using standard protocols is the essence of Pro/ENGINEER Wildfire, making it even easier for the end user to integrate PLM tools into their design environment.

[Back To Top](#)

Tips of the Week

Controlling Your Pro/Intralink Environment w/ Pro/Preferences

[Click Here To View](#)

[Back To Top](#)

Tips of the Week

Windchill PDMLink – Product Structure – How To View & Compare Bill of Material in Different Ways?

The most important aspect of a product is its *product structure*, a hierarchical representation of all the assemblies and component parts that are necessary to build the product. Windchill PDMLink enables a user to expand a product structure (that is, expand each subassembly) until the lowest-level, component parts are shown. Different types of reports on bill of materials can be generated from the expanded product structure in Windchill PDMLink.

Details for Part CHASIS.ASM (chasis.asm) A - Microsoft Internet Explorer provided by PTC

Windchill-PDMLink

Home Products Change Monitor Collaboration Center Repositories Administration

Details for CHASIS.ASM (chasis.asm) A

chasis.asm —Actions— Go

Responsible Product: WX2211 Motorbike
Number: CHASIS.ASM
Name: chasis.asm
Version: A.2
Type: Separable
Source: Make
View:
Status: Checked in
Cost:

Team Name: CHASIS.ASM (chasis.asm) 288
State: In Work - Released - Cancelled
Created: 2002-04-17 14:47:47 CDT
Created By: Brad.CADDesigner
Updated By: Brad.CADDesigner
Last Updated: 2002-05-01 11:30:12 CDT

Available Inventory:

Configuration: Latest 'Design' including work in progress Related Reports: Single Level BOM Generate Report

Product Structure

Name	Actions	Number	Version	State	Quantity
chasis.asm		CHASIS.ASM	A	In Work	
frame.asm		FRAME.ASM	A	In Work	1 each

Product Structure

Name	Actions	Number
chasis.asm		CHASIS.ASM
frame.asm		FRAME.ASM
front forks.asm		FRONT_FORKS.ASM
fork slider l.prt		FORK_SLIDER_L.PRT
fork slider r.prt		FORK_SLIDER_R.PRT
fork tube cap.prt		FORK_TUBE_CAP.PRT

From the Related Reports drop down, you have four easy options to view, compare and get an in-depth understanding of the Bill of Material.

First, when you select Single Level BOM and click on the Generate Report, you get a single level BOM report for that assembly and all the subassemblies and subcomponents underneath that assembly.

Responsible Product: WX2211 Motorbike	Team Name: CHASIS.ASM (chasis.asm) 288
Number: CHASIS.ASM	State: In Work - Released - Cancelled
Name: chasis.asm	
Version: A2	Created: 2002-04-17 14:47:47 CDT
Type: Separable	Created By: Brad.CADDesigner
Source: Make	Updated By: Brad.CADDesigner
View:	Last Updated: 2002-05-01 11:30:12 CDT
Status: Checked in	
Cost:	
Available Inventory:	

Configuration: Latest 'Design' including work in progress Related Reports: Single Level BOM **Generate Report**

Product Structure: [All] Expand One Expand All Collapse Show Documents Hide Documents Show Occurrences Reset

Single Level BOM
 Indented BOM
 Multilevel Where Used
 Multilevel BOM Compare

BOM Parts Listing - Microsoft Internet Explorer provided by P...

File Edit View Favorites Tools Help BOM Parts Listing - Microsoft Internet Explorer provided by P...

Back Forward Stop Home Search Favorites History

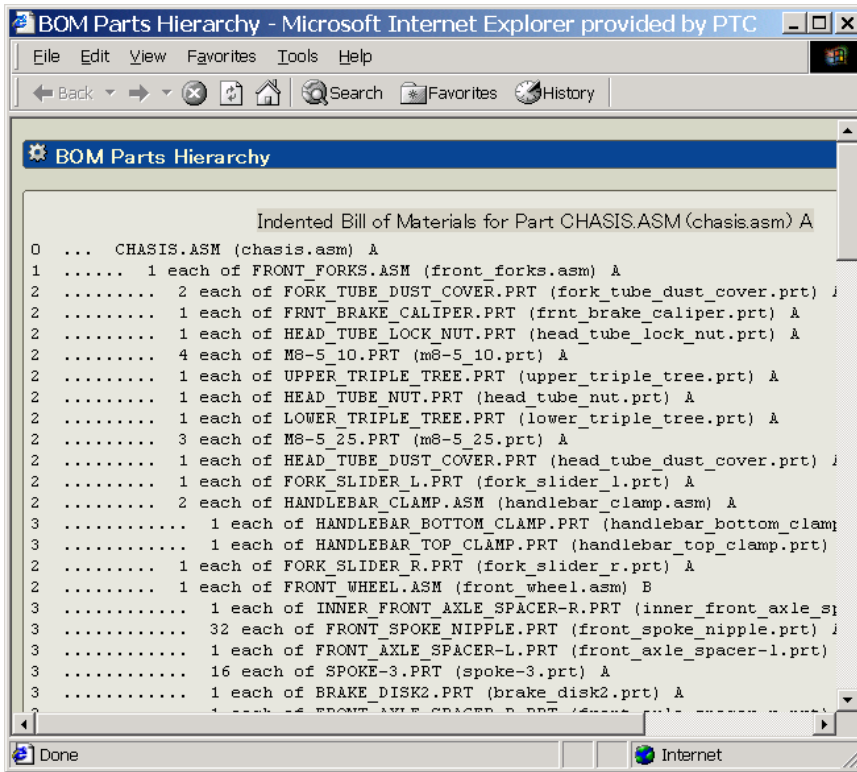
BOM Parts Listing

Single Level Bill of Materials for Part CHASIS.ASM (chasis.asm) A

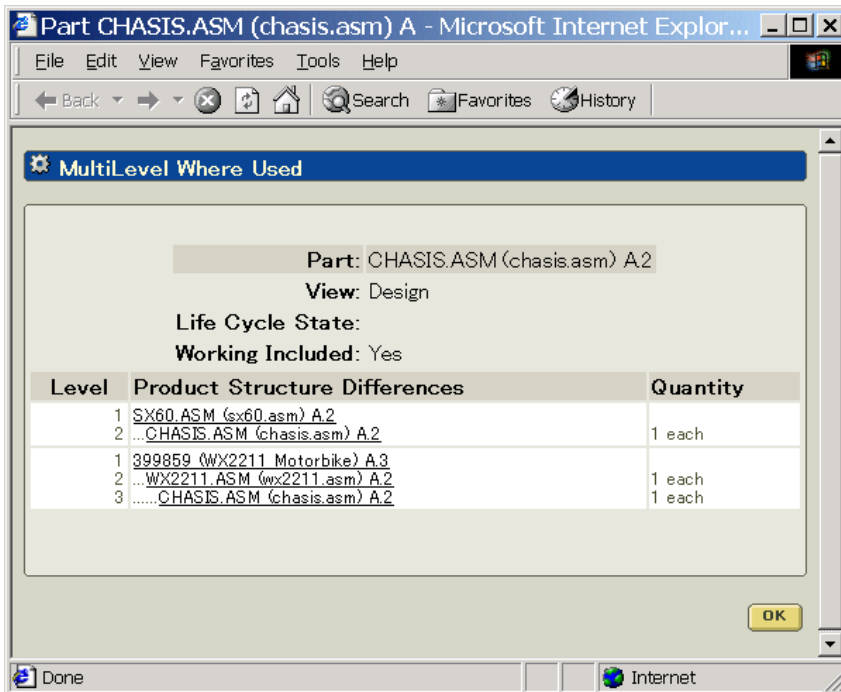
```

1 each of FRONT_AXLE_SPACER-L.PRT (front_axle_spacer-l.prt) A
1 each of SWINGARM_R_O.PRT (swingarm_r_o.prt) A
1 each of SPRING_COLLAR.PRT (spring_collar.prt) A
2 each of FORK_TUBE_CAP.PRT (fork_tube_cap.prt) A
1 each of SWINGARM_AXLE_MNTG_BRKT_R.PRT (swingarm_axle_mntg_brkt_r.prt)
1 each of TAIL_HORIZ_L.PRT (tail_horiz_l.prt) A
1 each of FORK_SLIDER_R.PRT (fork_slider_r.prt) A
1 each of TAIL_FRAME_MOUNT_L.PRT (tail_frame_mount_l.prt) A
1 each of SWINGARM_L_U.PRT (swingarm_l_u.prt) A
1 each of FRONT_HUB.PRT (front_hub.prt) A
1 each of SPRING.PRT (spring.prt) A
1 each of SWINGARM_L_O.PRT (swingarm_l_o.prt) A
1 each of TAIL_FRAME_UPPER_BUSHING.PRT (tail_frame_upper_bushing.prt) A
4 each of 000000021 (rockguard) A (Design)
1 each of HEAD_TUBE_LOCK_NUT.PRT (head_tube_lock_nut.prt) A
1 each of MAIN_FRAME_BRACE.PRT (main_frame_brace.prt) A
1 each of M12-190.PRT (m12-190.prt) A
1 each of SWINGARM_R_U.PRT (swingarm_r_u.prt) A
3 each of M8-5 25.PRT (m8-5 25.prt) A
1 each of MOTOR_MOUNT_TUBE_R.PRT (motor_mount_tube_r.prt) A
2 each of TUBE_END_CAP.PRT (tube_end_cap.prt) A
  
```

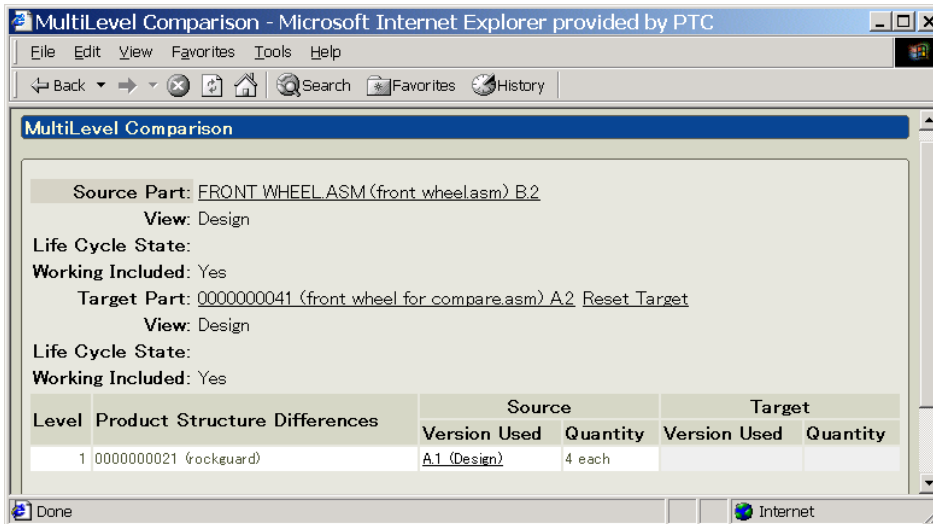
Done Internet



Second, you will be able to select a Single Level Indented BOM report. The generated report under this selection provides easy readability and helps in identifying which components are end item components and which are subassemblies.



Third, with the selection of Multilevel Where Used option, the generated report provides an insight into which assemblies and products this particular assembly is a part of. It provides detailed information on all the usage paths, where each path is traversed all the way to its top-level part or assembly.



Finally, the last option generates a report that compares BOM's of two different baselines of an assembly or two different assemblies.

[Back To Top](#)

Announcements

Customer PTC E-Newsletter Survey

For the past 2 years I've been sending you our Customer PTC E-Newsletter such as this one.

In an attempt to deliver the highest quality and create the most value we would like to use this survey to further our "Learning" Relationship with you, our Customers. Even if you are a first time recipient of the newsletter, please feel free to share your comments on this one you're reading.

It will not take longer than a few minutes to fill out this quick survey as your input is invaluable and we greatly appreciate your input. Please click on the following link to begin:

[To Enter Survey, Please Click](#)

Please note it may be impossible to "Customize" the newsletter to meet every individual request however we will attempt to integrate as many ideas as possible.

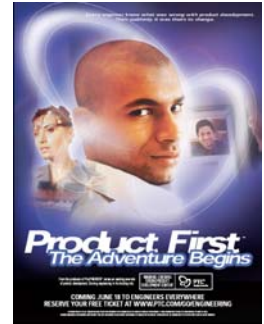
Thank-you very much for your time and feedback as we try to improve this value-added service.

PTC Sponsored Events

Click below to see PTC sponsored events:

<http://www.ptc.com/company/news/events/index.htm>

Click on the poster to gain access to the Product First Virtual Event resource center!! See the software and pick up a screen-saver or two.



E-PROFILES IS HERE!!

We have been eagerly anticipating the debut of the new electronic version of Profiles Magazine and now it is here! This new web site will supplement the print edition of the magazine and will provide new useful features not feasible with paper media. e-Profiles will provide you with 24x7, worldwide access to key information previously available exclusively in the print version. "Tips & Tricks," a popular feature pioneered by Pro/USER, has also moved to the web and will be expanded as the site matures. Future plans include several foreign-language editions of Profiles for our many international readers. Currently, Profiles is printed in English and Japanese.

Please take a few minutes to check out this new web site. We don't think you will be disappointed.

<http://profilesmagazine.com/>

[Back To Top](#)

Upcoming Events & Training Class Schedules

Upcoming, 2003

Your local Pro/Engineer User Groups

<http://www.prouser.org/rugs/>

June 8 - 11, 2003

Pro/USER International Conference - Orlando, FL

<http://www.prouser.org/>

Please visit the [PTC Education Services](#) website for the latest training information including course descriptions, schedules, locations, and pricing.

- Attend a course at any PTC Center and receive a **free** copy of Pro/E 2001 Student Edition!

<http://www.ptc.com/services/edserv/index.htm>

PTC

Note: This PTC E-Newsletter will continue to be used for the following:

- 1) Inform you on events related to PTC products (user groups, conferences, training schedules, etc.)
- 2) Educate you on products that are available at PTC
- 3) Tips & Techniques using PTC Products

Note: These messages are compiled in the local PTC office and will be distributed via e-mail.

[Back To Top](#)