



PTC Product Focus: A) [Pro/ENGINEER - Mathcad Integration](#)

B) [Windchill Business Reporting Overview](#)

Tips of the Month: A) [Multiple Monitor Configuration](#)

B) [Adding Your Company Logo to a Windchill Business Report](#)

Announcements: [Most Recent Announcements](#)

Upcoming Events & Training Schedule: [Events & Training Schedule](#)

## PTC Product Focus

### Pro/ENGINEER - Mathcad Integration

This month's product focus is in video format. Click on the link below to view the information.

[Pro/ENGINEER - Mathcad Integration Video](#)

For more information on the topic, please check the Pro/ENGINEER Mathcad integration resource page:

[Pro/ENGINEER-Mathcad Integration Resource Page](#)

[Back To Top](#)

## PTC Product Focus

### Windchill Business Reporting Overview

[Click Here To View](#)

[Back To Top](#)

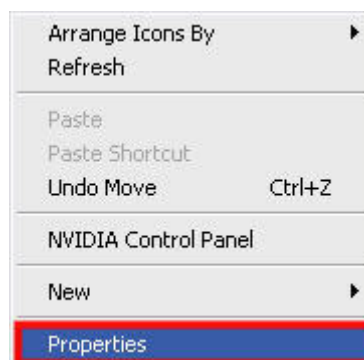
## Tips of the Month

### Multiple Monitor Configuration

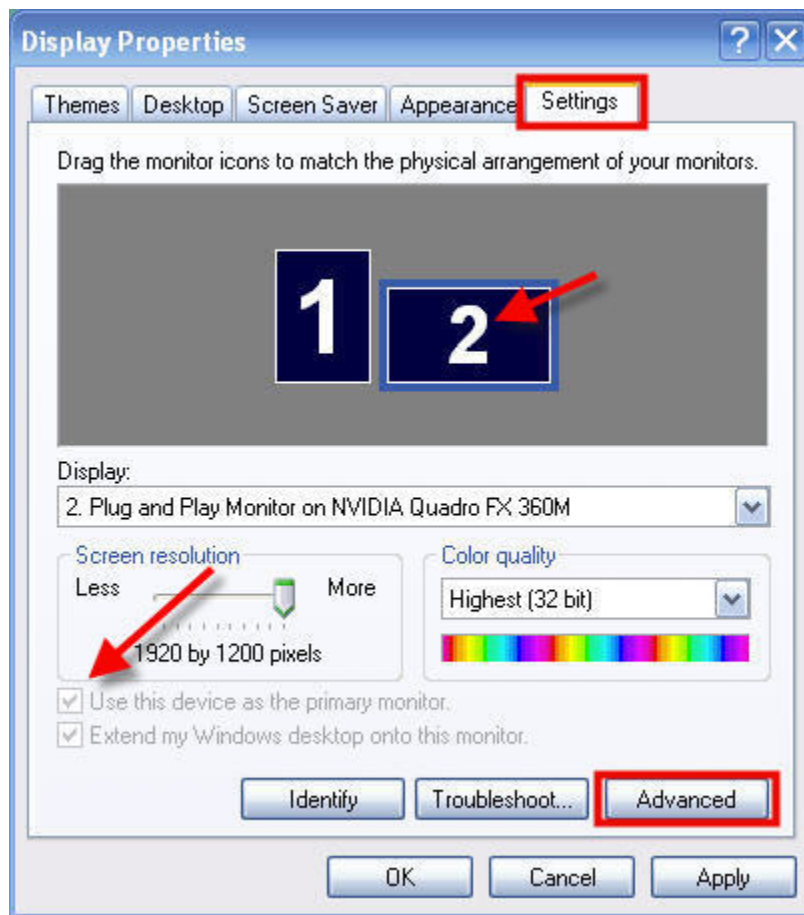
As an application engineer I've had the opportunity to travel to many different work areas. I've seen that many sites are strangely similar in the way they conduct their business. Many companies will provide their CAD workers with a dual-monitor configuration where everyone has set it up very much the same; both monitors side-by-side. The monitor on the right is typically set as the default monitor and the monitor on the left typically is reserved to use to view documents, email, spreadsheets, etc. This tip may give you a slightly different perspective on your multi-monitor configuration. Also note that it is not supported by PTC so Tech Support will not be able to assist you w/ any calls around dual monitor configuration.

Many LCD's can be oriented vertically as opposed to horizontally. This option can really provide us with some added flexibility and usable real estate to work on. (Note: some LCD monitors do not rotate at all, some rotate freely, and some rotate through a locking mechanism) I will describe the means in which to do this, but first check that the monitor does not automatically do this. Many monitors will change the orientation of the image when physically rotated. If physically rotating the display does not automatically change its view (i.e. if the image is sideways after physical rotation), then it is necessary to make the changes in software. The following paragraphs describe this process.

All of the options needed to change these settings will be located in the "Display Settings" dialog box which can be accessed most easily by right clicking anywhere on the desktop and clicking on "Properties."



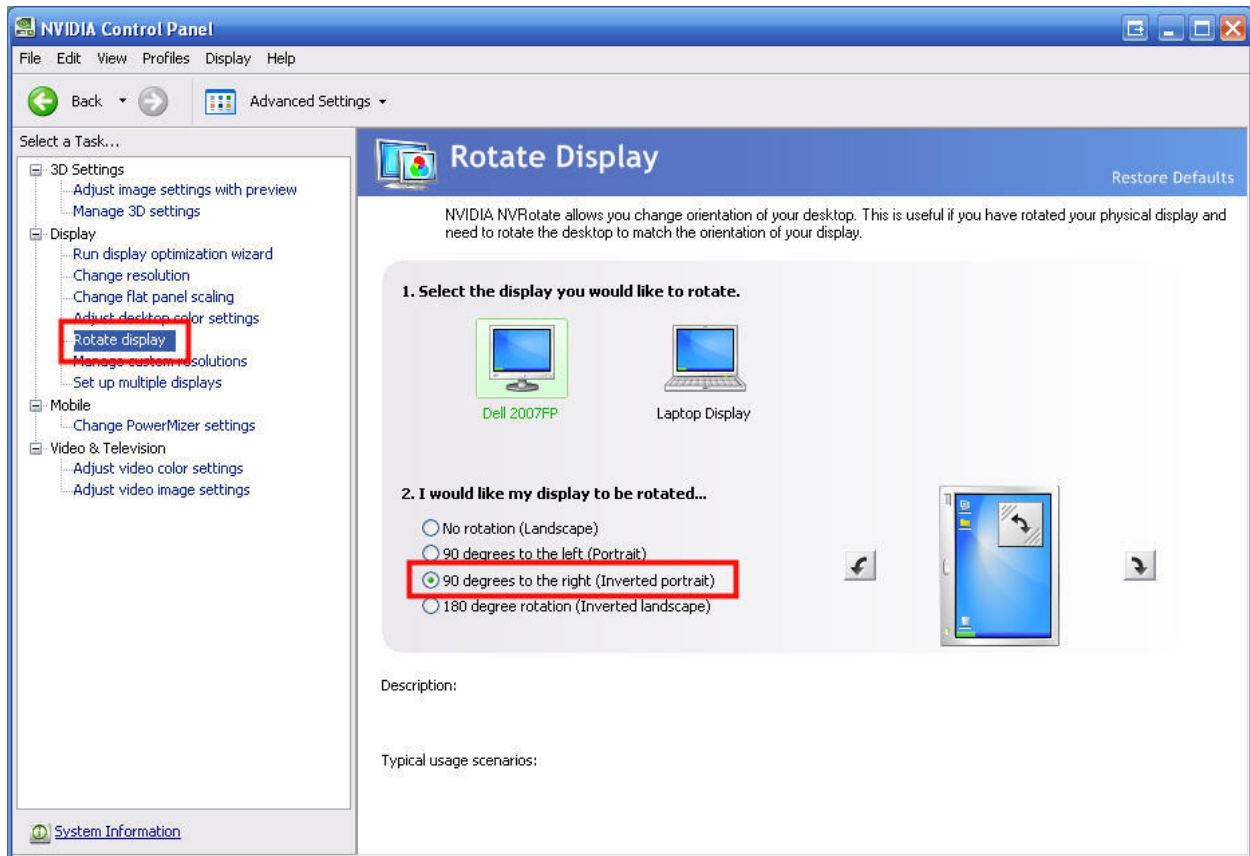
Once the "Display Properties" dialog box shows up, click on the "Settings" tab. This box allows you to set up the monitors however you like. You can drag the boxes labeled "1" and "2" wherever you want them to be in relation to each other. This box also gives you the option to set one of the monitors as primary, change each monitor's resolution independently, and choose which monitors contain the Windows desktop. At this point it is recommended to set the monitor on the right as the primary.



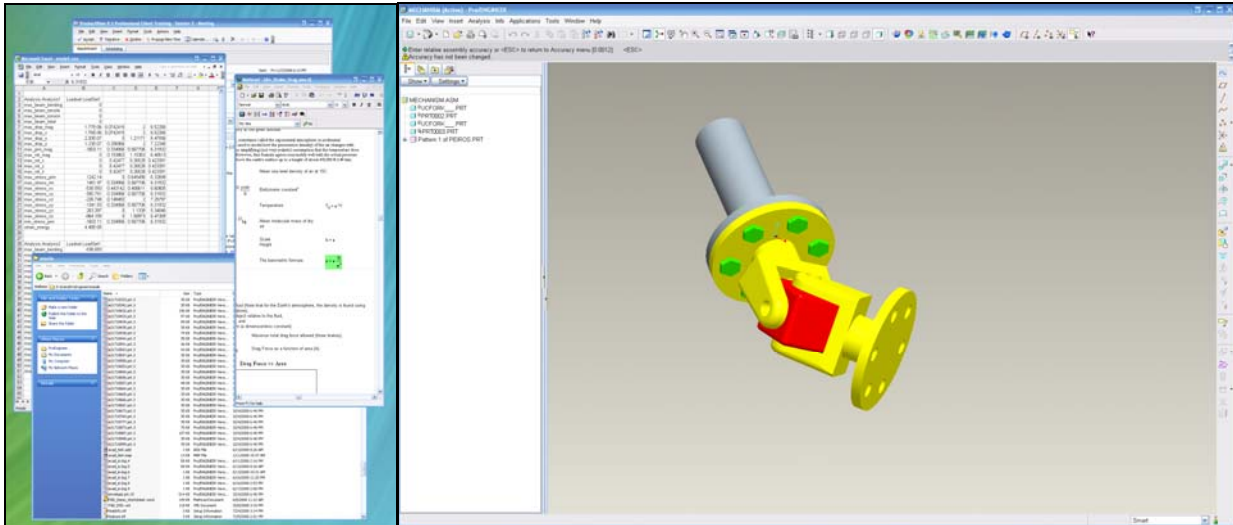
Clicking on the “Advanced” button will bring up a new dialogue box that will give you a few more options. Depending on your video card you’ll have another tab that contains even more advanced features. My machine contains an nVidia card, so I can access these advanced features by clicking on the “Quadro FX 360M” tab and then on the “Start the NVIDIA Control Panel” button.



Now that I have the NVIDIA Control Panel open, I will click on “Rotate Display” in the left hand task box and it provides me with the following view:



Here you can see that I have a laptop connected to an external monitor. Clicking on the external monitor icon then allows me to choose to rotate 90 degrees to the right (Inverted portrait). This will change my display in the software, and now all I have to do is physically rotate my display clockwise. The screenshot below shows my two monitors next to each other. The primary monitor is on the right, and the secondary is on the left. This is helpful because you can open up Excel, Mathcad, Windows Explorer, etc. in the left monitor and keep that open in case you need to get information off of it. Because the secondary monitor is rotated 90 degrees, it allows you to view long documents more easily. Also, it allows other programs to pop-up in front of your Pro/ENGINEER window temporarily until you decide to close them or move them off to the other monitor. This is helpful so that you don't miss a meeting reminder or something of that nature.



You may also reverse the monitors by setting the secondary monitor to the left of the primary monitor. This setup can help a lot with Pro/ENGINEER window management if you happen to find yourself using the menu manager a lot. Simply move the menu manager off to the left of the screen and you can recapture that real estate.

Finally, it is worthy to note that the options provided by Microsoft Windows would be considered by some as “minimal.” You may utilize options from your video card distributor if the standard windows options are not rich enough for your needs. For example, nVidia provides nView with all of its video cards. nView is a multi-display feature that is seamlessly integrated into Windows. The ATI equivalent of this product is called HydraVision.

Finally, there are programs available that will give you even more control over your display settings. One of these programs is called UltraMon and it is quite good at multi-monitor configuration. However, the process described above is simple and free.

[Back To Top](#)

## **Tips of the Month**

### **Adding Your Company Logo to a Windchill Business Report**

[Click Here To View](#)

[Back To Top](#)

## Announcements

### Educational Resource Library

Learn things you always wanted to do - but didn't know you could.

This one stop educational resource library will help you learn more about PTC Solutions and provide you with technical materials developed by the product experts to help you become more productive.

Get tutorials, how-to videos and expert advice for:

- Pro/ENGINEER
  - Conceptual and Industrial Design
  - Detailed Design
  - Simulation/Analysis
  - Production
  - Design Collaboration
- Windchill PDMLink
- Windchill ProjectLink
- Pro/INTRALINK
- PTC Online Tools

Check out the [Educational Resource Library](#) today.

### PTC Tips & Techniques Newsletter Archives

Miss an issue! Can't find that awesome technique you read about? Fear not, you can click on the link below and go through our Customer PTC E-Newsletter archives.

[Click Here To Access](#)

It's better than finding the Ark of the Covenant!

### PTC Tips & Techniques Webcasts: Work Smarter. Not Harder.

Click below to see regularly scheduled Tips & Techniques technical Webcasts that are designed to provide you with the most popular time-saving tricks that Pro/ENGINEER users of all skill levels will find useful. Get more out of your maintenance dollars!

[Tips & Techniques: Work Smarter Not Harder!](#)

---

### **E-PROFILES IS HERE!!**

We have been eagerly anticipating the debut of the new electronic version of Profiles Magazine and now it is here! This new web site will supplement the print edition of the magazine and will

provide new useful features not feasible with paper media. e-Profiles will provide you with 24x7, worldwide access to key information previously available exclusively in the print version. "Tips & Tricks," a popular feature pioneered by Pro/USER, has also moved to the web and will be expanded as the site matures.

Please take a few minutes to check out this new web site. We don't think you will be disappointed.

<http://profilesmagazine.com/>

---

---

[Back To Top](#)

## Upcoming Events & Training Class Schedules

Upcoming, 2008/2009      Your local Pro/Engineer User Groups  
<http://www.ptcuser.org/rugs/>

June 7 – 10, 2009      Orlando, FL USA  
PTC/USER World Event  
<http://www.ptcuser.org/>

### Events

Our seminars and conferences seek to provide you with relevant information regarding product development trends in your industry as well as innovative software learning experiences. Think of them as a constructive day off where you can share experiences and swap ideas with your peers.

If you can't manage to get away, we'll bring it to you. Check back often for regularly scheduled live webcast events.

[You're Invited to Attend...](#)

Please visit the [PTC Education Services](#) website for the latest training information including course descriptions, schedules, locations, and pricing.

- Attend a course at any PTC Center and receive a **free** copy of Pro/ENGINEER Wildfire Student Edition!

<http://www.ptc.com/services/edserv/index.htm>

### Live Instructor-Lead Virtual PTC Training Courses

Virtual Classrooms provide interactive learning with a trained PTC instructor in convenient and manageable sessions that last approximately 4 hours over a series of days. It's easy to join a class right from your desk using a phone or voice-over IP technology.

Sessions are performed just like a traditional ILT (including interactive exercises where you and the instructor can work on lab exercises together) and feature some of our most popular ILT courses. These sessions cover the exact same material as the traditional ILT in-center courses. Also look for some of our most frequently requested mini-topics delivered in the same format that are only an hour - two hours in duration.

If you have any questions about these sessions or would like to see getting other courses, not on this list, on the schedule please feel free to contact me for more details. They are a great way to bring training to you without you having to worry about location or being out from work for long stretches.

You can register for these sessions just as you would for any normal ILT class either by:

1. calling order admin at <http://www.ptc.com/services/edserv/training/registra.htm> or
2. you can go to PTC University directly at <http://www.ptc.com/learning> and submit a registration request directly. All you have to do is search the catalog by typing in “virtual” in the search field and you will see a listing.

## PTC

**Note:** This PTC E-Newsletter will continue to be used for the following:

- 1) Inform you on events related to PTC products (user groups, conferences, training schedules, etc.)
- 2) Educate you on solutions that are available at PTC
- 3) Tips & Techniques using PTC Products

**Note:** These messages are compiled in the local PTC office and will be distributed via e-mail.

[Back To Top](#)