



**PTC Product Focus:** [Progressive Die Extension \(PDX\)](#)

**Tips of the Week:**     **A)** [Imported Data w/ Downstream Applications](#)  
                                  **B)** [PDMLink : Adding New Attributes To A Part](#)

**Announcements:** [Most Recent Announcements](#)

**Upcoming Events & Training Schedule:** [Events & Training Schedule](#)

## PTC Product Focus

### Progressive Die Extension (PDX)

[Click Here To View](#)

[Back To Top](#)

## Tips of the Week

### Imported Data w/ Downstream Applications

[Click Here To View](#)

[Back To Top](#)

## Tips of the Week

### PDMLink : Adding New Attributes to a Part

One of the most significant contributions of Windchill PDMLink is the ability to add attributes to the Out-of-the-box (OOTB) objects “on the fly”. This will virtually eliminate the need to have to resort to UML modeling and Info Modeler capabilities “just to add” custom attributes. Via the Type and Attribute managers, the administrators can quickly add customer specific attributes. The Soft Typing capabilities of Windchill PDMLink will allow you to:

- Add Attributes to the following OOTB business objects
  - Problem Report
  - Enterprise Change Request
  - Enterprise Change Notice
  - WTPart
  - WTProduct
  - Serialized Part
  - WTDocument
- Add subtypes to WTDocument and attributes to these subtypes.

PDMLink handles the automatic generation of UIs for handling of the soft attributes. Where it makes sense (e.g. for Integer or String), the value can be constrained to a Discrete Set. The following attribute types are supported:

- Boolean
- TimeStamp
- Float
- Integer
- String

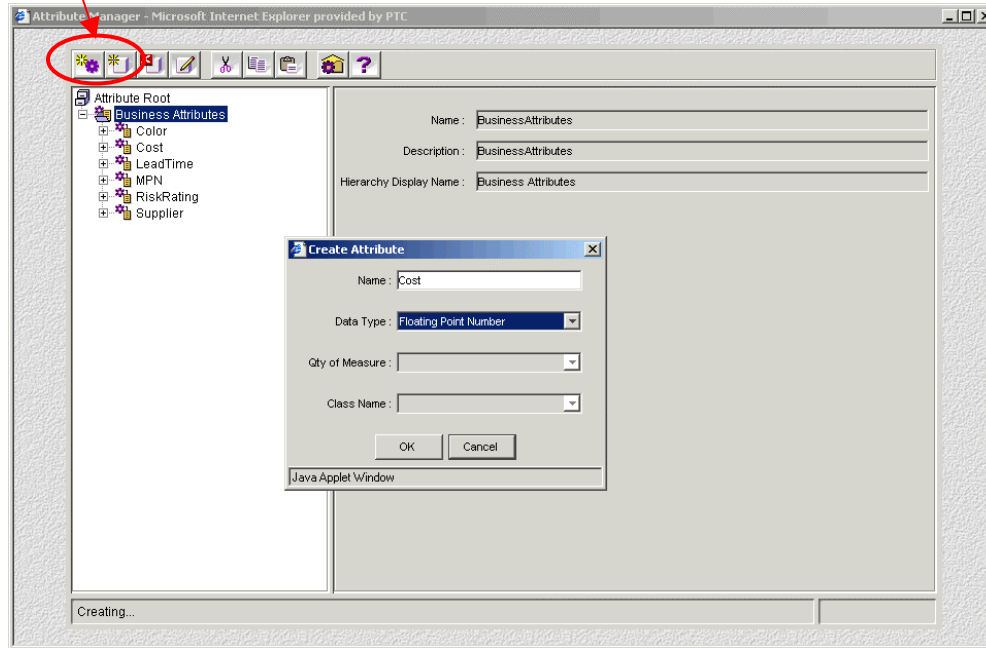
The following steps show how easily a new attribute (Cost) can be added to a Part Object.

### Step 1 - Create “Cost” Attribute

Log into PDMLink as user with administrator privileges. Select the **Administration** tab. This will take you to the Administration page where you can administrate different applications like users, groups, lifecycles, workflows, teams, etc.

- To create a new attribute, click on **Attribute Manager** link. This will take you to the Attribute Definition Manager page.
- Click on the **Attribute Definition Manager** link to define the new attribute.
- Create an Organizer called “Business Attributes”.
- Now create an attribute w/in “Business Attributes” called “Cost” of type “Floating Point Number” (Figure. 1).

#### Create Organizer / Create Attribute





Attribute Manager (Figure. 1)

- After creating the attribute, go back to the PDMLink Administration page.

### Step 2 – Adding “Cost” attribute to a Part

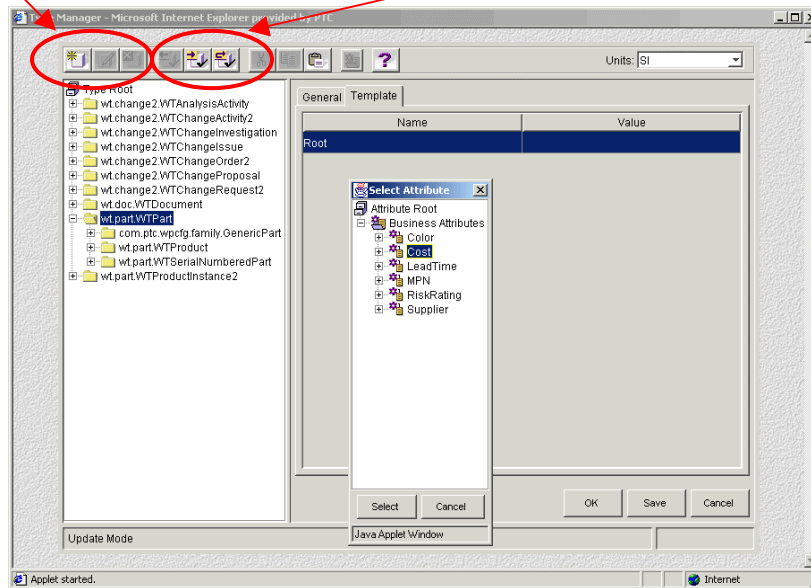
From the PDMLink Administration page, click on the **Type Manager**. Follow the below steps to add an attribute to the Part in Type Manager (Figure. 2).

- Select **wt.part.WTPart** (which denotes PDMLink Part)


- Click **checkout**  icon on the menu bar
- Click the **update**  icon
- Select **Template** Tab
- Select Root, and from the Right-mouse button pull-down, select “**Add Attribute**”
- Drill down to find “Cost” and click Select
- Set a default value for “Cost” – say 0.0
- Click OK, and then checkin wt.part.WTPart

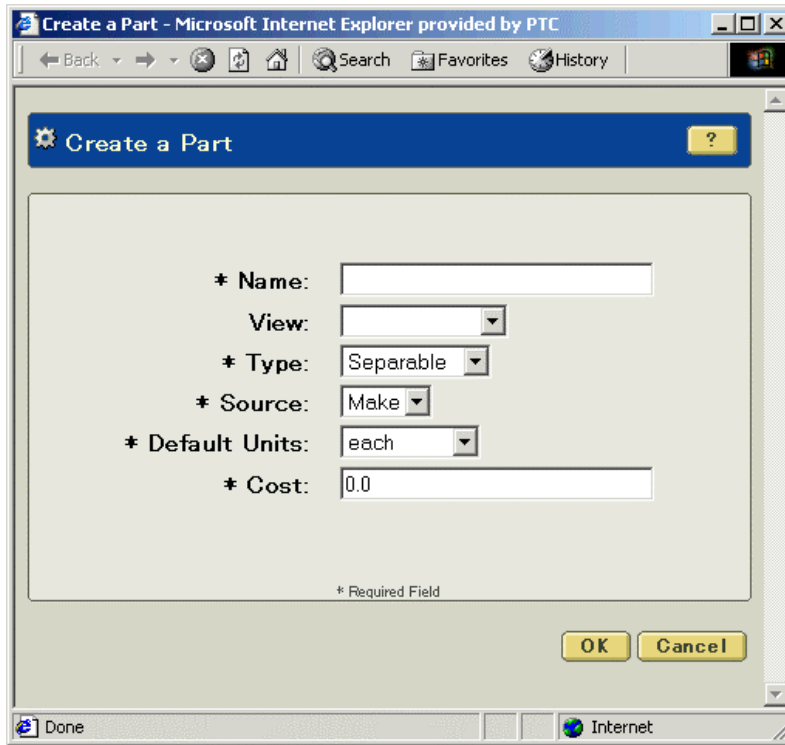
Create/ Update/ Delete

Checkout / Checkin / Undo-Checkout



**Type Manager (Figure. 2)**

This completes adding of an attribute to Part. Now when you go to Create Part UI (Products → and under Actions select  to create), a new field called “Cost” will be available (Figure. 3).



**Create Part UI (Figure. 3)**

[Back To Top](#)



Profiles for our many international readers. Currently, Profiles is printed in English and Japanese.

Please take a few minutes to check out this new web site. We don't think you will be disappointed.

<http://profilesmagazine.com/>

---

---

[Back To Top](#)

## Upcoming Events & Training Class Schedules

Upcoming, 2003      Your local Pro/Engineer User Groups  
<http://www.prouser.org/rugs/>

Upcoming, 2003      Pro/USER International Conference  
<http://www.prouser.org/>

Please visit the [PTC Education Services](#) website for the latest training information including course descriptions, schedules, locations, and pricing.

- Attend a course at any PTC Center and receive a **free** copy of Pro/E 2001 Student Edition!

<http://www.ptc.com/services/edserv/index.htm>

PTC

Note: This PTC E-Newsletter will continue to be used for the following:

- 1) Inform you on events related to PTC products (user groups, conferences, training schedules, etc.)
- 2) Educate you on products that are available at PTC
- 3) Tips & Techniques using PTC Products

Note: These messages are compiled in the local PTC office and will be distributed via e-mail.

[Back To Top](#)