



new!

PTC Product Focus: **A) [Creating a Group in RSD to Help in the Definition of a Hydraulic Manifold](#)**

B) [Enabling Advanced Product Quality Planning APQP in ProjectLink](#)

new!

Tips of the Month: **A) [Selecting Multiple Features for Simultaneous Editing](#)**

B) [Setting User Preferences Improves Adoption](#)

Announcements: [Most Recent Announcements](#)

Upcoming Events & Training Schedule: [Events & Training Schedule](#)

PTC Product Focus

Creating a Group in RSD to Help in the Definition of a Hydraulic Manifold

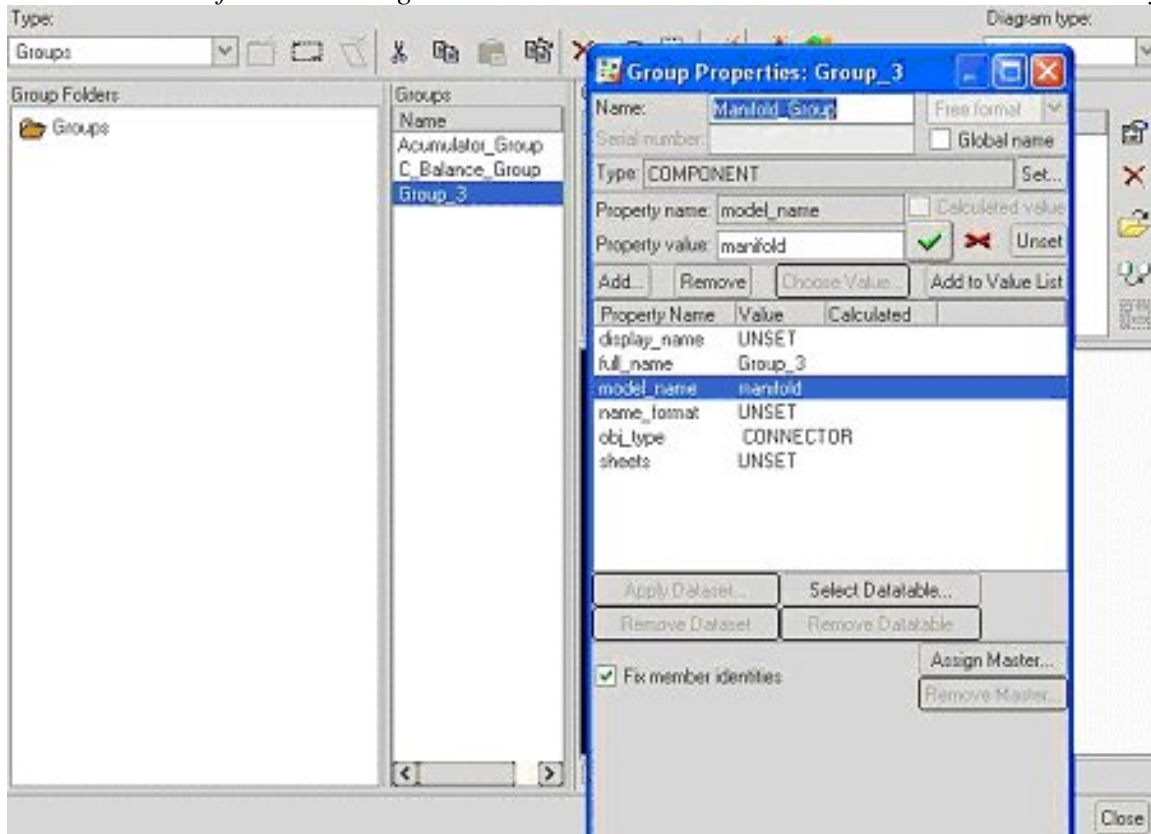
Below is a manifold. It is represented by the symbols and pipes enclosed in the dashed purple boundary. At this point it is an unassociated series of symbols and pipes representing the functionality of the manifold.

Since the manifold is represented by a variety of valves, meters and switches, we will want to group them together in RSD so that they can be treated as a single component which will then be represented by a single Pro/E part (for example manifold.prt).

We first create a group called **Manifold_Group** and then associate all the symbols and pipe lines to that group. They will become members of that **Manifold_Group**.

Next **RMB** on the new group and select **Properties**. Change the name of the group, at the top, to **Manifold_Group** and the **model name** parameter, down below, to the Pro/E part you want to be represented by the group (for example manifold.prt).

This is how the information we generate here in RSD makes a connection to a 3D assembly.

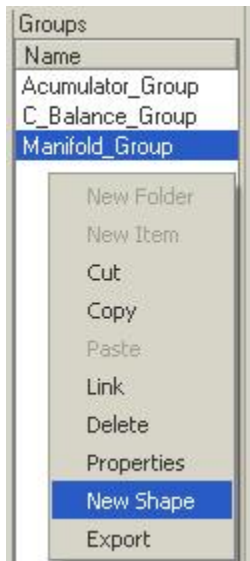


Select **OK** to finish the group's creation.

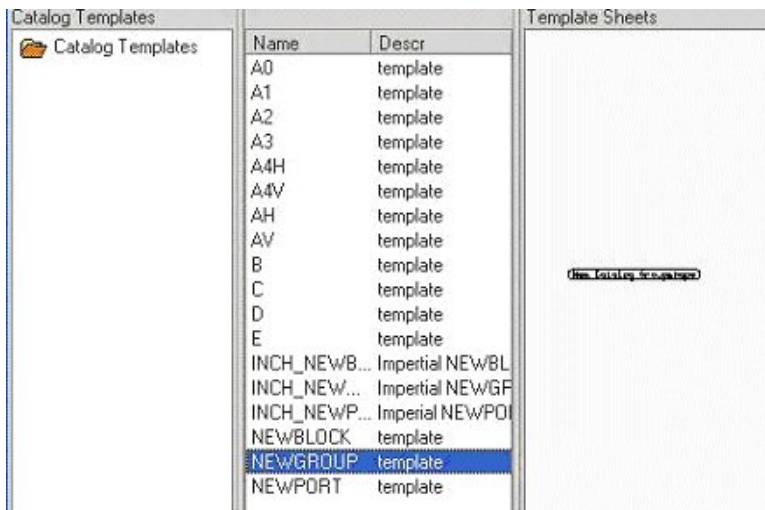
Add Geometry to the Group


RMB on **Manifold_Group** and select **New Shape**.


We now need to create some geometry (temporary) to represent this group




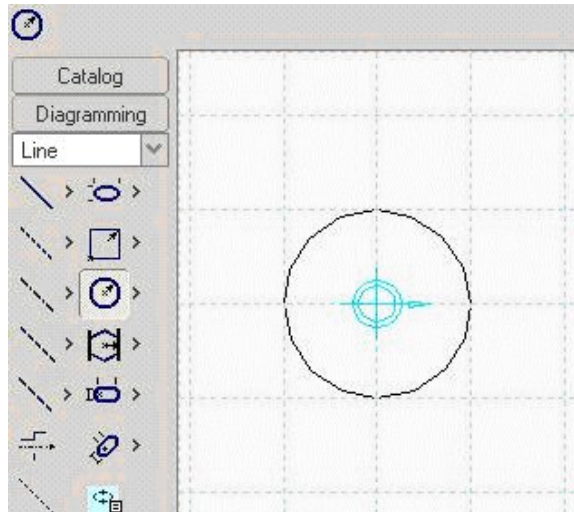
Select the **NEWGROUP** template from the list.



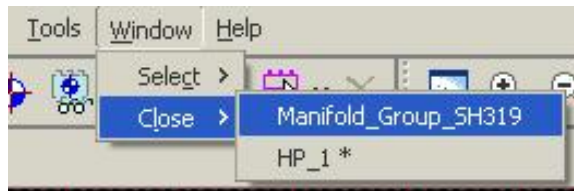
Select the **Open Shape** icon on the right  and pick **Close** in the bottom right corner of the window. This closes the catalog template window so you can access the opened shape. There are a variety of templates we can access to create anything we need for our design.

Select **Line** tool from the pulldown on the left of the screen. Select the Create Circles icon 

and create a circle at the center of the component datum. With the grid turned on  drag the diameter to a size of at least 2 grid squares.






Select **Window/Close** and select the **Manifold_Group** to close its window.

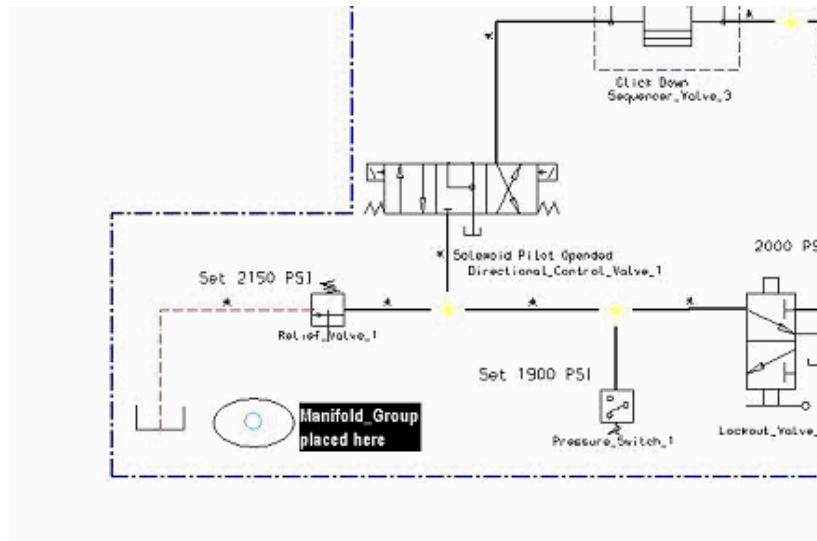


Now, that we have some geometry to represent our group, from a visibility standpoint, let's close the group creation window.

Placing the Group

Open the Catalog Explorer  select the **place new group** icon  and place the **Manifold-Group** instance somewhere inside the purple dashed boundary of the manifold on the diagram. It automatically attaches to our mouse and we simply place it where needed. We can continue placing additional copies of the group or just exit.


RMB/Exit Tool then close the catalog explorer 

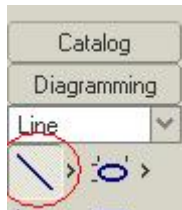


We now need to create some additional geometry in the group and add the existing symbols and pipelines to it.

Open the Group for Editing

If the group geometry (circle) is not highlighted (in red) select it to make sure it is selected.

Pick the Open Shape icon  from the **Diagramming** tool tray. Now any geometry created will be added to the **Manifold_Group** group. Select the Line tool tray and select the **Create Solid Line** icon



First we open up the group to add additional boundary geometry to the circle we first created. This becomes part of our group's definition.

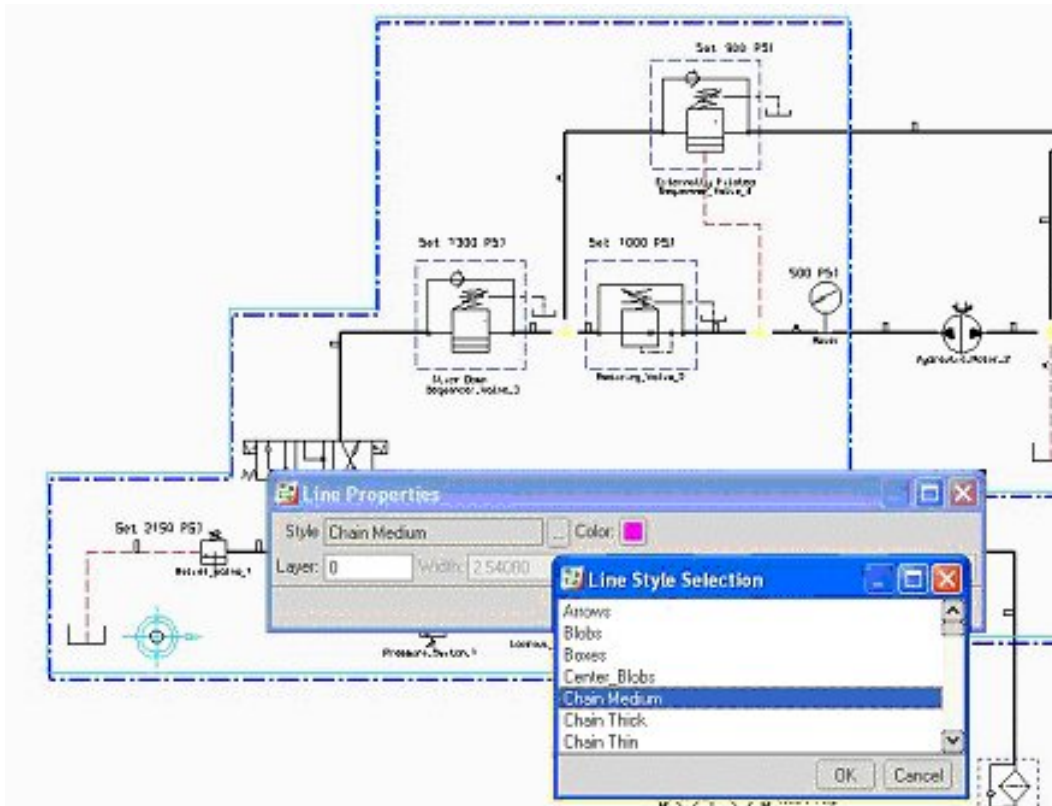
Sketch the Groups Boundary

We will create this boundary around the manifold symbols by sketching it on top of the original.

Sketch on top of the existing (purple dashed line) manifold boundary box. You will be creating a series of connected lines. **RMB/Exit Tool** when finished.


Modifying the Boundary Properties

Select the newly created line **RMB/Properties** and modify the line font to **Chain Medium** and its color to something different.





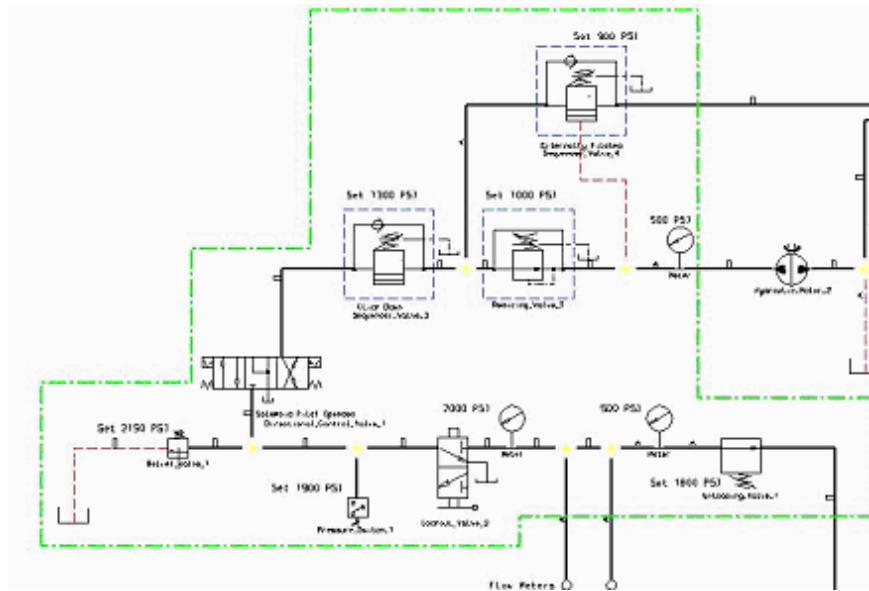
Deleting the Old Boundary

The new boundary is part of our group. We can delete the old one as it is no longer needed.

Select the Close Shape icon  from the Diagramming tool tray. Pick the previous boundary **RMB/Delete**.

Deleting the Temporary Circle Geometry

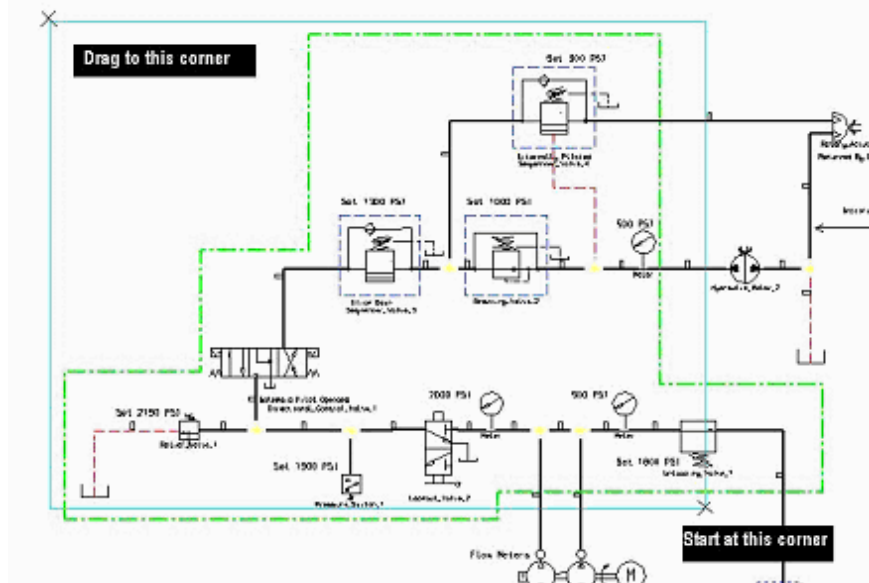
Select the group by picking the circle or the boundary, Both the circle and the newly created boundary should highlight, Select the Open Shape  icon then select the circle. **RMB/Delete** and then the Close Shape icon . Your display should look like the image here, with the circle entity removed.



Selecting Entities to Add to the Group

At this point we will add the desired symbols and pipelines to the *Manifold_Group*. These represent the functions of the manifold. A simple drag box selects all we need.


First drag a box around all the entities inside the new boundary.

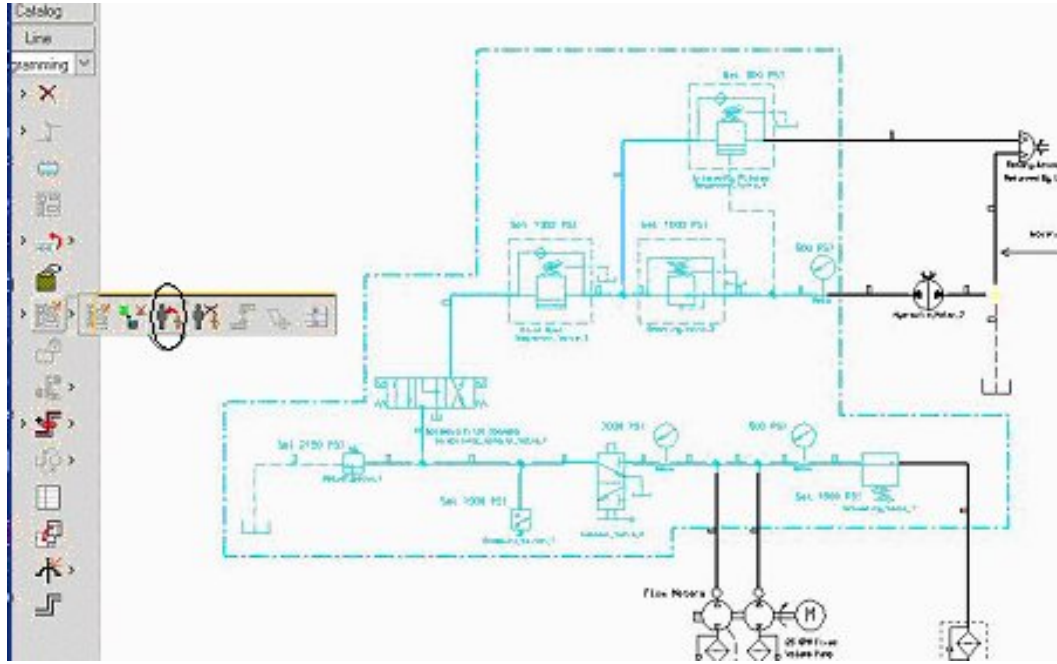


De-selecting Unwanted Entities

Hold the <CTRL> key and select the highlighted pipelines that cross the manifold boundary. This unselects those highlighted pipelines and prevents them from being added to the group. These pipelines will be the hoses we route in Pro/PIPING between the various components and the manifold. They are not part of the manifold.

Adding Symbols to the Group

We will now add the highlighted entities to the group by selecting the Re-Parent icon  from the Diagramming tool tray. Select the group we want to have the selected entities added to by picking the manifold boundary.



To test the group, first clear any highlighted entities by **RMB/Deselect All**. Now select the boundary. Everything inside should highlight along with the boundary itself. **RMB/Deselect All** to clear.

[Back To Top](#)

PTC Product Focus

Enabling Advanced Product Quality Planning APQP in ProjectLink

[Click Here To View](#)

[Back To Top](#)

Tips of the Month

Selecting Multiple Features for Simultaneous Editing

Here is a mapkey “code” that will allow you select multiple features, on a part, at once, (without holding the Ctrl key) and modify them sequentially.

Just cut and paste into your config.pro while in an editor like WordPad or Notepad.

```
mapkey $F7 @MAPKEY_NAME Modify Dimensions on Multiple Features;\n@MAPKEY_LABELModify_Dimensions;#MODIFY;#DIMENSION;
```

[Back To Top](#)

Tips of the Month

Setting User Preferences Improves Adoption

[Click Here To View](#)

[Back To Top](#)

Announcements

Educational Resource Library

Learn things you always wanted to do - but didn't know you could.

This one stop educational resource library will help you learn more about PTC Solutions and provide you with technical materials developed by the product experts to help you become more productive.

Get tutorials, how-to videos and expert advice for:

- Pro/ENGINEER
 - Conceptual and Industrial Design
 - Detailed Design
 - Simulation/Analysis
 - Production
 - Design Collaboration
- Windchill PDMLink
- Windchill ProjectLink
- Pro/INTRALINK

- PTC Online Tools

Check out the [Educational Resource Library](#) today.

PTC Tips & Techniques Newsletter Archives

Miss an issue! Can't find that awesome technique you read about? Fear not, you can click on the link below and go through our Customer PTC E-Newsletter archives.

[Click Here To Access](#)

It's better than finding the Covenant of the Ark!

PTC Tips & Techniques Webcasts: Work Smarter. Not Harder.

Click below to see regularly scheduled Tips & Techniques technical Webcasts that are designed to provide you with the most popular time-saving tricks that Pro/ENGINEER users of all skill levels will find useful. Get more out of your maintenance dollars!

[Tips & Techniques: Work Smarter Not Harder!](#)

E-PROFILES IS HERE!!

We have been eagerly anticipating the debut of the new electronic version of Profiles Magazine and now it is here! This new web site will supplement the print edition of the magazine and will provide new useful features not feasible with paper media. e-Profiles will provide you with 24x7, worldwide access to key information previously available exclusively in the print version. "Tips & Tricks," a popular feature pioneered by Pro/USER, has also moved to the web and will be expanded as the site matures.

Please take a few minutes to check out this new web site. We don't think you will be disappointed.

<http://profilesmagazine.com/>

[Back To Top](#)

Upcoming Events & Training Class Schedules

Upcoming, 2007 Your local Pro/Engineer User Groups
<http://www.ptcuser.org/rugs/>

June 1 – 4, 2008 Long Beach, CA USA
PTC/USER World Event
<http://www.ptcuser.org/>

Events

Our seminars and conferences seek to provide you with relevant information regarding product development trends in your industry as well as innovative software learning experiences. Think of them as a constructive day off where you can share experiences and swap ideas with your peers.

If you can't manage to get away, we'll bring it to you. Check back often for regularly scheduled live webcast events.

[You're Invited to Attend...](#)

Please visit the [PTC Education Services](#) website for the latest training information including course descriptions, schedules, locations, and pricing.

- Attend a course at any PTC Center and receive a **free** copy of Pro/ENGINEER Wildfire Student Edition!

<http://www.ptc.com/services/edserv/index.htm>

Live Instructor-Lead Virtual PTC Training Courses

Virtual Classrooms provide interactive learning with a trained PTC instructor in convenient and manageable sessions that last approximately 4 hours over a series of days. It's easy to join a class right from your desk using a phone or voice-over IP technology.

Sessions are performed just like a traditional ILT (including interactive exercises where you and the instructor can work on lab exercises together) and feature some of our most popular ILT courses. These sessions cover the exact same material as the traditional ILT in-center courses. Also look for some of our most frequently requested mini-topics delivered in the same format that are only an hour - two hours in duration.

If you have any questions about these sessions or would like to see getting other courses, not on this list, on the schedule please feel free to contact me for more details. They are a great way to bring training to you without you having to worry about location or being out from work for long stretches.

You can register for these sessions just as you would for any normal ILT class either by:

1. calling order admin at <http://www.ptc.com/services/edserv/training/registra.htm> or
2. you can go to PTC University directly at <http://www.ptc.com/learning> and submit a registration request directly. All you have to do is search the catalog by typing in “virtual” in the search field and you will see a listing.

PTC

Note: This PTC E-Newsletter will continue to be used for the following:

- 1) Inform you on events related to PTC products (user groups, conferences, training schedules, etc.)
- 2) Educate you on solutions that are available at PTC
- 3) Tips & Techniques using PTC Products

Note: These messages are compiled in the local PTC office and will be distributed via e-mail.

[Back To Top](#)