



## PTC Weekly Email – Beaverton, OR Friday October 19, 2001

---

### Topics:

- *PTC Product Focus: Behavioral Modeling Extension (BMX)*
  - *This Week's Technical Tip: Icons and Flyouts in Pro/ENGINEER*
  - *Upcoming Events and Training Class Schedule*
- 

- *PTC Product Focus: Behavioral Modeling Extension (BMX)*
- 

## Behavioral Modeling™

**The Problem** - The way each engineer solves a problem is unique, and engineers don't get enough time to investigate all possible design solutions. Imagine if you could capture how your engineers solve problems and then let the computer automatically investigate all possible alternatives and present you with the optimal design. Imagine the impact of this on your company.

**The Solution** - These were the problems we solved with Behavioral Modeling™, a solution that captures product-intent as a natural part of the engineering process, and then automatically builds virtual prototypes that satisfy multiple objectives. What's more because the problem and solution have been captured electronically in the design, the system can automatically solve future real engineering problems.

**The Technology** - This unique solution is at the heart of PTC's Pro/ENGINEER. It is patent-pending and called Behavioral Modeling. It delivers significant productivity gains to the people who use it and there is nothing else quite like it: so much so that it won awards from [INDUSTRYWEEK](#) and [Computer Graphics World](#). If you want to be inspired to create better designs faster find out more below or ask your PTC representative for a demo today.

## Real World Behavioral Modeling Examples

- [Automate Geometry Creation](#)
- [Design Exploration](#)

- [Automate Measurements](#)
- [Automate Complex Relations](#)
- [Sensitivity Study](#)
- [Optimization/Feasibility Study](#)
- [Motion Animation](#)
- [Motion Envelope](#)
- [Interference Detection](#)
- [User Defined Analysis](#)

---

## Additional Information

- [FAQ](#)
- [Animations](#)
- [Whitepaper: Behavioral Modeling - The Next Generation of MDA](#)
- [Behavioral Modeling Datasheet](#)

- 
- *This Week's Technical Tip:* **Icons and Flyout Menus**
- 

## ***Suggested Technique for Customizing Flyout Toolbar Buttons.***

---

As of release 2001, users have the ability to add customizable flyouts to toolbars in Pro/ENGINEER. These flyouts can be added by dragging and dropping a **New Flyout** icon to any toolbar, then dragging and dropping other icons to the new flyout. It is important to note the following:

- If a flyout was added to the Sketcher Tools toolbar while in Sketcher Mode, then the flyout shall be displayed in Sketcher Mode. When not in Sketcher Mode, the flyout shall not be displayed.
  - If a Sketcher icon was added to a flyout which is in the File toolbar while in Part Mode, then the message: "Button added to Flyout, will be displayed at the appropriate mode." shall be displayed. In Sketcher Mode the added icon shall be displayed in the flyout.
  - If a flyout was added to the Datum toolbar while in Sketcher Mode, then the flyout shall be displayed in Sketcher Mode. When not in Sketcher Mode, the flyout shall not be displayed.
- 

**The following procedure outlines how to add a customized flyout to a Pro/ENGINEER toolbar.**

1. From the main Pro/ENGINEER window, select **Utilities, Customize Screen**. This will bring up the CUSTOMIZE dialog box.

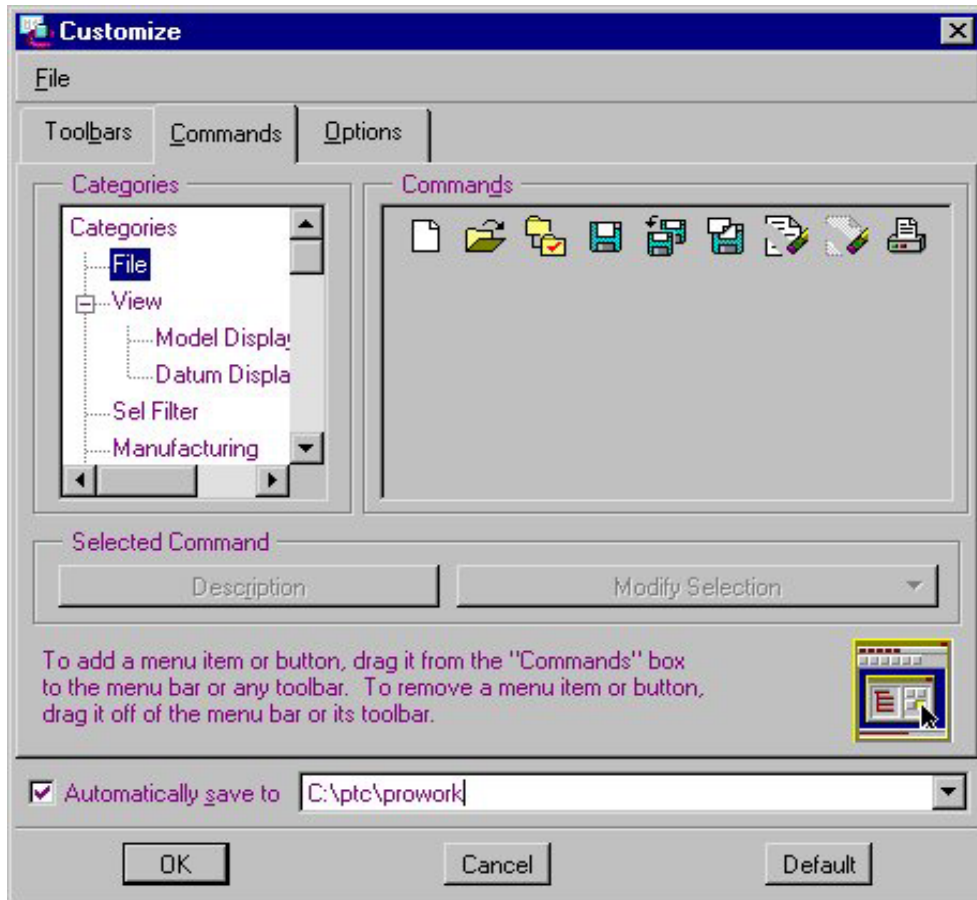


Figure 1

Select the **Commands** tab and scroll down to the bottom of the **Categories** field. Highlight **New Menu** under the **Categories** field. Then, with the Left Mouse Button, drag and drop the **New Flyout** button to a Pro/ENGINEER toolbar, which will result in the following:

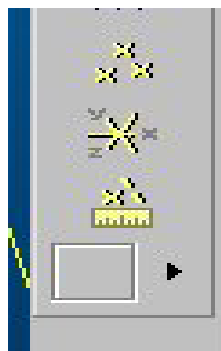


Figure 2

2. Once the new flyout has been added to the toolbar, icons can be added to the flyout. To add an icon to the flyout, select **Utilities, Customize Screen**, which will bring up the CUSTOMIZE dialog box:

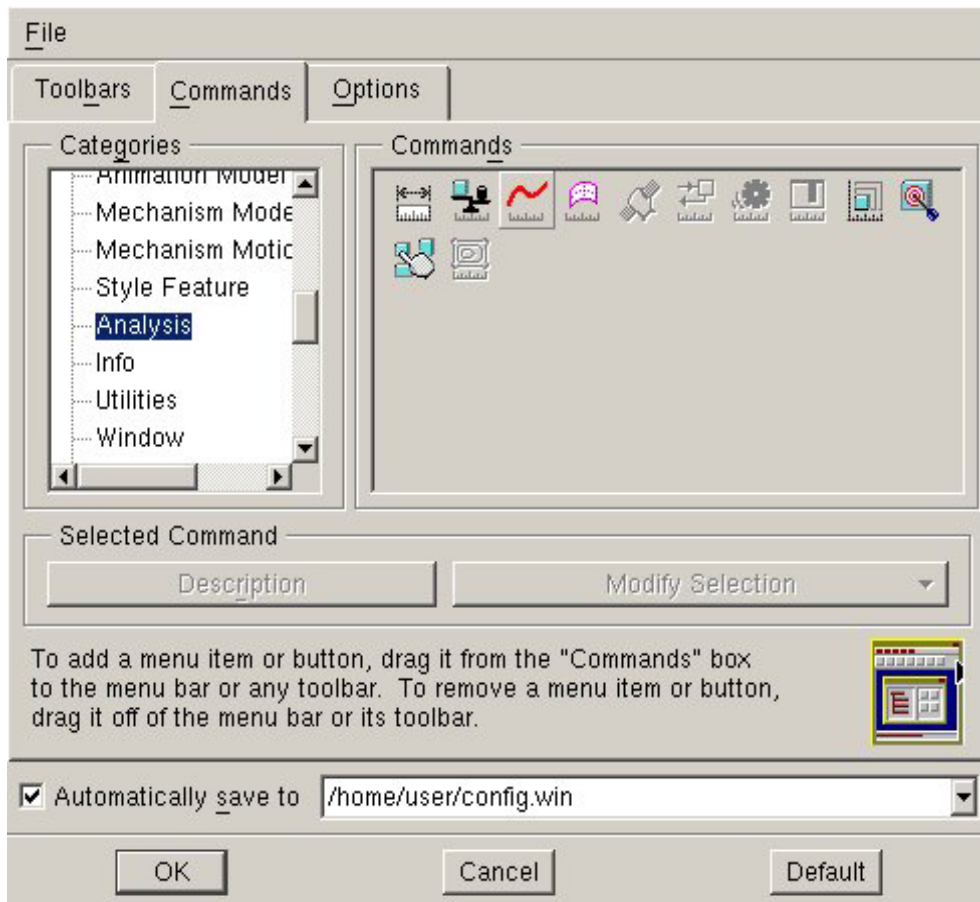


Figure 3

In this case, we are adding Analysis icons to the new flyout. This can be done by using the Left Mouse Button to drag and drop icons from the CUSTOMIZE dialog box onto the new flyout. Multiple icons can be added to the new flyout using the same procedure. Figure 4 shows a new flyout with multiple Analysis icons added to it:

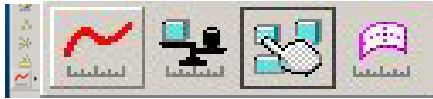


Figure 4

---

The new flyout information will be saved in the config.win file specified in the CUSTOMIZE dialog box.

**The user shall be able to determine the display of the flyout by selecting one of the options (Text, Image, Text & Image from the Right Mouse Button pop-up menu) for the corresponding icon inside the flyout. Additionally, icons can be deleted from a flyout by selecting Delete from the Right Mouse Button pop-up menu for the corresponding icon inside the flyout.**

---

## *Upcoming Events and Training Class Schedules*

---



PTC Weekly Email – Beaverton  
Monday October 19, 2001

Note: This weekly PTC email will continue to be used for the following:

- 1) Inform you on events related to PTC products. (user groups, conferences, training schedules, etc.)
- 2) Educate you on products that are available at PTC
- 3) Tips and Techniques using PTC products

These messages will be distributed via email. If you wish to subscribe, send an email to [smeyers@ptc.com](mailto:smeyers@ptc.com) and type SUBSCRIBE in the subject line. If you wish to be removed from future mailings type REMOVE in the subject line.

**PTC**  
**11000 SW Stratus Street Suite 360**

**Beaverton, OR 97008**  
**Phone: (503) 646-1632**  
**Fax: (503) 626-5122**

----- created by

**Steve Meyers**  
MCAD Application Specialist  
Phone: 503.646.1632  
Email: [smeyers@ptc.com](mailto:smeyers@ptc.com)