



PTC Product Focus: A) [Expert Framework Extension \(EFX\)](#)

B) [PDMLink : Product Structure Baselines](#)

Tips of the Week: A) [Setting Up Inspection Dimensions Using Pro/PROCESS](#)

B) [Creating Product Structure Baselines](#)

Announcements: [Most Recent Announcements](#)

Upcoming Events & Training Schedule: [Events & Training Schedule](#)

PTC Product Focus

Expert Framework Extension (EFX)

[Click Here To View](#)

[Back To Top](#)

PTC Product Focus

PDMLink : Product Structure Baselines

What are product structure baselines?

Product structure baselines capture a snapshot of significant parts within product structures at arbitrary milestones throughout the product and process lifecycle. Because numerous configurations of a product structure will be created over time, these baselines aid in identifying and establishing the product structure configurations of significant interest.

Windchill PDMLink supports managed baselines. Users can create a baseline in the context of a product or a repository. Once a user has created a baseline, they can add parts and documents that reflect the product structure. Business information associated with the parts and documents is also recorded.

In addition, Windchill PDMLink provides integration between the points in a product lifecycle and the lifecycle management tools. Utilizing one interface, users can view the workflows associated to a particular baseline while lifecycle administrators' can edit the workflows from within the lifecycle development tools.

[Back To Top](#)

Tips of the Week

Setting Up Inspection Dimensions Using Pro/PROCESS

[Click Here To View](#)

[Back To Top](#)

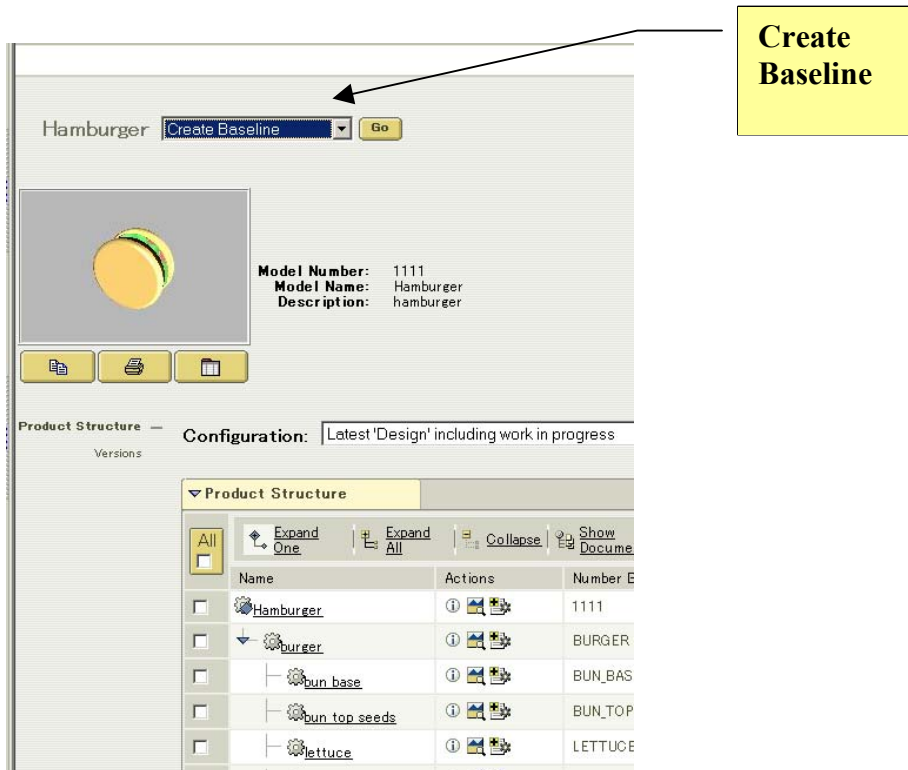
Tips of the Week

Creating Product Structure Baselines

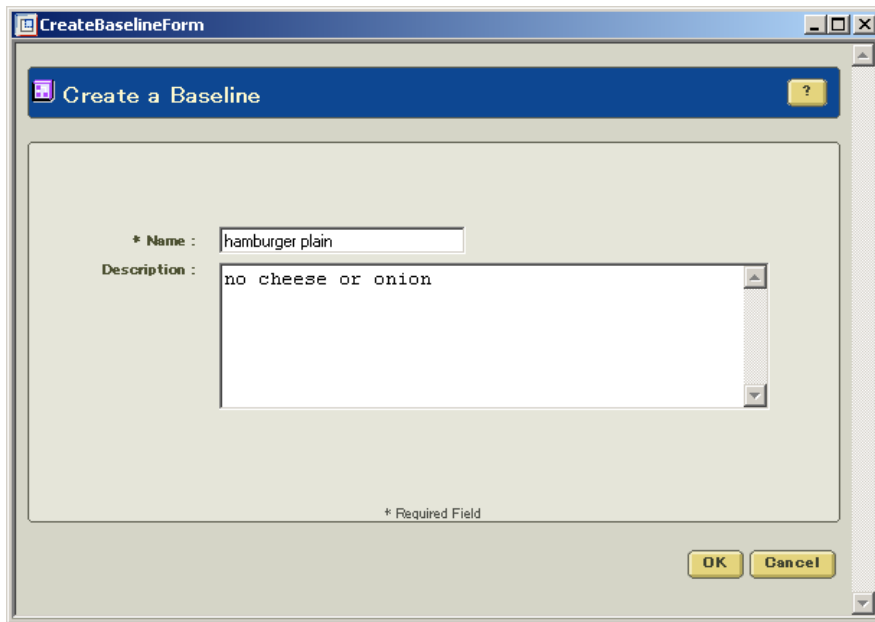
1. CREATING THE BASELINE

The following example illustrates how to create a baseline. In this example, we are using a proe model of a hamburger. Realizing that you would never model a hamburger in the real world, it does serve a good example for using baselines. We will now take a snapshot of the hamburger in its' current state. To create a baseline, select the product called hamburger and issue command **create baseline**.

See below:

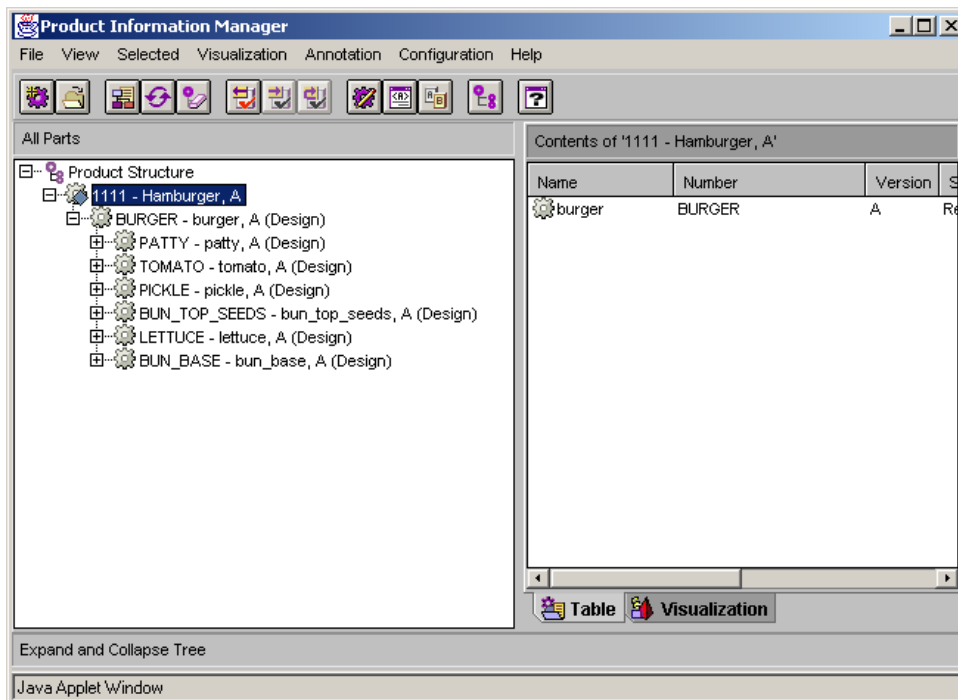


The following dialog box will appear. We will call this baseline **hamburger-plain**.

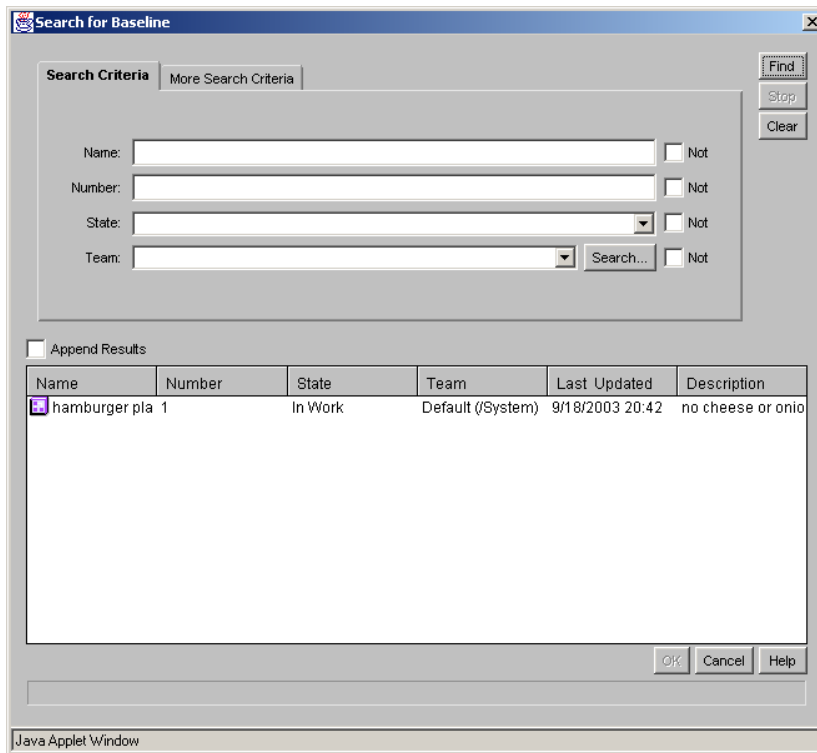


2. POPULATING THE BASELINE

From tools menu in the PDMLink Browser → enter Product Information Manager and open the hamburger product.

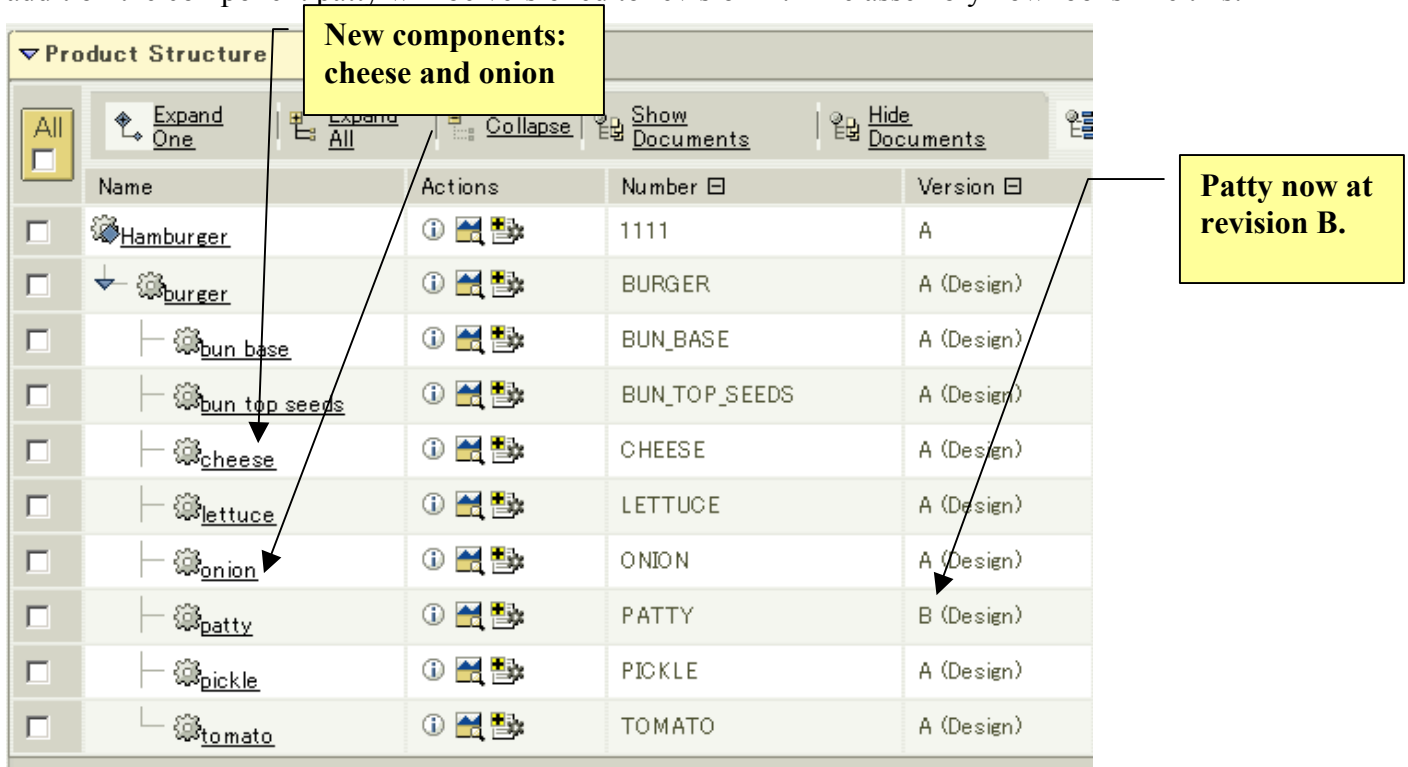


Select the burger assembly (not the product) and under selected → enter Baseline → Populate. Find the baseline called **hamburger-plain**. Select the baseline and enter OK. The baseline will now be populated with the most current assembly information.



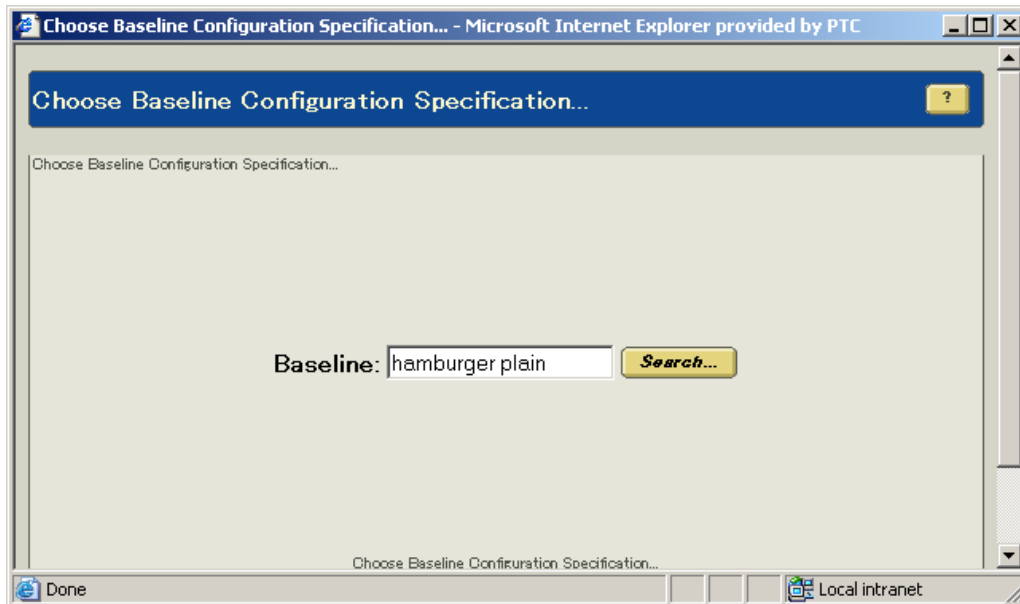
3. CHANGING THE CURRENT HAMBURGER ASSEMBLY

The hamburger will now be modified and the components cheese and onion will be added. In addition the component patty will be versioned to revision B. The assembly now looks like this:



4. VIEWING THE BASELINE

Let's assume we want to go back and look at earlier configuration of the hamburger when the snapshot or baseline was taken. To do this, enter the products page in PDMlink and select the hamburger product. For configuration → select baseline configuration specification. Select the hamburger plain baseline and select OK.

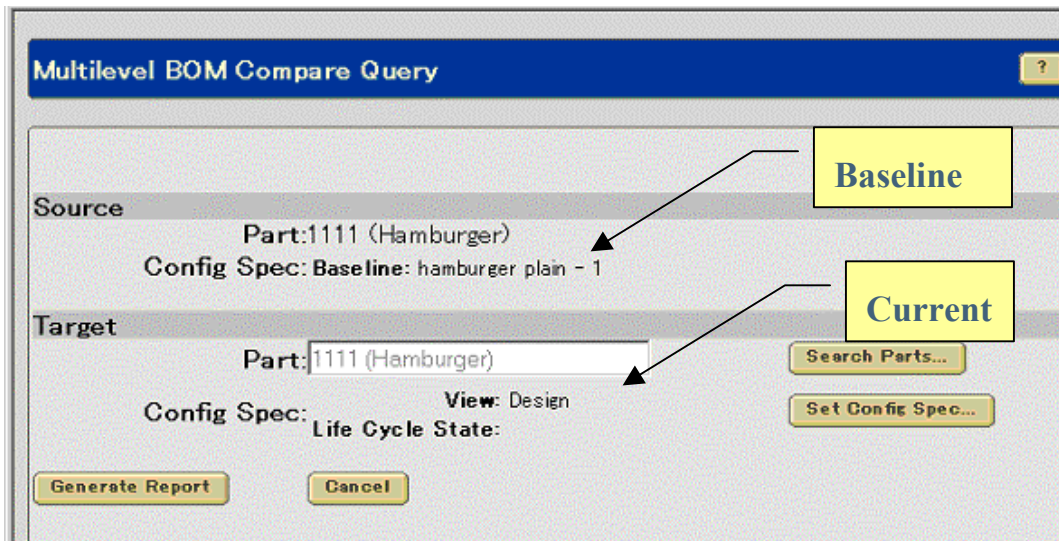


The product configuration will now be displayed when the baseline was taken.

Product Structure				
Name	Actions	Number	Version	
<input type="checkbox"/> Hamburger		1111	A	
<input type="checkbox"/> burger		BURGER	A (Design)	
<input type="checkbox"/> bun base		BUN_BASE	A (Design)	
<input type="checkbox"/> bun top seeds		BUN_TOP_SEEDS	A (Design)	
<input type="checkbox"/> lettuce		LETTUCE	A (Design)	
<input type="checkbox"/> patty		PATTY	A (Design)	
<input type="checkbox"/> pickle		PICKLE	A (Design)	
<input type="checkbox"/> tomato		TOMATO	A (Design)	

5. BOM COMPARE

We can do a comparison of the BOM when the baseline was taken and the current configuration. In the same product page, for related reports → select multilevel BOM compare. Enter the current configuration for the target.



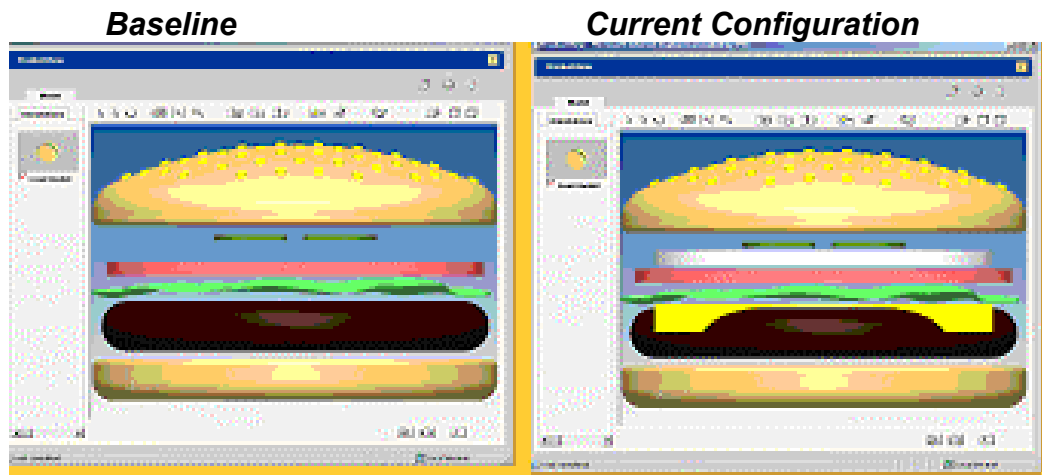
Select Generate Report.

You will see the following the results. Notice the comparison will give you the iteration differences as well.

Source Part: [1111 \(Hamburger\) A2](#)
 Baseline: hamburger plain - 1
 Target Part: [1111 \(Hamburger\) A2](#) [Reset Target](#)
 View: Design
 Life Cycle State:
 Working Included: Yes

Level	Product Structure Differences	Source		Target	
		Version Used	Quantity	Version Used	Quantity
1	BURGER (burger)	A.3 (Design)	1 each	A.5 (Design)	1 each
2	...TOMATO (tomato)	A.2 (Design)	1 each	A.3 (Design)	1 each
2	...CHEESE (cheese)			A.2 (Design)	1 each
2	...LETTUCE (lettuce)	A.2 (Design)	1 each	A.3 (Design)	1 each
2	...BUN TOP SEEDS (bun top seeds)	A.2 (Design)	1 each	A.3 (Design)	1 each
2	...ONION (onion)			A.2 (Design)	1 each
2	...PATTY (patty)	A.2 (Design)	1 each	B.1 (Design)	1 each
2	...BUN BASE (bun base)	A.2 (Design)	1 each	A.3 (Design)	1 each
2	...PICKLE (pickle)	A.2 (Design)	1 each	A.3 (Design)	1 each

6. VISUALIZATION COMPARE



7. SUMMARY

With the baseline functionality embedded in Windchill, you can see how easy it is to retrieve all the information about past product configurations. In addition, you have the ability to compare baselines against each other or with other configurations and generate reports in textual and visual formats.

[Back To Top](#)

Announcements

Special Hardware offers for customers updating to Pro/ENGINEER Wildfire

http://www.ptc.com/partners/hardware/current/wildfire_tlo.htm

<http://www.3dlabs.com/PTC/>

PTC Sponsored Events

Click below to see PTC sponsored events:

<http://www.ptc.com/company/news/events/index.htm>

Thinking About Pro/ENGINEER Wildfire? Check this out.



<http://www.ptc.com/go/engineering/index.htm>

E-PROFILES IS HERE!!

We have been eagerly anticipating the debut of the new electronic version of Profiles Magazine and now it is here! This new web site will supplement the print edition of the magazine and will provide new useful features not feasible with paper media. e-Profiles will provide you with 24x7, worldwide access to key information previously available exclusively in the print version. "Tips & Tricks," a popular feature pioneered by Pro/USER, has also moved to the web and will be expanded as the site matures. Future plans include several foreign-language editions of Profiles for our many international readers. Currently, Profiles is printed in English and Japanese.

Please take a few minutes to check out this new web site. We don't think you will be disappointed.

<http://profilesmagazine.com/>

[Back To Top](#)

Upcoming Events & Training Class Schedules

Upcoming, 2003 Your local Pro/Engineer User Groups
<http://www.prouser.org/rugs/>

June 13 - 16, 2004 Nashville, TN
Pro/USER International Conference
<http://www.prouser.org/>

Please visit the [PTC Education Services](#) website for the latest training information including course descriptions, schedules, locations, and pricing.

- Attend a course at any PTC Center and receive a **free** copy of Pro/E 2001 Student Edition!

<http://www.ptc.com/services/edserv/index.htm>

PTC

Note: This PTC E-Newsletter will continue to be used for the following:

- 1) Inform you on events related to PTC products (user groups, conferences, training schedules, etc.)
- 2) Educate you on products that are available at PTC
- 3) Tips & Techniques using PTC Products

Note: These messages are compiled in the local PTC office and will be distributed via e-mail.

[Back To Top](#)