



new!

PTC Product Focus: [A\) Creating a Symbol in RSD from Imported Geometry](#)

[B\) Architectural Improvements in Pro/IntraLink 8.0](#)

new!

Tips of the Week: [A\) 6 Tips You Can Use Everyday](#)

[B\) Configuring Windchill 7.0 & 8.0 Servers for HTTPS](#)

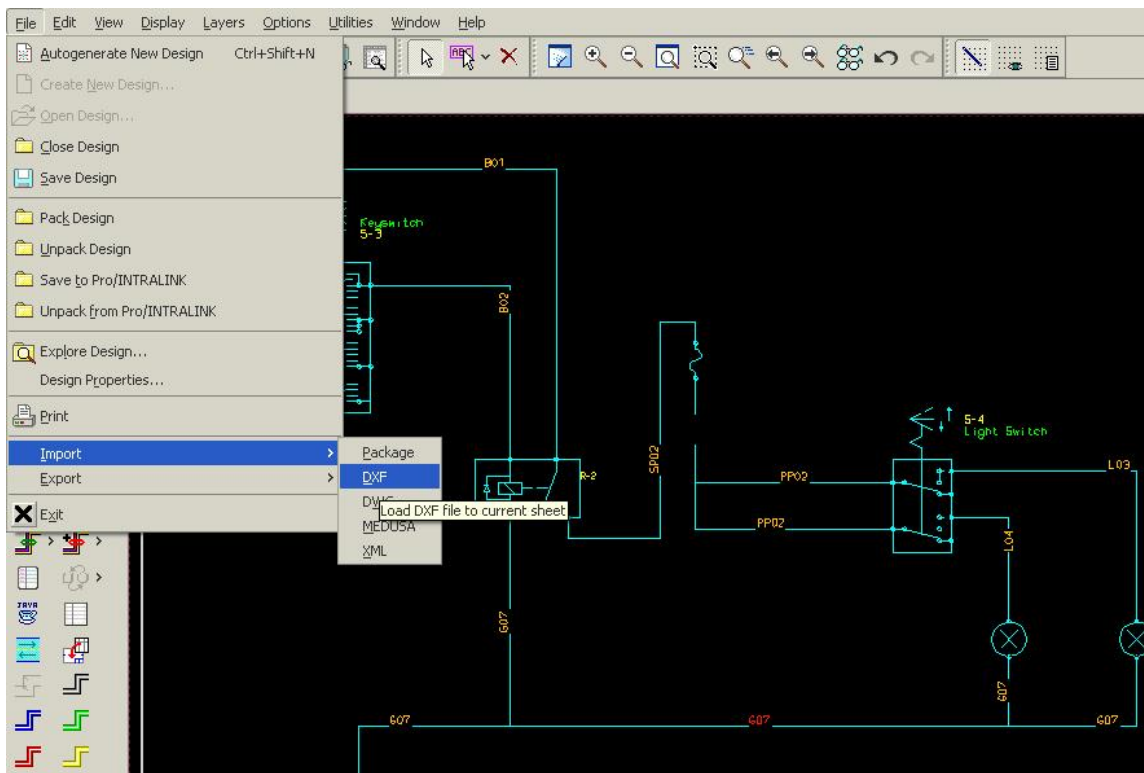
Announcements: [Most Recent Announcements](#)

Upcoming Events & Training Schedule: [Events & Training Schedule](#)

PTC Product Focus

Creating a Symbol in RSD from Imported Geometry

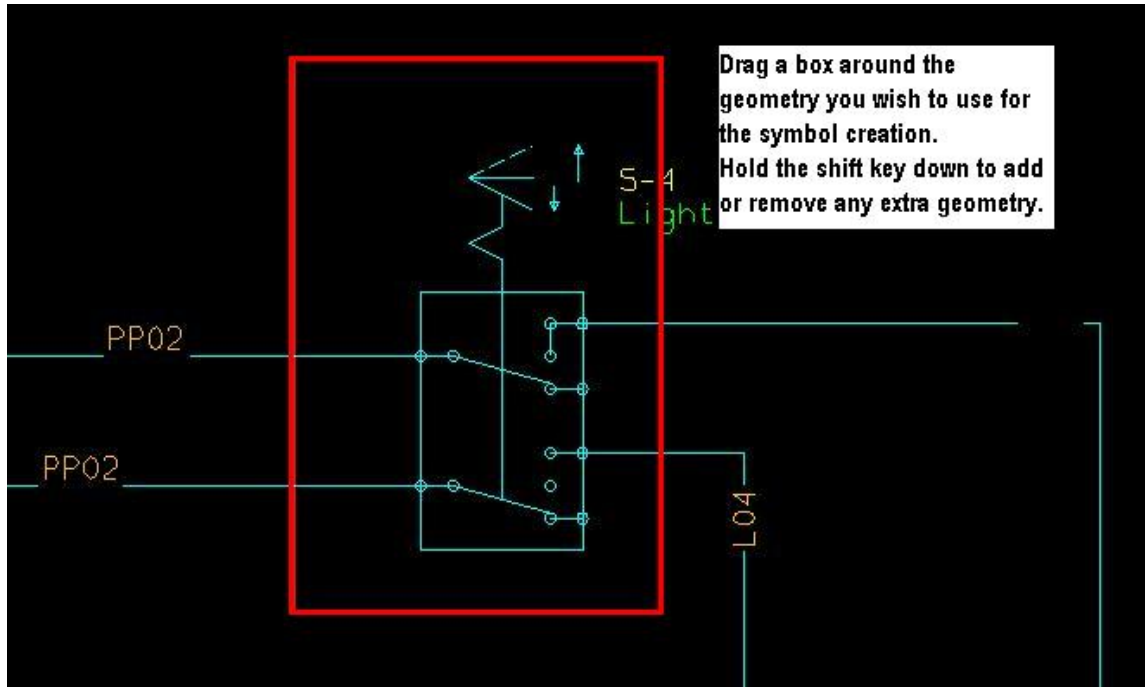
Many times people already have 2D symbols either created in another system or available from an outside source that they would like to use in Routed Systems Designer (RSD). It is a very simple task to bring this information into the RSD application and make it available for everyone. Initially we need to get the information into a format that is compatible with RSD. DXF and DWG formats are best. Once in this format, the RSD application can be started and using **File/Import**, the 2D geometry can be read in.




A previous schematic can be read in or just a page full of the symbols you want to import.

RSD creates a sheet and places the imported data on it.

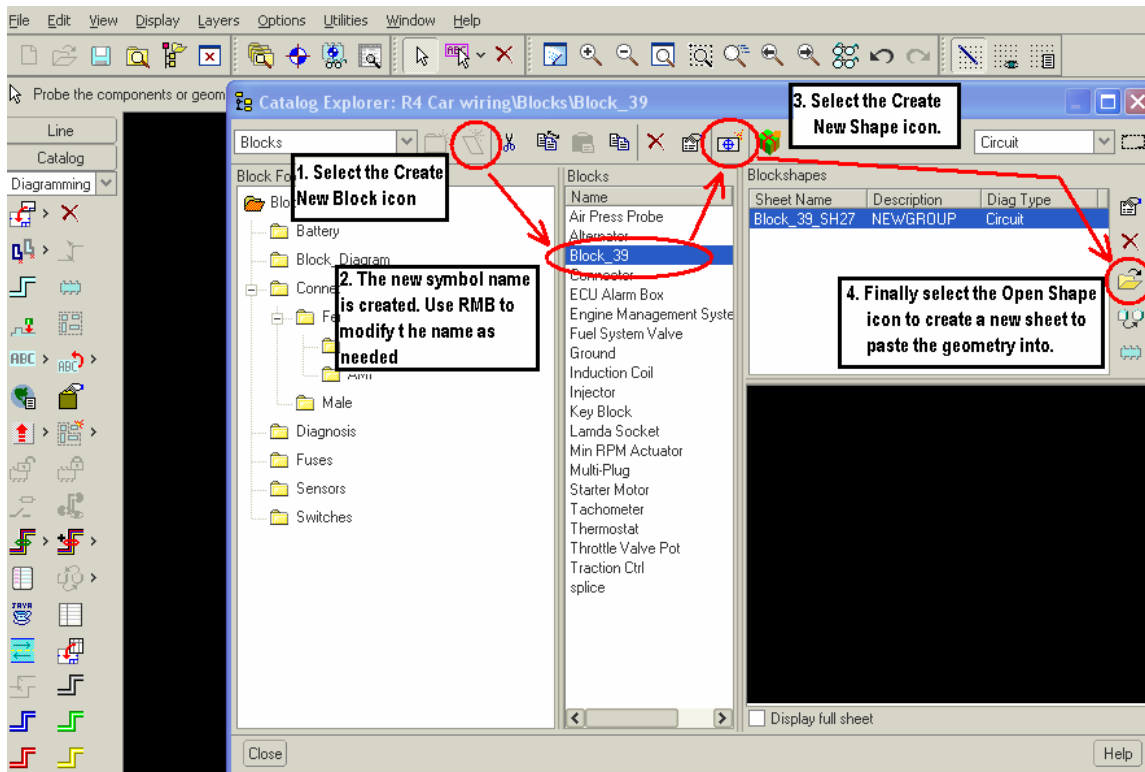
The next step is to select the symbol geometry you want to use. Create one symbol at a time. There are a variety of ways of selecting the needed geometry. You can individually select the geometry line by line or curve by curve or you can simply drag a box around what is wanted. Once selected, the chosen geometry is highlighted in red. Additional geometry may be added or deleted.



We will want to copy this geometry into our new symbol instance. Select **Edit/Copy** from the top pull-down menu. The highlighted geometry is now ready to be pasted into our new instance.

To create the new symbol we need to select the Display Catalog icon. .

Once selected, pick the Create New Shape icon. RSD automatically creates a new symbol name in the listing. You can use your **RMB** and choose **Properties** to rename the symbol as needed. Next select the Create New Shape icon and then the Open Shape icon. This opens up a new, blank sheet. It is on this sheet, the new symbol will be constructed.

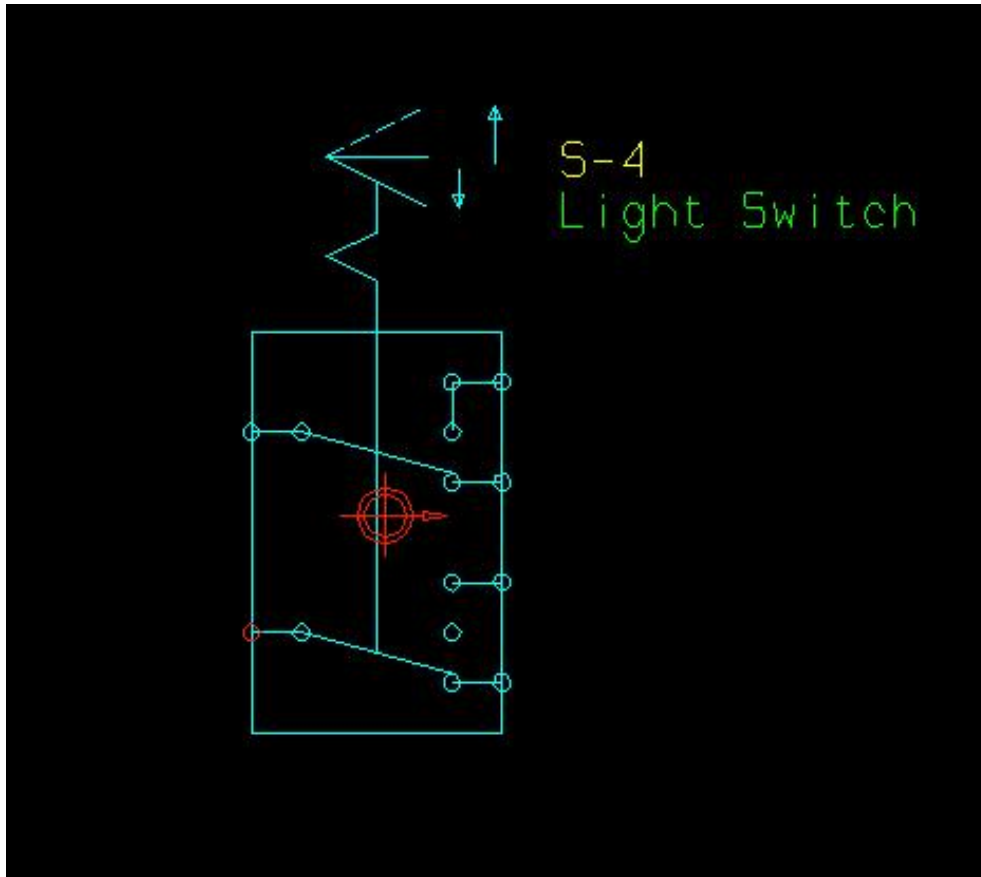


You will notice in the center of the blank sheet, a component datum (an anchor). This is the center or origin of the symbol. When we place our new symbol on a schematic, it will be attached to the mouse at this point. There are tools in RSD to relocate this datum, if that is desired.

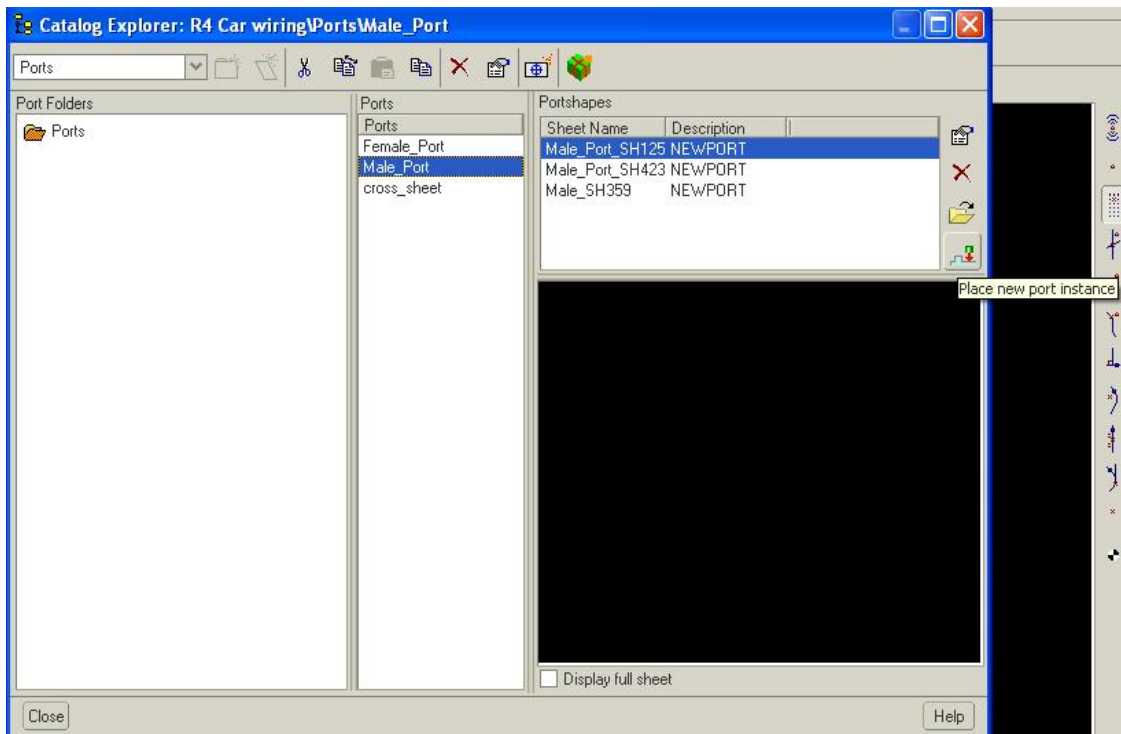
You can also modify the grid and its spacing to suite you needs.



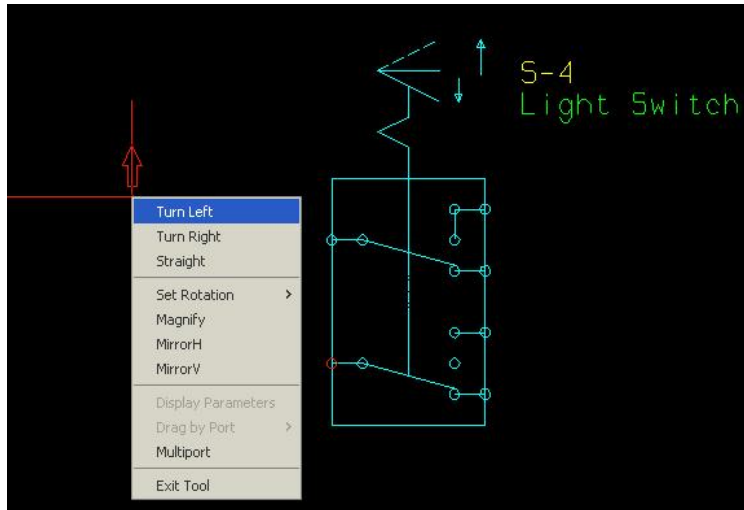
(Hint: use the same grid spacing as you use for schematic creation to avoid any miss alignments)



The final step is to place ports on the symbol so that fibers may be connected. This is akin to nodes in a Pro/Diagram symbol.
 Go back and select the Display Catalog icon and from the pull-down and select ports.

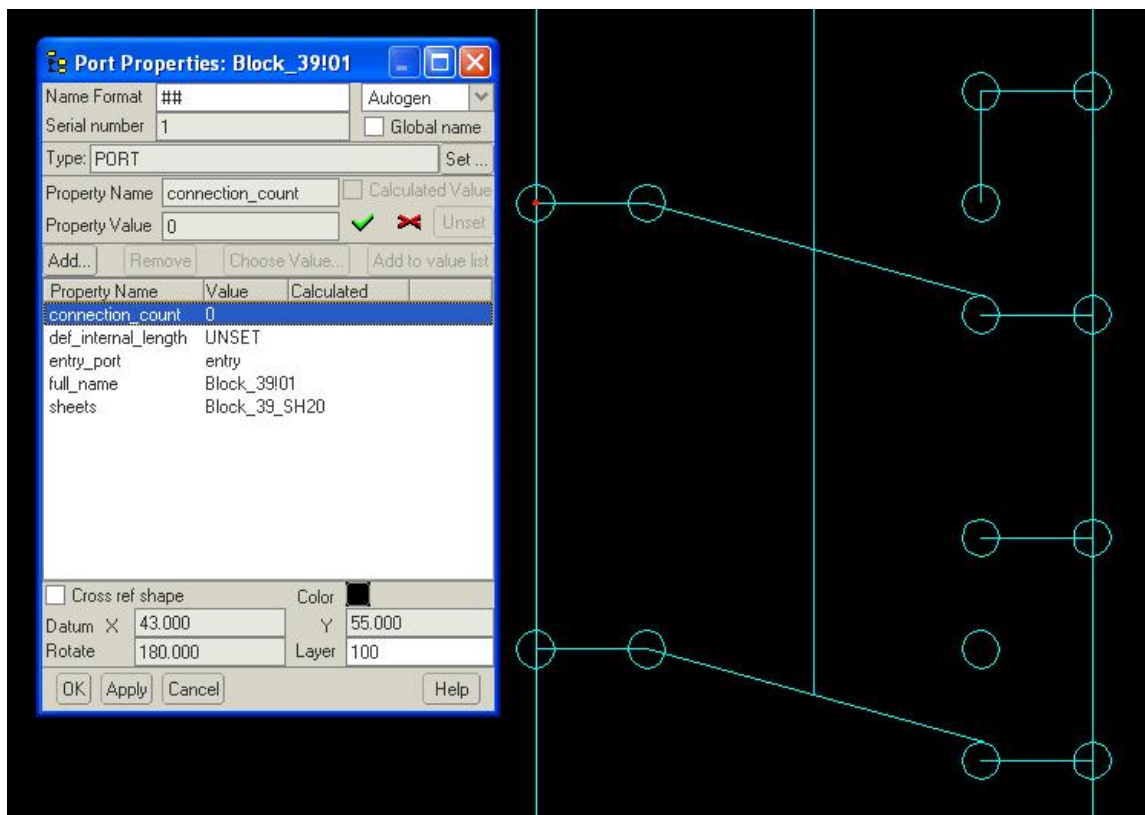


Select the port representation you want from the list. It is placed on the end of your mouse. Notice that there is an arrow associated with the port. You always want the arrow to point away from your symbol. Think of this as the Z axis of the coordinate system for a connector. The wire is routed down the Z axis the same as the fiber is routed down the arrow. You can use **RMB** rotate right or left as need to orient the direction correctly.



Use **Exit Tool** from the **RMB** to stop placing ports.

You can either double-click or **RMB** to modify the properties of the ports as needed.



Close the symbols window when finished.

Your new symbol is now in the library ready for use.

[Back To Top](#)

PTC Product Focus

Architectural Improvements in Pro/INTRALINK 8.0

[Click Here To View](#)

[Back To Top](#)

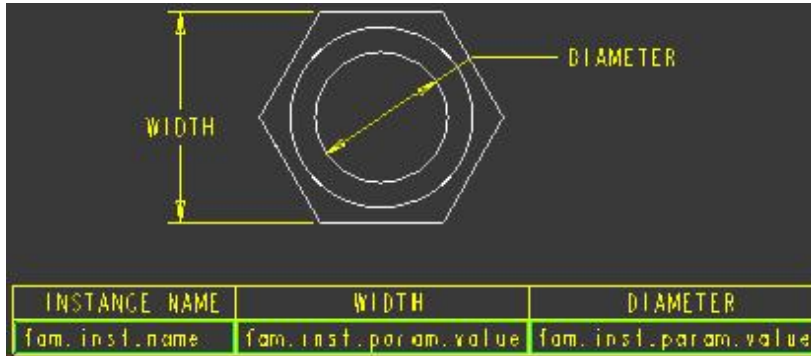
Tips of the Week

6 Tips You Can Use Everyday

Tip #1

Technique for Creating a Table of a Family Table Part Without Using a 2D Repeat Region

Create a simple repeat region in each column. (see below)



Add the following filters for columns 2 & 3

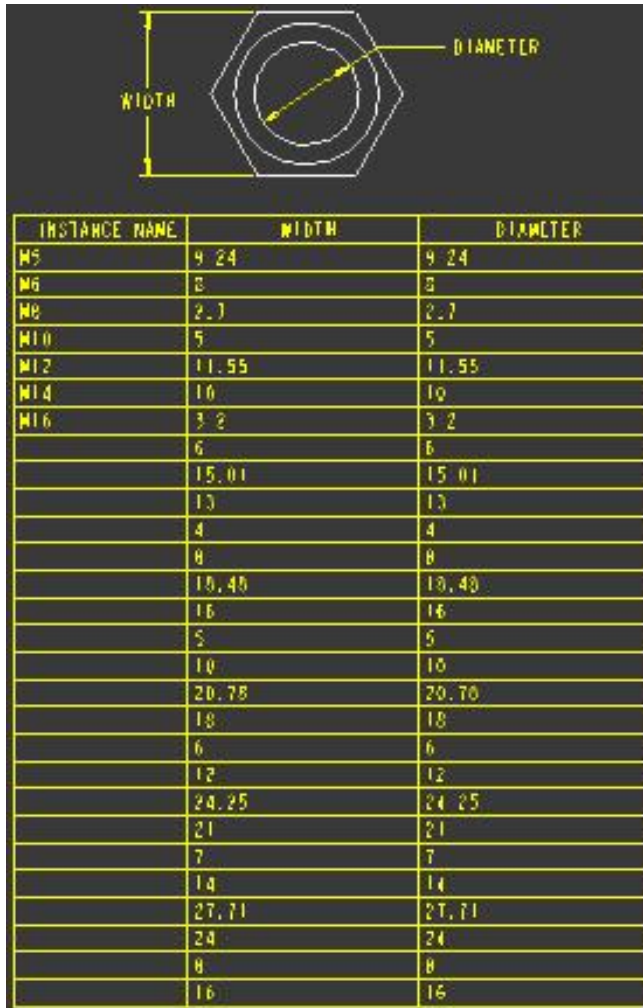
&fam.inst.param.name == WIDTH
&fam.inst.param.name == DIAMETER

The results are below.

The diagram is identical to the one above, showing a hexagonal part with 'WIDTH' and 'DIAMETER' dimensions. Below it is a table with three columns: 'INSTANCE NAME', 'WIDTH', and 'DIAMETER'. The rows contain numerical values for each parameter.

INSTANCE NAME	WIDTH	DIAMETER
N5	8	5
N6	10	6
N8	13	8
N10	16	10
N12	18	12
N14	21	14
N16	24	16

Table w/o filters will fill out like this.



Tip #2

Specification of Units for Parameters

Summary

- ⦿ Units can be specified for user-defined parameters during creation and when using parameters in relations.
- ⦿ Parameter units are recognized and supported by Pro/INTRALINK and PDMLink.

Benefits and Description

- ⦿ Specify parameters as unitless or with units during their creation or when using them in relations. Parameters in relations are scaled correctly based on calculations.

Example: **TOTAL_LENGTH = 1 [in] + 5[mm] would evaluate**
 TOTAL_LENGTH = 30.4[mm]

- ⦿ This scaling dramatically increases the flexibility and power for defining custom units. You can mix units when writing relations without having to convert the

parameter values before using them. Scalar, or unitless parameters, are still supported and can be used with parameters with units in relations.

User Interface Location

☉ Tools / Parameters / Properties

Tip #3

Automatic Drawings

To get a drawing “for free” upon creation of a new part, assembly, or manufacturing model:

Make sure the following config.pro options are set:

```
start_model_dir <full-path-to-templates-folder>
force_new_file_options_dialog yes
rename_drawings_with_object both
```

Create a new part/assembly or retrieve one for use as a start model. Remember to "designate" any parameters that you wish to be prompted for when creating new parts from the start part.

Create a new drawing, using your start model as the default model. (You may create many start drawings, one for each start part.) Apply a format, add views if desired. If prompted for a parameter value, just enter ¶meter_name.

Save the start drawing, and move it and the start model to start_model_dir

When creating a new model using the start model, a new drawing with the same name as the new model will be saved to disk.

Tip #4

Drag ‘n Drop UDF’s From a Web Page

In Pro/E Wildfire 1.0 and up it is possible to drag and drop a user-defined feature (UDF) from an image in a web page:

Create the UDF; save it in a folder

Create an image of the UDF; save it in the same folder

Create a .html file in the same folder containing the following syntax:

```
<a href="my_udf1.gph.1">
</a>
```

(the image information is optional of course)

Add the .html file as a “Favorite” in the Pro/E Navigator

To apply the UDF, drag its image from the Navigator onto a Pro/E model in the graphics window, and place as usual

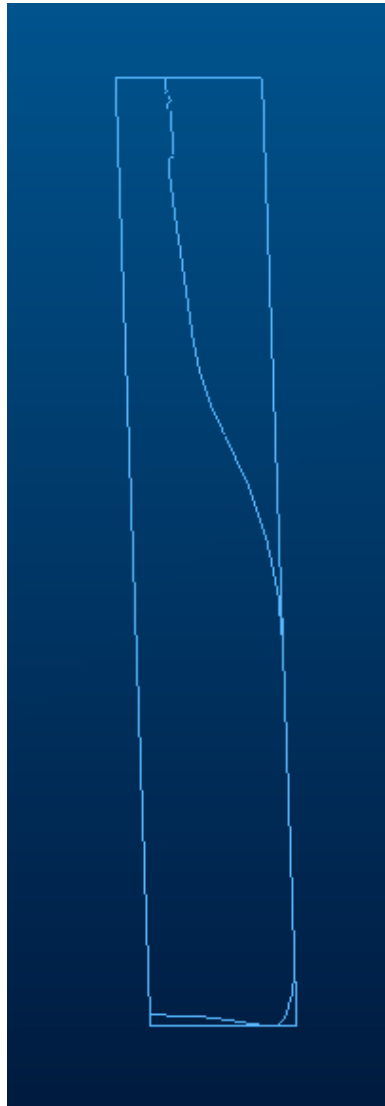
Tip #5

IGES Import

Config.pro option:

intf_in_extract_profiles → all

Turns planar iges curves into sketched curves



You can now pick on the imported curves either on the screen or from the model tree and use edit definition to make any needed modifications.

Tip #6

Always Access Your Working Directory First

Config.pro option

file_open_default_folder →working_directory

- Always opens models from working dir folder

[Back To Top](#)

Tips of the Week

Configuring Windchill 7.0 & 8.0 Servers for HTTPS

[Click Here To View](#)

[Back To Top](#)

Announcements

Educational Resource Library

Learn things you always wanted to do - but didn't know you could.

This one stop educational resource library will help you learn more about PTC Solutions and provide you with technical materials developed by the product experts to help you become more productive.

Get tutorials, how-to videos and expert advice for:

- Pro/ENGINEER
 - Conceptual and Industrial Design
 - Detailed Design
 - Simulation/Analysis
 - Production
 - Design Collaboration
- Windchill PDMLink
- Windchill ProjectLink
- Pro/INTRALINK
- PTC Online Tools

Check out the [Educational Resource Library](#) today.

Live Instructor-Lead Virtual PTC Training Courses

PTC will be offering a series of Virtual Classrooms this quarter for you looking to save money (15% off ILT prices) and cut down on travel.

Virtual Classrooms provide interactive learning with a trained PTC instructor in convenient and manageable sessions that last approximately 4 hours over a series of days. It's easy to join a class right from your desk using a phone or voice-over IP technology.

Sessions are performed just like a traditional ILT (including interactive exercises where you and the instructor can work on lab exercises together) and feature some of our most popular ILT courses. These sessions cover the exact same material as the traditional ILT in-center courses. Also look for some of our most frequently requested mini-topics delivered in the same format that are only an hour - two hours in duration.

If you have any questions about these sessions or would like to see getting other courses, not on this list, on the schedule please feel free to contact me for more details. They are a great way to bring training to you without you having to worry about location or being out from work for long stretches.

You can register for these sessions just as you would for any normal ILT class either by:

1. calling order admin at <http://www.ptc.com/services/edserv/training/registra.htm> or

2. you can go to PTC University directly at <http://www.ptc.com/learning> and submit a registration request directly. All you have to do is search the catalog by typing in “virtual” in the search field and you will see a listing.

PTC Tips & Techniques Newsletter Archives

Miss an issue! Can't find that awesome technique you read about? Fear not, you can click on the link below and go through our Customer PTC E-Newsletter archives.

[Click Here To Access](#)

It's better than finding the Covenant of the Ark!

PTC Tips & Techniques Webcasts: Work Smarter. Not Harder.

Click below to see regularly scheduled Tips & Techniques technical Webcasts that are designed to provide you with the most popular time-saving tricks that Pro/ENGINEER users of all skill levels will find useful. Get more out of your maintenance dollars!

[Tips & Techniques: Work Smarter Not Harder!](#)

Thinking About Pro/ENGINEER Wildfire? Check this out.



<http://www.ptc.com/go/engineering/index.htm>

E-PROFILES IS HERE!!

We have been eagerly anticipating the debut of the new electronic version of Profiles Magazine and now it is here! This new web site will supplement the print edition of the magazine and will provide new useful features not feasible with paper media. e-Profiles will provide you with 24x7, worldwide access to key information previously available exclusively in the print version. "Tips & Tricks," a popular feature pioneered by Pro/USER, has also moved to the web and will be expanded as the site matures.

Please take a few minutes to check out this new web site. We don't think you will be disappointed.

<http://profilesmagazine.com/>

[Back To Top](#)

Upcoming Events & Training Class Schedules

Upcoming, 2005 Your local Pro/Engineer User Groups
<http://www.ptcuser.org/rugs/>

Upcoming, 2006 TBD
PTC/USER International Conference
<http://www.ptcuser.org/>

Events

Our seminars and conferences seek to provide you with relevant information regarding product development trends in your industry as well as innovative software learning experiences. Think of them as a constructive day off where you can share experiences and swap ideas with your peers.

If you can't manage to get away, we'll bring it to you. Check back often for regularly scheduled live webcast events.

[You're Invited to Attend...](#)

Please visit the [PTC Education Services](#) website for the latest training information including course descriptions, schedules, locations, and pricing.

- Attend a course at any PTC Center and receive a **free** copy of Pro/ENGINEER Wildfire Student Edition!

<http://www.ptc.com/services/edserv/index.htm>

Live Instructor-Lead Virtual PTC Training Courses

PTC will be offering a series of Virtual Classrooms this quarter for you looking to save money (15% off ILT prices) and cut down on travel.

Virtual Classrooms provide interactive learning with a trained PTC instructor in convenient and manageable sessions that last approximately 4 hours over a series of days. It's easy to join a class right from your desk using a phone or voice-over IP technology.

Sessions are performed just like a traditional ILT (including interactive exercises where you and the instructor can work on lab exercises together) and feature some of our most popular ILT courses. These sessions cover the exact same material as the traditional ILT in-center courses. Also look for some of our most frequently requested mini-topics delivered in the same format that are only an hour - two hours in duration.

If you have any questions about these sessions or would like to see getting other courses, not on this list, on the schedule please feel free to contact me for more details. They are a great way to

bring training to you without you having to worry about location or being out from work for long stretches.

You can register for these sessions just as you would for any normal ILT class either by:

1. calling order admin at <http://www.ptc.com/services/edserv/training/registra.htm> or
2. you can go to PTC University directly at <http://www.ptc.com/learning> and submit a registration request directly. All you have to do is search the catalog by typing in “virtual” in the search field and you will see a listing.

PTC

Note: This PTC E-Newsletter will continue to be used for the following:

- 1) Inform you on events related to PTC products (user groups, conferences, training schedules, etc.)
- 2) Educate you on solutions that are available at PTC
- 3) Tips & Techniques using PTC Products

Note: These messages are compiled in the local PTC office and will be distributed via e-mail.

[Back To Top](#)