



PTC Product Focus: A) [What's New in Import Data Doctor for Wildfire 4.0](#)

B) [Arbortext Publishing Engine Administration Overview](#)

Tips of the Month: A) [Creating a Casting Workpiece Model in Pro/NC](#)

B) [Editing a DCF file with Architect](#)

Announcements: [Most Recent Announcements](#)

Upcoming Events & Training Schedule: [Events & Training Schedule](#)

PTC Product Focus

What's New in Import Data Doctor for Wildfire 4.0

[Click Here To View](#)

[Back To Top](#)

PTC Product Focus

Arbortext Publishing Engine Administration Overview

The Arbortext Publishing Engine is a server-based system that pulls XML and SGML content from a file system or content management system, assembles that content for different audiences and different types of documents, and automatically publishes the assembled content in both print and electronic forms, all with high-quality layout and formatting. Because Arbortext Publishing Engine offers an integral connection to PTC's [Windchill](#), there are particular efficiencies to be gained through its use on the context of PTC's Product Development System.

Because Arbortext Publishing Engine operates in an unattended mode, it forms the foundation of a dynamic enterprise publishing system to deliver publications on demand to multiple types of media, both print and electronic. Arbortext Publishing Engine allows you to:

- Deliver more accurate, more timely and more consistent publications
- Dynamically deliver publications that are customized to the needs of each user
- Immediately produce updated publications across all of your target media
- Automatically publish on demand; pull content from your file system or content management system, assemble that content for different audiences, and publish the

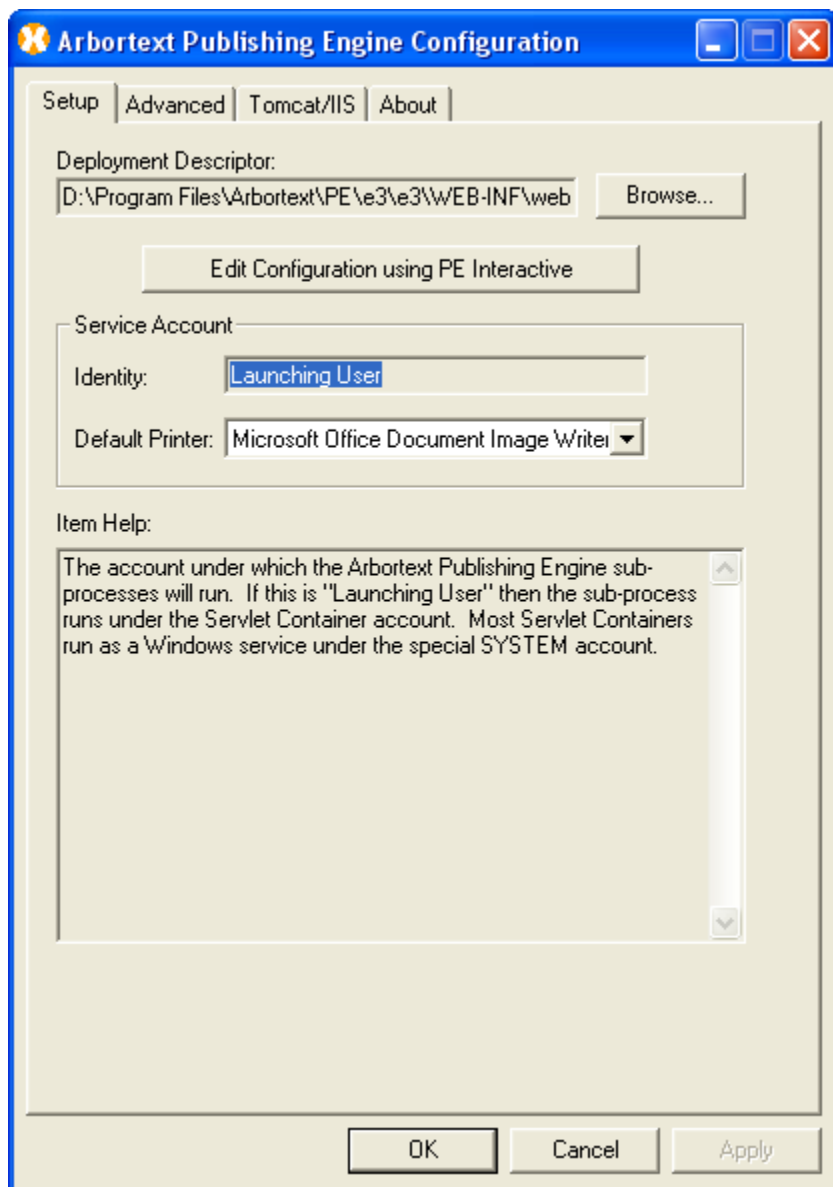
assembled content automatically to print, Web, PDF, Microsoft Word, HTML Help, wireless devices and other media formats

Benefits

- Reduce publishing costs by its support of multiple types of media that helps you reduce or eliminate the cost of supporting a separate publishing process for each different media type
- Speed time to market by automating the publishing process that reduces publishing time from weeks or months to minutes
- Increase productivity by automating publishing. This liberates authors from the responsibility of page layout and design, leaving them free to spend more time creating and updating content.
- Strengthen customer relationships by allowing you to instantly assemble and publish content that is tailored to specific audience requirements and delivered in the media format that best suits their needs

The interface for administration of the Publishing Engine is easy to use once the basic concepts around it are understood. This will provide an overview of the administrative interface.

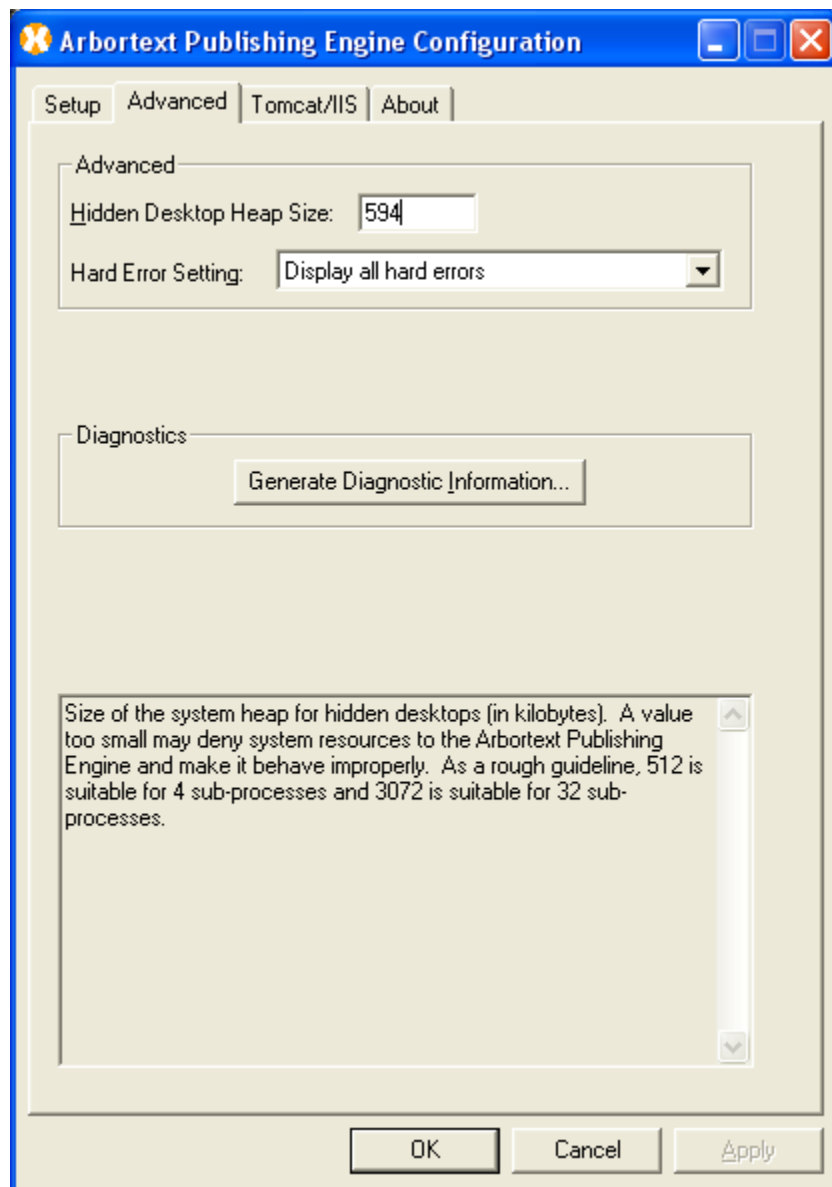
The administrative panel is accessed via the Start Menu using the link Arbortext PE Configuration. This is the panel that will appear.



The deployment descriptor is the path to the xml file used for the configuration of PE. Normally, you only change this if you need to access a copy of the file in a new folder.

The service account is the user under which the processes will be run, and the rights assigned to the process will be defined.

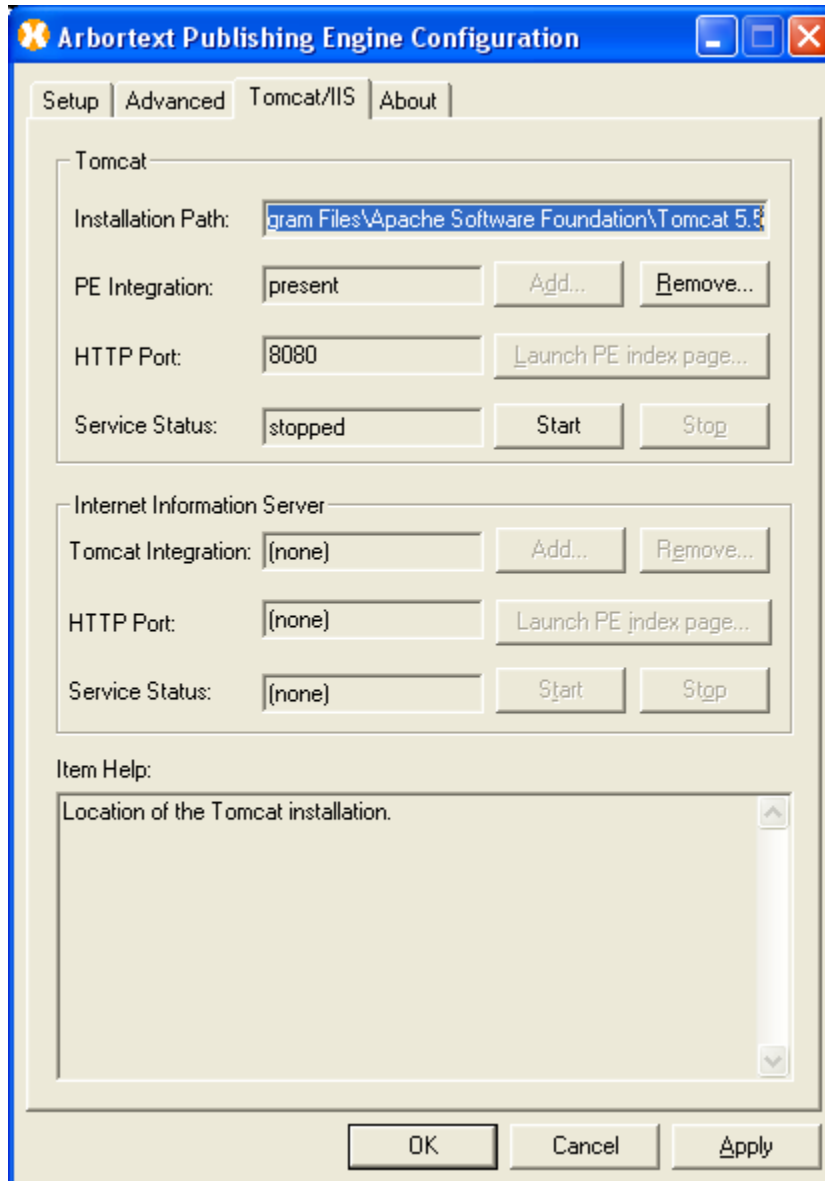
The default printer is for the creation of PostScript output. Due to the advanced nature of the product, Arbortext Publishing Engine is capable of producing PDF without a print driver set here and without Acrobat Distiller.



The next tab is the Advanced tab. The heap size is the amount of memory allocated for publishing engine sub-processes. A value too small may deny system resources to the Arbortext Publishing Engine and make it behave improperly. As a rough guideline, 512 is suitable for 4 sub-processes and 3072 is suitable for 32 sub-processes.

Hard Error Setting displays the current setting for handling hard error popup windows. You should suppress the hard error popup window because it must be dismissed by a user at the system keyboard. In a production environment, suppressing this popup window allows the system to automatically terminate and restart the process unattended. All errors, whether displayed or suppressed, are entered in the Windows event log, so you can check the entries there for information about errors.

The diagnostics button generates detailed information about the Arbortext Publishing Engine and loads it into a text window. This information may be useful for troubleshooting purposes or for sending to Arbortext technical support.



The installation path is the path to the install of Tomcat that is being used by publishing engine.

PE integration is the status of an integration between the Arbortext Publishing Engine and Tomcat. "present" means there is one. "none" means there is none. "other" means there is an integration with some Arbortext Publishing Engine installation other than the one we are currently editing. To see the location of the current Arbortext Publishing Engine deployment descriptor, see the Deployment Descriptor: entry on the Setup page.

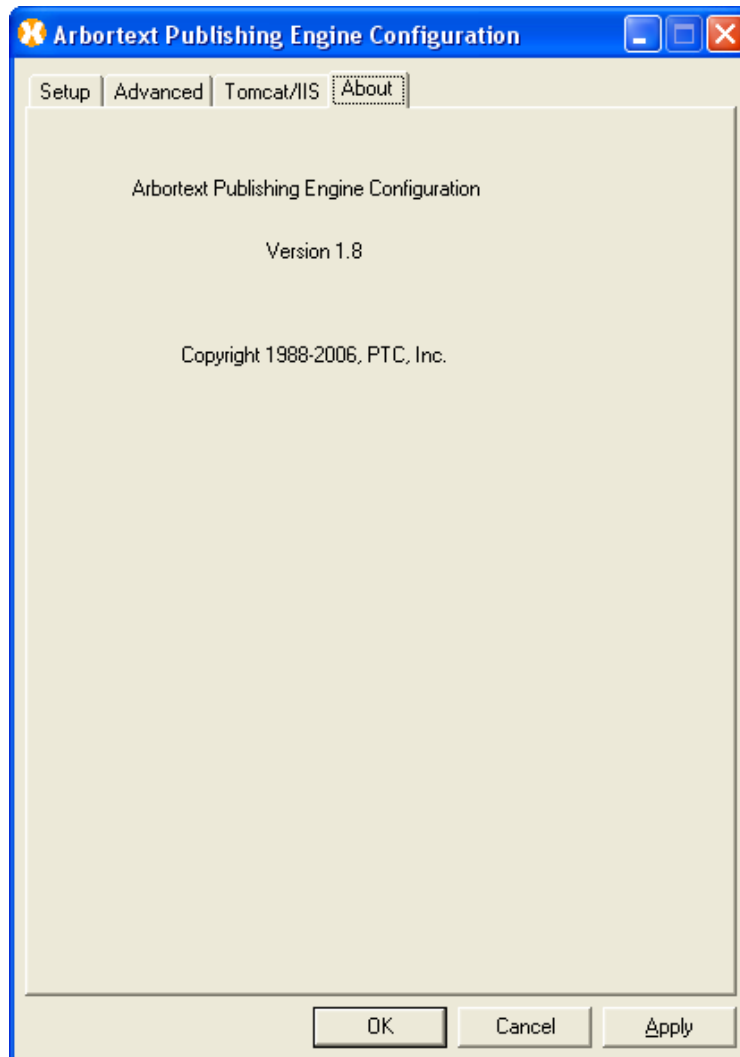
HTTP port is the port Tomcat uses to service HTTP requests.

Service Status displays the status of the "Apache Tomcat" service.

Tomcat Integration shows the status of an integration between IIS and Tomcat. "present" means there is one. "none" means there is none. "custom" means there appears to be an integration but it was not put there by this installation of the Arbortext Publishing Engine.

The HTTP port here is for IIS.

This Service Status is the status of the "World Wide Web Publishing Service". This is the IIS service that acts as an HTTP server.



And the about page has information that might be required by tech support.

This overview of the publishing engine will assist in making this powerful tool easier to use, and more helpful in an enterprise environment.

[Back To Top](#)

Tips of the Month

Creating a Casting Workpiece Model in Pro/NC

[Click Here To View](#)

[Back To Top](#)

Tips of the Month

Editing a DCF file with Architect

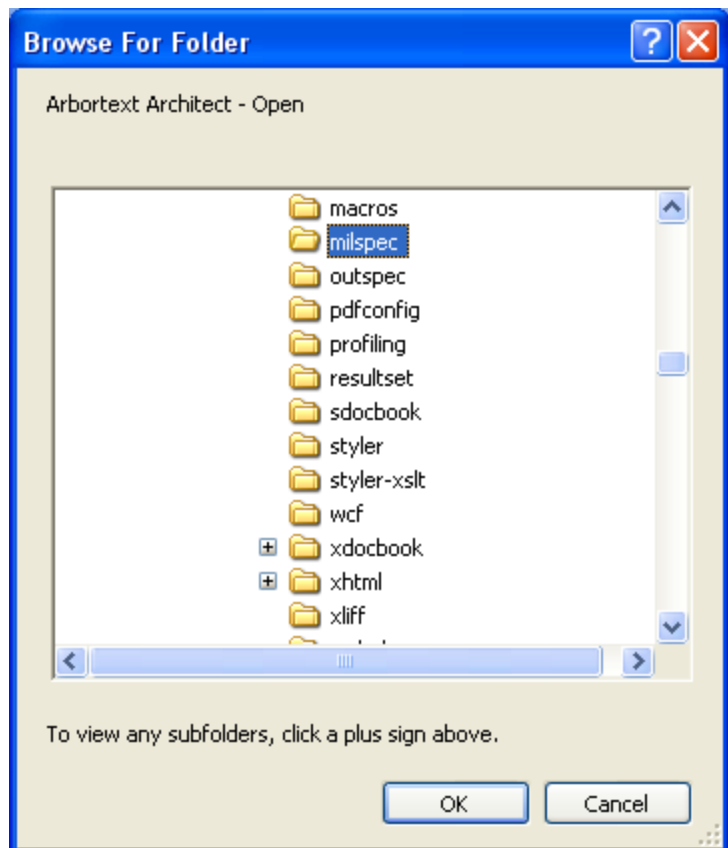
Arbortext Architect provides configuration, development and prototyping tools to help developers build Arbortext applications for converting, creating, publishing and delivering documentation and publications.

Arbortext Architect includes a graphical user interface for development and maintenance of DTDs (Document Type Definitions) and XML Schemas. You can customize the authoring environment by customizing and creating toolbars, embedding forms for capturing data, and creating tag aliases to support multi-lingual applications.

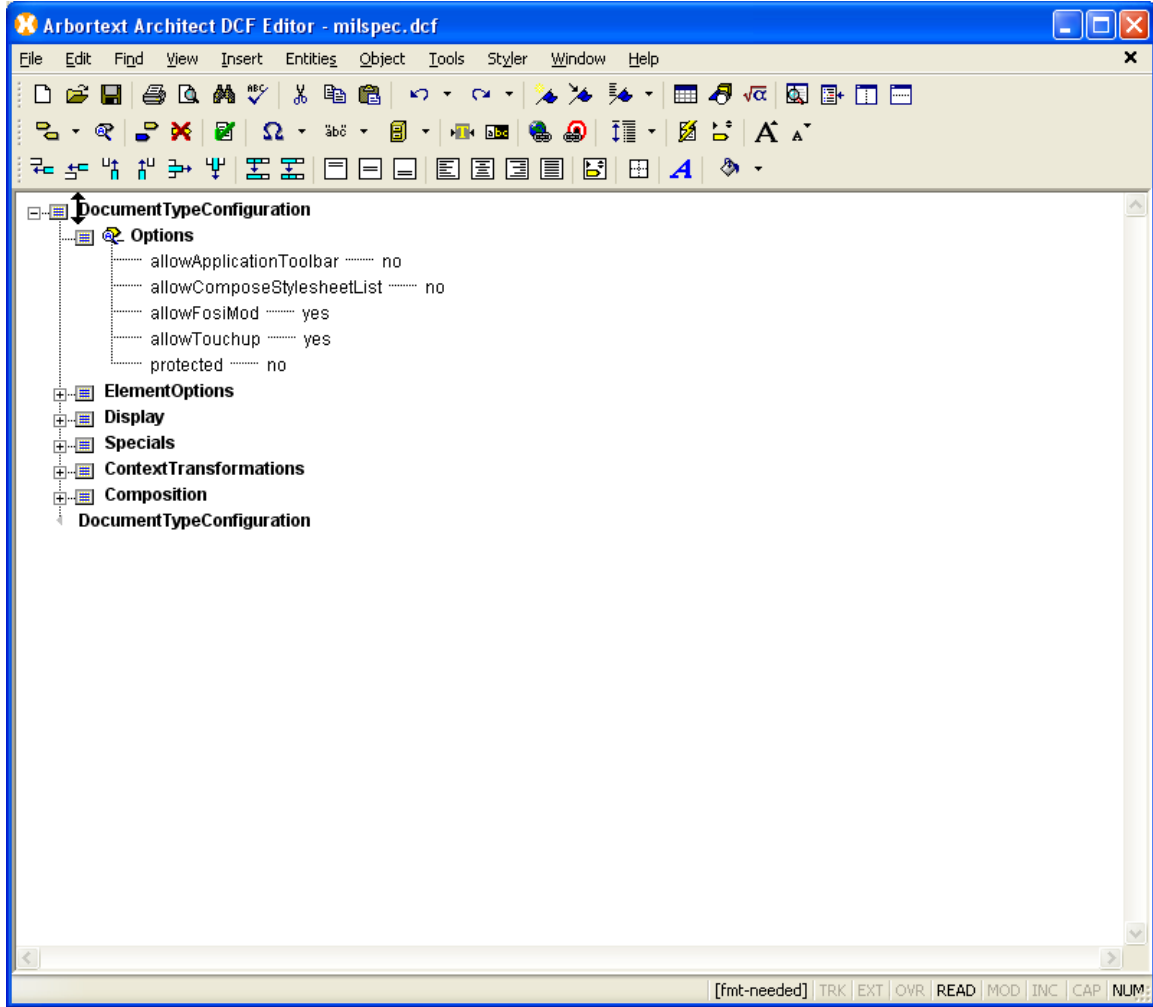
Use Arbortext Architect's graphical data modeling interface to build and maintain Document Type Definitions and Schemas that support your unique business requirements.

This Tip of the Week is how to use Architect to edit a DCF file. DCF files are the files Documents Configuration Files used to further customize a DTD.

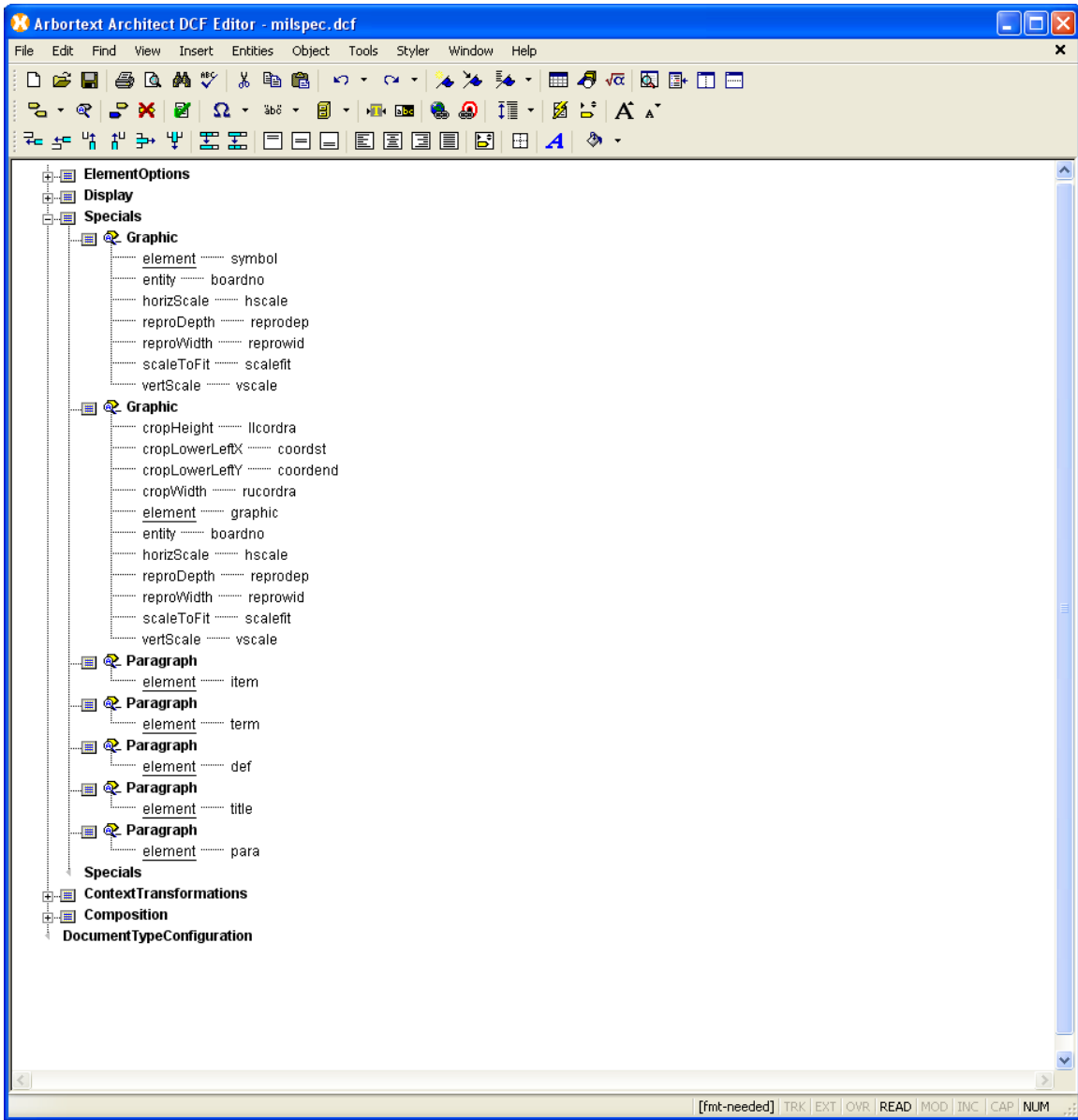
The first step is to point Architect to the directory with the doctype for the dcf you want to edit.



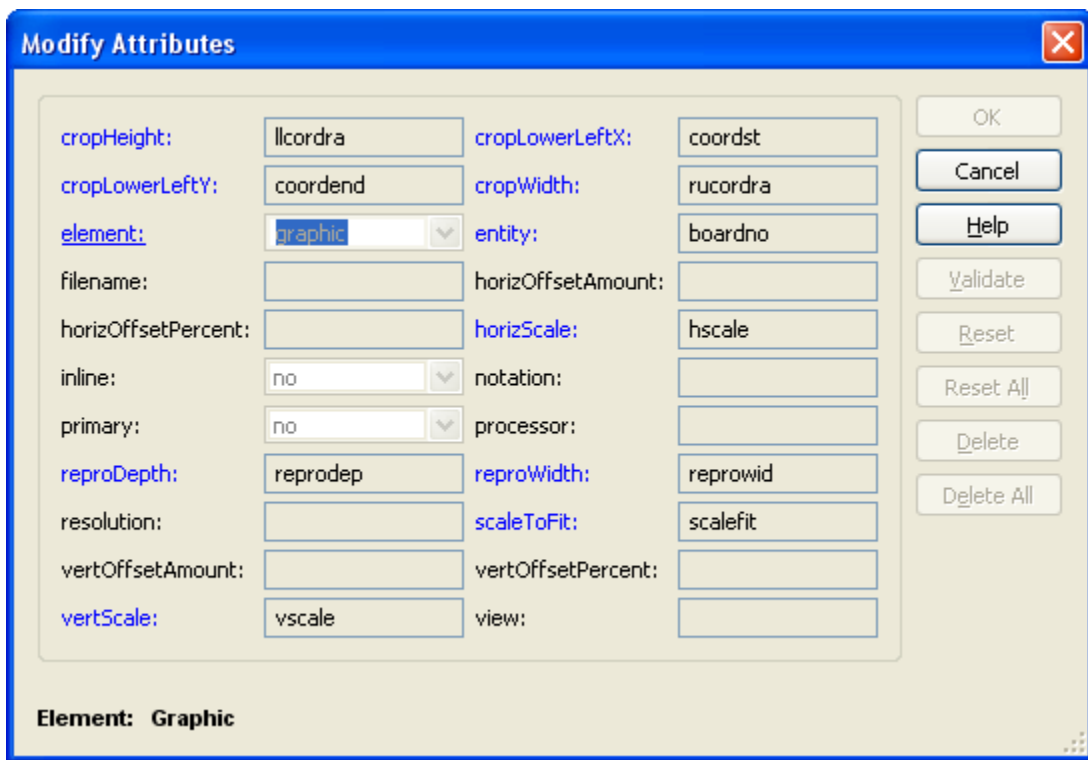
Then, you can select Edit/DCF from the menu bar and it will bring up the dcf file in a graphic interface making it easy to edit.



You can expand the tree hierarchy to select and edit the components desired.



And, you can click modify attributes on the different elements and bring up an attribute window.



This powerful and easy to use tool makes the technically difficult job of editing a dcf file much easier.

[Back To Top](#)

Announcements

Educational Resource Library

Learn things you always wanted to do - but didn't know you could.

This one stop educational resource library will help you learn more about PTC Solutions and provide you with technical materials developed by the product experts to help you become more productive.

Get tutorials, how-to videos and expert advice for:

- Pro/ENGINEER
 - Conceptual and Industrial Design
 - Detailed Design
 - Simulation/Analysis
 - Production
 - Design Collaboration
- Windchill PDMLink
- Windchill ProjectLink
- Pro/INTRALINK
- PTC Online Tools

Check out the [Educational Resource Library](#) today.

PTC Tips & Techniques Newsletter Archives

Miss an issue! Can't find that awesome technique you read about? Fear not, you can click on the link below and go through our Customer PTC E-Newsletter archives.

[Click Here To Access](#)

It's better than finding the Ark of the Covenant!

PTC Tips & Techniques Webcasts: Work Smarter. Not Harder.

Click below to see regularly scheduled Tips & Techniques technical Webcasts that are designed to provide you with the most popular time-saving tricks that Pro/ENGINEER users of all skill levels will find useful. Get more out of your maintenance dollars!

[Tips & Techniques: Work Smarter Not Harder!](#)

E-PROFILES IS HERE!!

We have been eagerly anticipating the debut of the new electronic version of Profiles Magazine and now it is here! This new web site will supplement the print edition of the magazine and will

provide new useful features not feasible with paper media. e-Profiles will provide you with 24x7, worldwide access to key information previously available exclusively in the print version. "Tips & Tricks," a popular feature pioneered by Pro/USER, has also moved to the web and will be expanded as the site matures.

Please take a few minutes to check out this new web site. We don't think you will be disappointed.

<http://profilesmagazine.com/>

[Back To Top](#)

Upcoming Events & Training Class Schedules

Upcoming, 2008 Your local Pro/Engineer User Groups
<http://www.ptcuser.org/rugs/>

June 1 – 4, 2008 Long Beach, CA USA
PTC/USER World Event
<http://www.ptcuser.org/>

Events

Our seminars and conferences seek to provide you with relevant information regarding product development trends in your industry as well as innovative software learning experiences. Think of them as a constructive day off where you can share experiences and swap ideas with your peers.

If you can't manage to get away, we'll bring it to you. Check back often for regularly scheduled live webcast events.

[You're Invited to Attend...](#)

Please visit the [PTC Education Services](#) website for the latest training information including course descriptions, schedules, locations, and pricing.

- Attend a course at any PTC Center and receive a **free** copy of Pro/ENGINEER Wildfire Student Edition!

<http://www.ptc.com/services/edserv/index.htm>

Live Instructor-Lead Virtual PTC Training Courses

Virtual Classrooms provide interactive learning with a trained PTC instructor in convenient and manageable sessions that last approximately 4 hours over a series of days. It's easy to join a class right from your desk using a phone or voice-over IP technology.

Sessions are performed just like a traditional ILT (including interactive exercises where you and the instructor can work on lab exercises together) and feature some of our most popular ILT courses. These sessions cover the exact same material as the traditional ILT in-center courses. Also look for some of our most frequently requested mini-topics delivered in the same format that are only an hour - two hours in duration.

If you have any questions about these sessions or would like to see getting other courses, not on this list, on the schedule please feel free to contact me for more details. They are a great way to bring training to you without you having to worry about location or being out from work for long stretches.

You can register for these sessions just as you would for any normal ILT class either by:

1. calling order admin at <http://www.ptc.com/services/edserv/training/registra.htm> or
2. you can go to PTC University directly at <http://www.ptc.com/learning> and submit a registration request directly. All you have to do is search the catalog by typing in “virtual” in the search field and you will see a listing.

PTC

Note: This PTC E-Newsletter will continue to be used for the following:

- 1) Inform you on events related to PTC products (user groups, conferences, training schedules, etc.)
- 2) Educate you on solutions that are available at PTC
- 3) Tips & Techniques using PTC Products

Note: These messages are compiled in the local PTC office and will be distributed via e-mail.

[Back To Top](#)