



new!

PTC Product Focus: [A\) Advanced Rendering in Wildfire 3.0 & What's New in 4.0](#)

[B\) Arbortext IsoDraw – Connecting Technical Illustrations to Technical Publications](#)

new!

Tips of the Month: [A\) Creating & Using Custom Drawing Templates in Pro/ENGINEER Wildfire 3.0](#)

[B\) Arbortext Editor – Where are the Graphics?](#)

Announcements: [Most Recent Announcements](#)

Upcoming Events & Training Schedule: [Events & Training Schedule](#)

PTC Product Focus

Advanced Rendering in Wildfire 3.0 & What's New in 4.0

Your aim is for your design to stand apart. So beyond the product's form and function is the visual impression made by your work. With Pro/ENGINEER Advanced Rendering, you can quickly create stunningly realistic product images, enabling richer marketing material, more impressive client meetings, and more compelling design reviews.

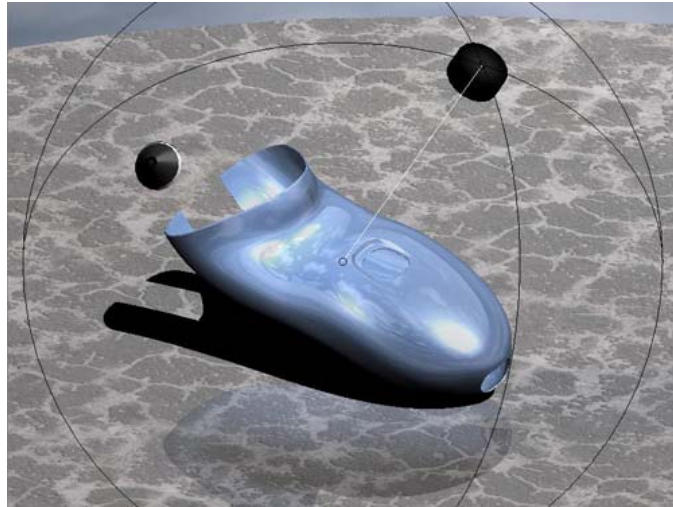
Advanced Rendering in Wildfire 3.0 offers several useful tools to make your designs “shine”, including Direct Light Manipulation and Rendering Scene Files. Read on to see how these tools can help you show off your designs and learn about a few of the new improvements coming soon in Wildfire 4.0.

Capabilities & Benefits

- High-end product rendering capabilities including ray tracing and depth of field
- Over 200 material types to infuse designs with the ultimate level of realism
- High-performance rendering to arrive at the result quickly
- Advanced lighting effects, realistic reflections, shadows, and fog
- Improved design presentation allows better marketing and more informed decision-making before costly prototyping

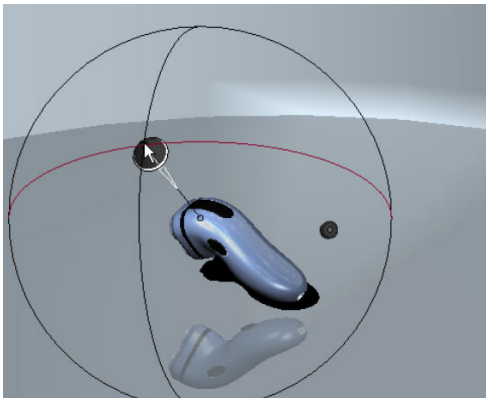
Direct Light Manipulation

With Direct Light Manipulation you have full control over the source of light in your rendering. Through the menu path **View → Model Setup → Lights** you are able to specify the location of the light source, the destination point of the light path, the distance from you object, and the aperture of the light source.

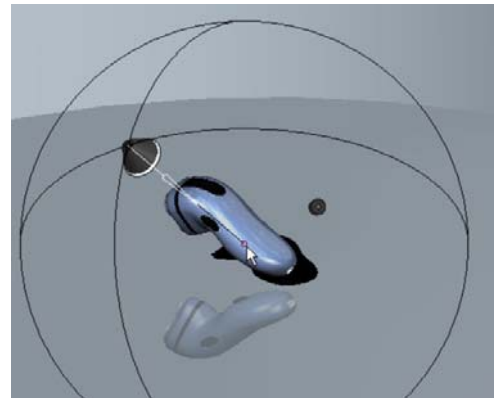


Direct Light Manipulation

To control the location of your light source, simply left-click on your light source and drag it around the sphere surrounding your object. You will see the resulting shadow and reflections adjust in real time. If you want the light to be directed toward a different point on your object, you can click and drag the small circle at the end of the light path to the desired location.

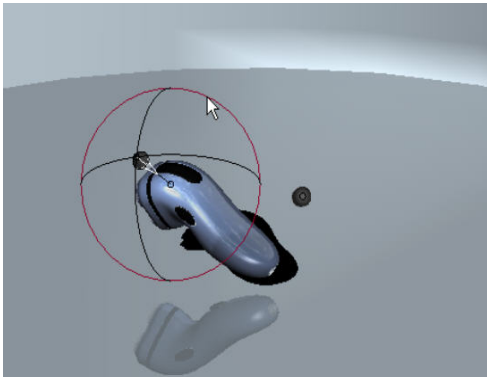


Location of the Light Source

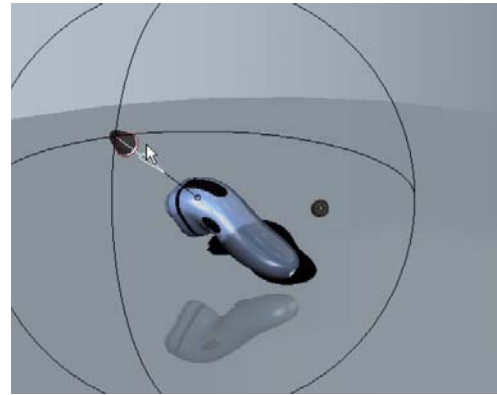


Destination of the Light Path

If you'd prefer your light source to be closer to your object you can click on the perimeter of the sphere and drag in/out to the desired distance to adjust the intensity of the light. You also have control over the aperture of the light source to change how targeted or broad your light source is directed at the object. Using these two settings, you can better control how the lighting plays off of the design.



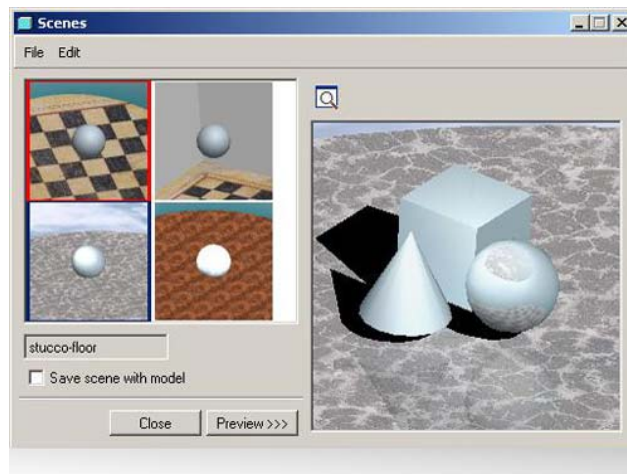
Distance from the Object



Opening of the Light Source

Rendering Scene Files

With Rendering Scene Files, you can create a specific scene that you'd like to display your model in, and either save it to your part/assembly file, or as a separate scene file to be used in other models with minimal adjustment. These scene files record information about the lighting, the room, and various environmental effects associated with the scene. To access this feature, use the menu path **View → Model Setup → Scene Palette**.



Rendering Scene Files

What's New in Wildfire 4.0

Pro/ENGINEER Wildfire 4.0 includes several enhancements to the Advanced Rendering tool. Some of these upgrades include an expanded standard graphics library, giving the user more options to portray their model in an appropriate setting, and skylight lighting, which creates a dome of lights around the object, providing an even distribution of light. There is also a color temperature option which lets you better control the type of lighting source you use. Some of

your options include candle, light bulb, tungsten halogen, daylight, and lightly overcast sky, etc. These additions to the product will provide even more robust options to bring your designs to life.

More Information on Advanced Rendering

To find out more about Pro/ENGINEER's [Advanced Rendering](#) visit our Website.

[Back To Top](#)

PTC Product Focus

Arbortext IsoDraw – Connecting Technical Illustrations to Technical Publications

[Click Here To View](#)

[Back To Top](#)

Creating & Using Custom Drawing Templates in Pro/ENGINEER Wildfire 3.0

Drawing templates automatically create the views, set the desired view display, create snap lines, and show model dimensions. They contain three basic types of information for creating new drawings; basic information, instructions, and parametric notes.

Basic information is anything that makes up a drawing but is not dependent on the drawing model, such as notes, symbols, and so forth. This information is copied from the template into the new drawing.

Instructions are used to configure drawing views and the actions that are performed on that view. The instructions are used to build a new drawing with a new drawing object (model).

Parametric notes are notes that update to new drawing model parameters and dimension values. The notes are re-parsed or updated when the template is instantiated.

You can use drawing templates to:

- Define the layout of views
- Set view display
- Place notes
- Place symbols
- Define tables
- Create snap lines
- Show dimensions

You can also create customized drawing templates for the different types of drawings that you create. For example, you can create a template for a machined part versus a cast part or a sheet metal part. Creating a template allows you to create portions of drawings automatically, using the customizable template

Creating a Drawing Template

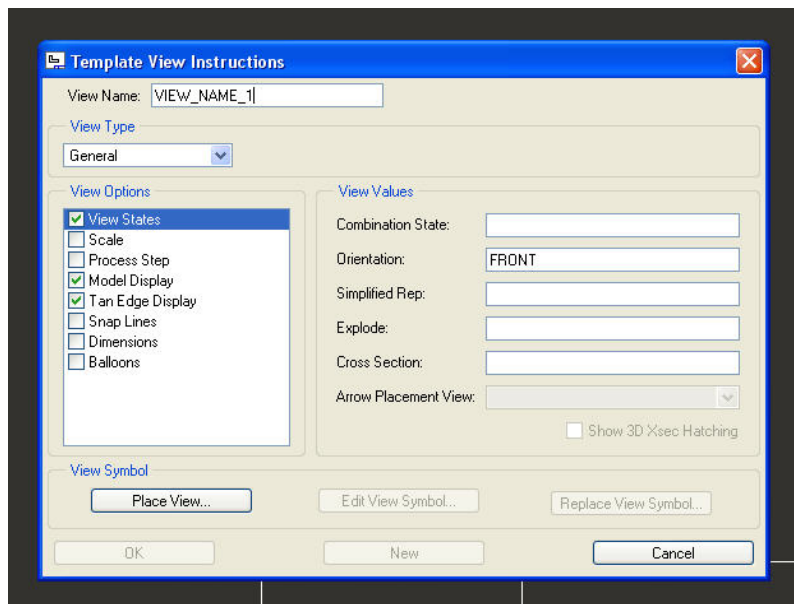
Create a new drawing file from the **File → New** menu, and name the file what you'd like the template to be saved as. Select **Use default template** and click **OK**. Click **Empty** or **Empty with format**.

If you click **Empty with format**: Under **Format**, specify the format you want to use. Then click **OK**. Pro/ENGINEER creates a new drawing with the specified format.

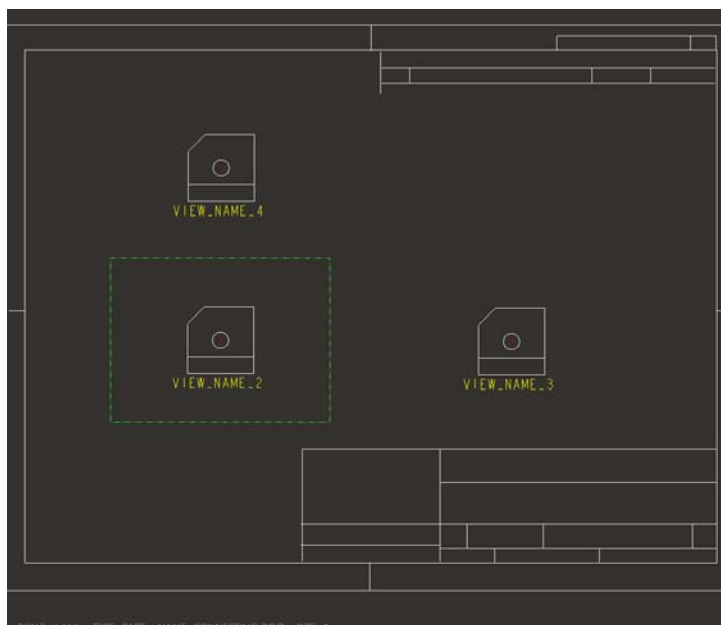
If you click **Empty**: Under **Orientation**, specify the template orientation by clicking **Portrait**, **Landscape**, or **Variable**. For **Portrait** or **Landscape**, choose a standard size under **Size**. For **Variable**, specify a size using the **Width** and **Height** boxes, and specify a unit by selecting **Inches** or **Millimeters**.

Click **Applications → Template** to enter drawing template mode

Click **Insert** → **Template View** and type the view name or accept the default, and then specify the view orientation. Specify view options and view values in the **View Options** and **View Values** areas. Click **Place View** and select the location of the General view.

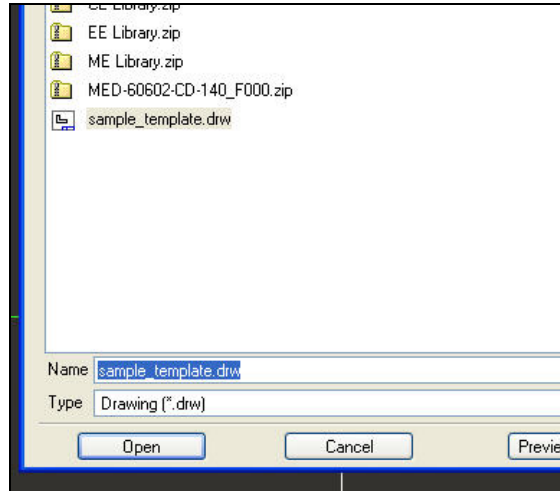


To place additional views, click **New**, type the new view name, and orient the new view. Specify the view options and view values of the new view. When you are done placing all of the desired views, click **OK**. Save the template



Create a Drawing Using a Drawing Template

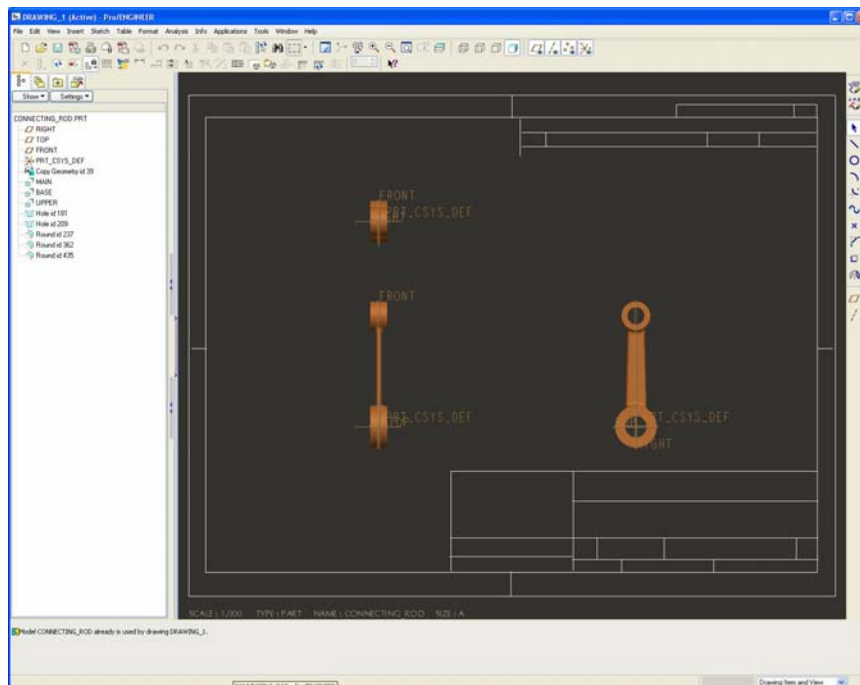
Create a new drawing. (**File** → **New**. Click **Drawing**) Clear the **Use default template** checkbox, and then click **OK**. In the **New Drawing** dialog select the model from which you want to create the drawing.



Specify the template by clicking **Use template**. Type the name of the template you want to use or select a template from the **Template** list. Click **OK**. The drawing is created.

Note: The views with the correct attributes in both the template and the model are created. If attributes that are defined in the template do not exist in the model, errors occur when the drawing is being created. The **Drawing Template Error Info** dialog box opens and lists the errors.

To access the **Drawing Template Error Info** dialog box, click **Info** > **Template Errors**.



Now that you know how to use Drawing Templates you can incorporate them into your work, and create drawings quickly and easily knowing that all of your essential information will be included as soon as it's created.

[Back To Top](#)

Tips of the Month

Arbortext Editor – Where are the Graphics?

[Click Here To View](#)

[Back To Top](#)

Announcements

Educational Resource Library

Learn things you always wanted to do - but didn't know you could.

This one stop educational resource library will help you learn more about PTC Solutions and provide you with technical materials developed by the product experts to help you become more productive.

Get tutorials, how-to videos and expert advice for:

- Pro/ENGINEER
 - Conceptual and Industrial Design
 - Detailed Design
 - Simulation/Analysis
 - Production
 - Design Collaboration
- Windchill PDMLink
- Windchill ProjectLink
- Pro/INTRALINK
- PTC Online Tools

Check out the [Educational Resource Library](#) today.

PTC Tips & Techniques Newsletter Archives

Miss an issue! Can't find that awesome technique you read about? Fear not, you can click on the link below and go through our Customer PTC E-Newsletter archives.

[Click Here To Access](#)

It's better than finding the Covenant of the Ark!

PTC Tips & Techniques Webcasts: Work Smarter. Not Harder.

Click below to see regularly scheduled Tips & Techniques technical Webcasts that are designed to provide you with the most popular time-saving tricks that Pro/ENGINEER users of all skill levels will find useful. Get more out of your maintenance dollars!

[Tips & Techniques: Work Smarter Not Harder!](#)

E-PROFILES IS HERE!!

We have been eagerly anticipating the debut of the new electronic version of Profiles Magazine and now it is here! This new web site will supplement the print edition of the magazine and will

provide new useful features not feasible with paper media. e-Profiles will provide you with 24x7, worldwide access to key information previously available exclusively in the print version. "Tips & Tricks," a popular feature pioneered by Pro/USER, has also moved to the web and will be expanded as the site matures.

Please take a few minutes to check out this new web site. We don't think you will be disappointed.

<http://profilesmagazine.com/>

[Back To Top](#)

Upcoming Events & Training Class Schedules

Upcoming, 2007 Your local Pro/Engineer User Groups
<http://www.ptcuser.org/rugs/>

2008 USA
PTC/USER World Event
<http://www.ptcuser.org/>

Events

Our seminars and conferences seek to provide you with relevant information regarding product development trends in your industry as well as innovative software learning experiences. Think of them as a constructive day off where you can share experiences and swap ideas with your peers.

If you can't manage to get away, we'll bring it to you. Check back often for regularly scheduled live webcast events.

[You're Invited to Attend...](#)

Please visit the [PTC Education Services](#) website for the latest training information including course descriptions, schedules, locations, and pricing.

- Attend a course at any PTC Center and receive a **free** copy of Pro/ENGINEER Wildfire Student Edition!

<http://www.ptc.com/services/edserv/index.htm>

Live Instructor-Lead Virtual PTC Training Courses

Virtual Classrooms provide interactive learning with a trained PTC instructor in convenient and manageable sessions that last approximately 4 hours over a series of days. It's easy to join a class right from your desk using a phone or voice-over IP technology.

Sessions are performed just like a traditional ILT (including interactive exercises where you and the instructor can work on lab exercises together) and feature some of our most popular ILT courses. These sessions cover the exact same material as the traditional ILT in-center courses. Also look for some of our most frequently requested mini-topics delivered in the same format that are only an hour - two hours in duration.

If you have any questions about these sessions or would like to see getting other courses, not on this list, on the schedule please feel free to contact me for more details. They are a great way to bring training to you without you having to worry about location or being out from work for long stretches.

You can register for these sessions just as you would for any normal ILT class either by:

1. calling order admin at <http://www.ptc.com/services/edserv/training/registra.htm> or
2. you can go to PTC University directly at <http://www.ptc.com/learning> and submit a registration request directly. All you have to do is search the catalog by typing in “virtual” in the search field and you will see a listing.

PTC

Note: This PTC E-Newsletter will continue to be used for the following:

- 1) Inform you on events related to PTC products (user groups, conferences, training schedules, etc.)
- 2) Educate you on solutions that are available at PTC
- 3) Tips & Techniques using PTC Products

Note: These messages are compiled in the local PTC office and will be distributed via e-mail.

[Back To Top](#)