



new!

PTC Product Focus: A) [Behavioral Modeling – Spec Driven Models](#)

B) [ProductView Lite](#)

new!

Tips of the Month: A) [Pro/ENGINEER Usability Tips](#)

B) [Using ProductView Lite](#)

Announcements: [Most Recent Announcements](#)

Upcoming Events & Training Schedule: [Events & Training Schedule](#)

PTC Product Focus

Behavioral Modeling – Spec Driven Models

[Click Here To View](#)

[Back To Top](#)

PTC Product Focus

ProductView Lite

In most companies today, engineers produce product data that is used by scores of others downstream in their organization. These can be users in diverse organizations such as technical publications, manufacturing, marketing, sales, and procurement who don't have the applications or training to directly open the models and drawings that have been created by engineering. PTC has a simple, easy to use solution for these casual users, ProductView Lite.

ProductView Lite is a web-based lightweight viewer for mechanical CAD models and drawings from Pro/ENGINEER, Unigraphics NX, CATIA, SolidWorks, Autodesk Inventor, and AutoCAD. ProductView Lite comes with PDMLink and is an optional component of IntraLink. Since it is a web plug-in, the user does not have to download and install it as an application. The first time the user clicks on the thumbnail to view the model, the plug-in automatically installs. Further, ProductView Lite will automatically update itself if a new version is loaded onto the server.

Product Capabilities

ProductView Lite has all of the basic capabilities that a casual user would need:

- Spin/Pan/Zoom of solid models
- View and create markups on solid models and drawings

- Accurate 2D and 3D measurements
- Drag and drop exploding of 3D parts
- Viewing and interrogation of dimensions and GD&T created in Wildfire 3.0
- Copy 3D models views for pasting into Windows applications
- Lightweight file size for fast download, even over poor networks

[Back To Top](#)

Tips of the Month

Pro/ENGINEER Usability Tips

[Click Here To View](#)

[Back To Top](#)













Tips of the Month

Using ProductView Lite

ProductView Lite has a few simple but powerful functions for viewing, annotating, and interrogating 2D drawings and 3D Models.

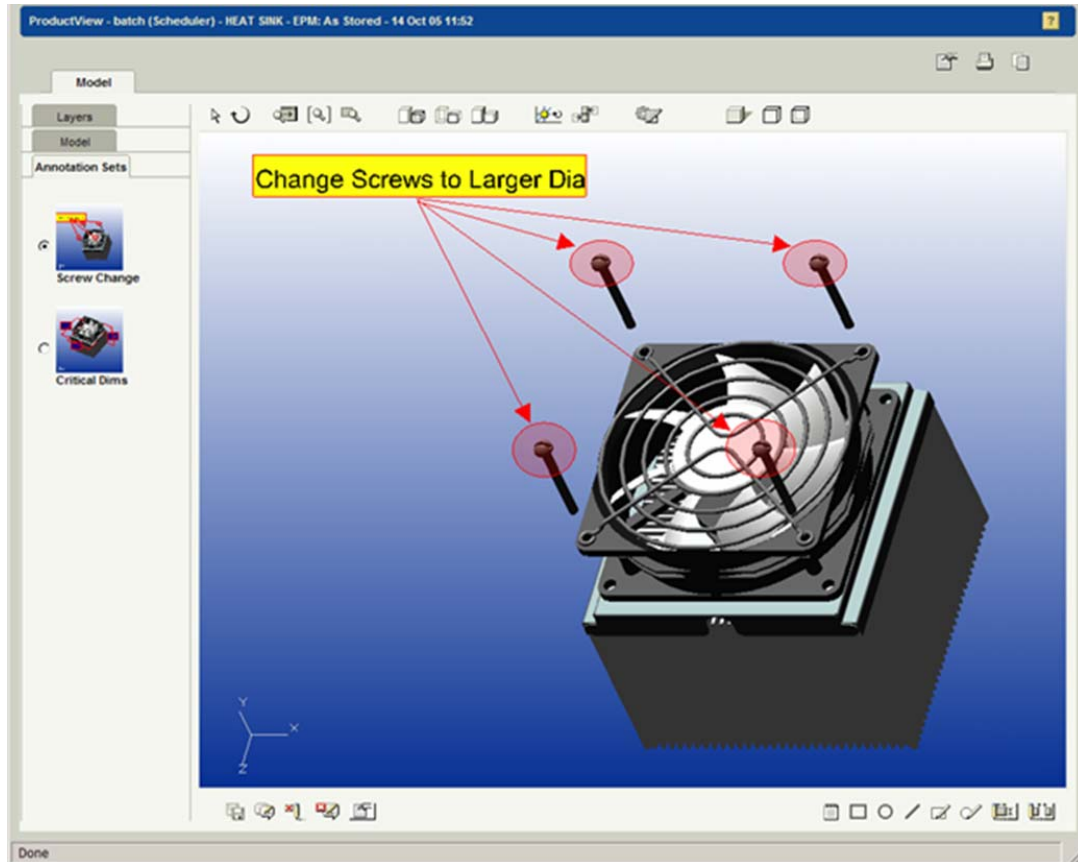
Basic Functions

For most users, the most basic function for which they will use ProductView lite is the simple viewing of the CAD models. This is easily done using your mouse in conjunction with the shift and ctrl keys.

Mouse Buttons		
Spin		
Pan		Ctrl + 
Zoom		Shift + 
Fly		
Select		
Multi-Select		Ctrl + 

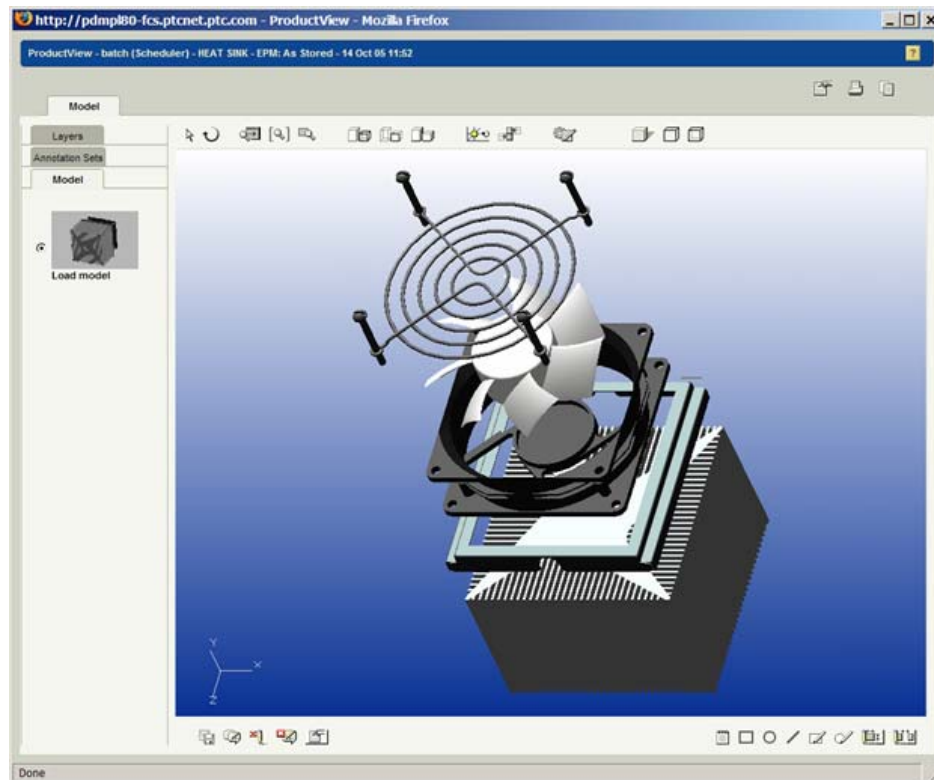
Creating Markups

The ability to create markups on 3D models gives users the ability to suggest changes and save those suggestions back to the server without having to print a drawing or create a separate file. To save a markup to the server, select the “Save” or “Save As” icon on the lower left side of the ProductView screen. All markups for a specific version and iteration of a model show up as a thumbnail image on the “Annotation Sets” tab of ProductView Lite.



Exploding Components

Users can explode parts in an assembly to create a particular exploded state. To do this, users first click the “arrow” icon on the upper left of the screen to activate selection. Next, select the on component by clicking on it, or multiple components by ctrl+click. The selected components that are now selected in red can now be dragged by selecting inside the drag box for freehand movement, or by dragging on the coordinate vector for directional movement.

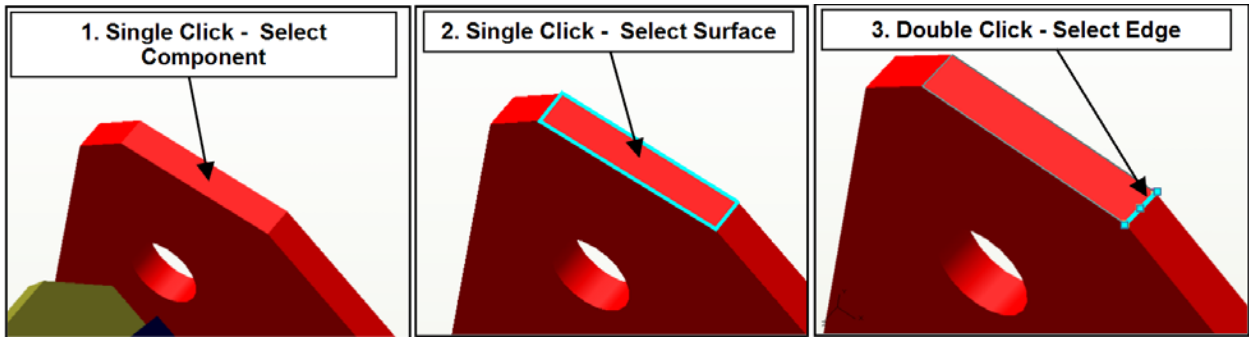


Measuring

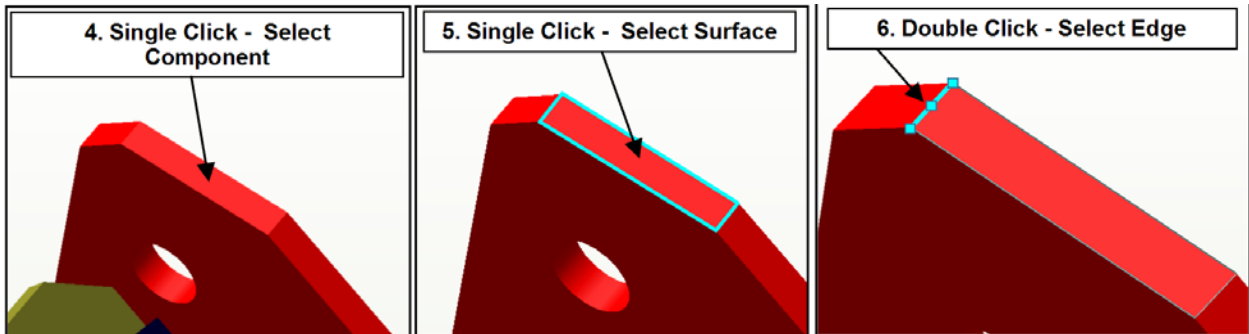
In ProductView Lite, in addition to showing dimensions and GD&T symbols that were create in with Wildfire 3.0’s 3D drawing support, users can measure any dimension they chose. The distance measuring tool supports measurement between any two points, edges, or surfaces. Both measuring features use a multi-step process for selecting what you want to measure by cycling from component to surface to edge to point. The user single clicks to go to the next level and double clicks to stop at a level. Next we’ll go through an example to demonstrate how this works:

Example: Distance Between Two Edges

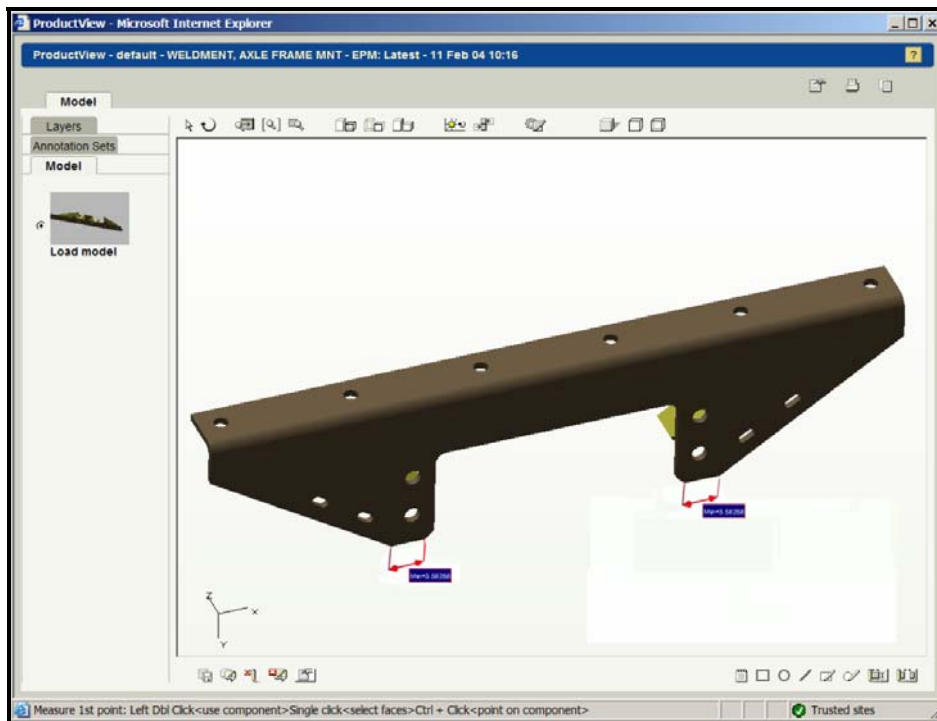
Select the Distance Measuring tool, then single click the component that you want to measure from. Next, single click the surface that the edge lies, and then double click the edge on that surface that you’d like to measure from. Repeat the process for the second edge.



Repeat the process for the second edge.



The measurement now appears on the 3D model. After selecting the arrow symbol, the user can drag the dimension and the dimension value. The measurement can be saved as a markup by selecting the “Save” or “Save As” icon on the lower left of the screen.



[Back To Top](#)

Announcements

Educational Resource Library

Learn things you always wanted to do - but didn't know you could.

This one stop educational resource library will help you learn more about PTC Solutions and provide you with technical materials developed by the product experts to help you become more productive.

Get tutorials, how-to videos and expert advice for:

- Pro/ENGINEER
 - Conceptual and Industrial Design
 - Detailed Design
 - Simulation/Analysis
 - Production
 - Design Collaboration
- Windchill PDMLink
- Windchill ProjectLink
- Pro/INTRALINK
- PTC Online Tools

Check out the [Educational Resource Library](#) today.

PTC Tips & Techniques Newsletter Archives

Miss an issue! Can't find that awesome technique you read about? Fear not, you can click on the link below and go through our Customer PTC E-Newsletter archives.

[Click Here To Access](#)

It's better than finding the Covenant of the Ark!

PTC Tips & Techniques Webcasts: Work Smarter. Not Harder.

Click below to see regularly scheduled Tips & Techniques technical Webcasts that are designed to provide you with the most popular time-saving tricks that Pro/ENGINEER users of all skill levels will find useful. Get more out of your maintenance dollars!

[Tips & Techniques: Work Smarter Not Harder!](#)

E-PROFILES IS HERE!!

We have been eagerly anticipating the debut of the new electronic version of Profiles Magazine and now it is here! This new web site will supplement the print edition of the magazine and will

provide new useful features not feasible with paper media. e-Profiles will provide you with 24x7, worldwide access to key information previously available exclusively in the print version. "Tips & Tricks," a popular feature pioneered by Pro/USER, has also moved to the web and will be expanded as the site matures.

Please take a few minutes to check out this new web site. We don't think you will be disappointed.

<http://profilesmagazine.com/>

[Back To Top](#)

Upcoming Events & Training Class Schedules

Upcoming, 2006 Your local Pro/Engineer User Groups
<http://www.ptcuser.org/rugs/>

June 3 - 6, 2007 Tampa, Florida
PTC/USER International Conference
<http://www.ptcuser.org/>

Events

Our seminars and conferences seek to provide you with relevant information regarding product development trends in your industry as well as innovative software learning experiences. Think of them as a constructive day off where you can share experiences and swap ideas with your peers.

If you can't manage to get away, we'll bring it to you. Check back often for regularly scheduled live webcast events.

[You're Invited to Attend...](#)

Please visit the [PTC Education Services](#) website for the latest training information including course descriptions, schedules, locations, and pricing.

- Attend a course at any PTC Center and receive a **free** copy of Pro/ENGINEER Wildfire Student Edition!

<http://www.ptc.com/services/edserv/index.htm>

Live Instructor-Lead Virtual PTC Training Courses

Virtual Classrooms provide interactive learning with a trained PTC instructor in convenient and manageable sessions that last approximately 4 hours over a series of days. It's easy to join a class right from your desk using a phone or voice-over IP technology.

Sessions are performed just like a traditional ILT (including interactive exercises where you and the instructor can work on lab exercises together) and feature some of our most popular ILT courses. These sessions cover the exact same material as the traditional ILT in-center courses. Also look for some of our most frequently requested mini-topics delivered in the same format that are only an hour - two hours in duration.

If you have any questions about these sessions or would like to see getting other courses, not on this list, on the schedule please feel free to contact me for more details. They are a great way to bring training to you without you having to worry about location or being out from work for long stretches.

You can register for these sessions just as you would for any normal ILT class either by:

1. calling order admin at <http://www.ptc.com/services/edserv/training/registra.htm> or
2. you can go to PTC University directly at <http://www.ptc.com/learning> and submit a registration request directly. All you have to do is search the catalog by typing in “virtual” in the search field and you will see a listing.

PTC

Note: This PTC E-Newsletter will continue to be used for the following:

- 1) Inform you on events related to PTC products (user groups, conferences, training schedules, etc.)
- 2) Educate you on solutions that are available at PTC
- 3) Tips & Techniques using PTC Products

Note: These messages are compiled in the local PTC office and will be distributed via e-mail.

[Back To Top](#)