



**PTC Product Focus:** A) [3D Drawings in Pro/ENGINEER Wildfire 4.0](#)

B) [Windchill PartsLink Classification and Reuse](#)

**Tips of the Month:** A) [Integrating Designs using Pro/ENGINEER WGM](#)

B) [Windchill PartsLink: Creating your own Parts Catalogue](#)

**Announcements:** [Most Recent Announcements](#)

**Upcoming Events & Training Schedule:** [Events & Training Schedule](#)

## PTC Product Focus

### 3D Drawings in Pro/ENGINEER Wildfire 4.0

[Click Here To View](#)

[Back To Top](#)

## PTC Product Focus

### Windchill PartsLink Classification and Reuse

Part duplication and part number proliferation is inefficient and expensive. By reusing existing designs via an online catalog, you can reduce cost and time to market. Windchill PartsLink Classification and Reuse – an integral option for Windchill PDMLink – allows you to organize internal design libraries and make them available to your engineering team through flexible, easy-to-use Web-based library searching mechanisms.

Cost Savings - Most companies have between 5-30% duplicate parts. At an average cost of 10,000 US dollars per new part introduced, this can add up to significant saving quickly. For example, if a parts database has 5000 parts, and has 10% duplicates, the result is 500 duplicate parts at an average cost of 10,000 USD each, or 5 million USD total, which could be saved.

#### Benefits

- Design product or part classification schemas and develop content for structured product information systems
- Support design reuse and provide decision support tools through parts classification and parametric search

- Optimize the creation, use and reuse of designs at all points in the product development process
- Increased engineering productivity, through parametric searches, graphical navigation, and built-in 3D visualization tools
- Parts management drives faster time to market, better sourcing decisions, increased engineering productivity

Owners of Windchill PartsLink Catalog, typically system librarians or Administrators, will use CounterPart to classify product data and then publish it to Windchill PartsLink Catalog for display in the interactive product catalog.

## **Understanding Classification Hierarchy: Overview**

In its most basic sense, a classification schema is a hierarchy. At the top level of the hierarchy is the Root. There can only be one Root in a classification hierarchy. Below the root are parent nodes and child nodes. Any object that has a child node beneath it is a parent node. (In a sense, therefore, the ROOT level itself is a parent to the parent nodes beneath it.) Parent nodes can have more than one child node. The term family refers to a class and all classes below it in the tree. The term sibling refers to children with the same parent node. A leaf is a node with no children.

CounterPart automatically applies the attributes of the parent to the children beneath it. This is called inheritance. For example, if a parent node contains the attribute Color, then all children beneath the parent node will also have the Color attribute. By automatically applying inheritance to the children, CounterPart helps speed up the process of classifying your products.

A PTC classification system consists of a hierarchy containing classes, attributes, values, and units.

More information can be found at

<http://www.ptc.com/products/windchill/partslink-classification-and-reuse>  
[http://www.ptc.com/WCMS/files/51815/en/2357\\_WindchillPartsLink\\_DS\\_EN.pdf](http://www.ptc.com/WCMS/files/51815/en/2357_WindchillPartsLink_DS_EN.pdf)

[Back To Top](#)

## Tips of the Month

### Integrating Designs using Pro/ENGINEER WGM

[Click Here To View](#)

[Back To Top](#)

## Tips of the Month

### Windchill PartsLink: Creating your own Parts Catalogue

In the following scenario we will create a classification to catalogue software IP used in the design of SOC (System on a Chip) Integrated Circuits. After the creation of this Classification Schema our IP Design Centers around the Globe will all be able to leverage each other's pre-existing IP data. It is believed that leveraging pre-existing IP your company will save 10 million per year. Your particular needs may be to catalogue gears, springs, mechanical fasteners, electrical parts, or software components.

Before you begin research and document how you want to structure the schema/ hierarchy

- Mechanical Parts
  - o Bearings
    - Roller Bearings
    - Thrust Bearings
  - o Valves
    - Manual
    - Solenoid
      - normally Open
      - normally Closed

You should document the parameters you wish to associate to each node of the schema.

- OutsideDiameter
  - o Thread\_Pitch
    - Grip\_Length
      - Max\_Load

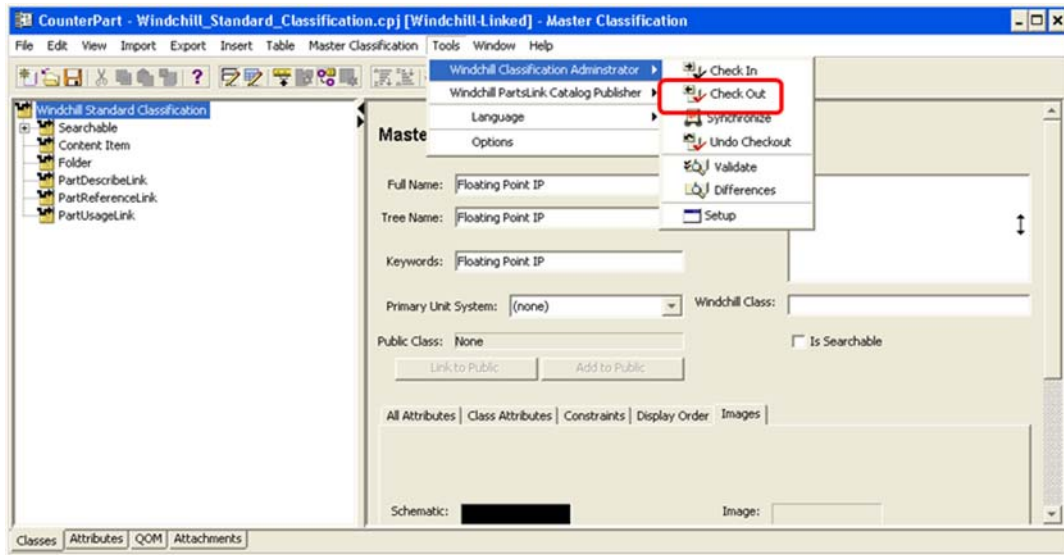
It is also useful to locate pictures which will represent each Node of the schema.

During the installation of PartsLink, CounterPart (our Component Classification application) and its shortcut was installed on your hardware.

The executable is located at ../counterpart/bin/counterpart.bat

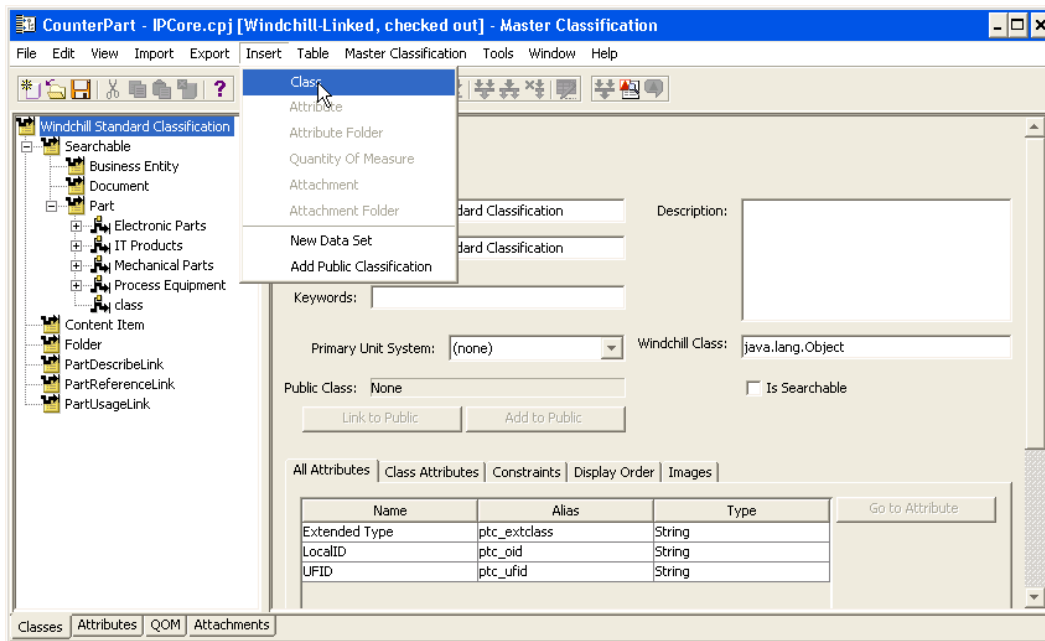
## Creating a Part Classification

After launching and authenticating onto Counterpart you will see the following screen. Select Tools/Windchill Classification Administrator/ Check Out to begin creating a new Searchable Classification.

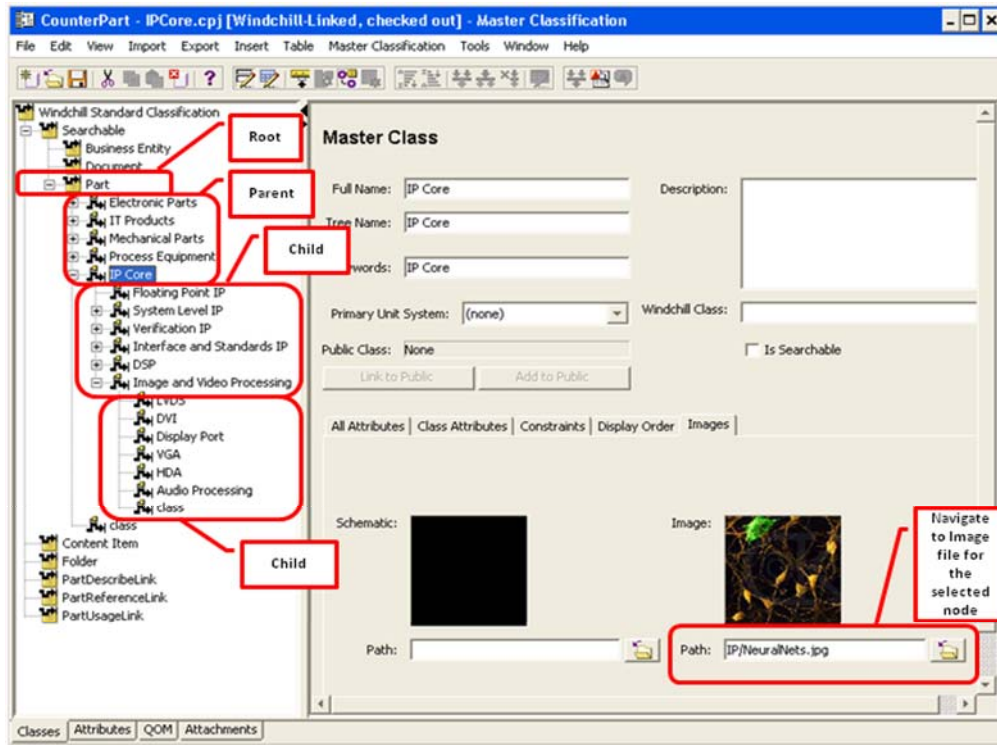


### Adding a new Part Type

- Navigate to Part in the folder view
  - o Select Searchable/Part
- From the Top Menu
  - o Select Class/give the new part classification structure a name (IP Core)
    - This will be the Root node of your new structure

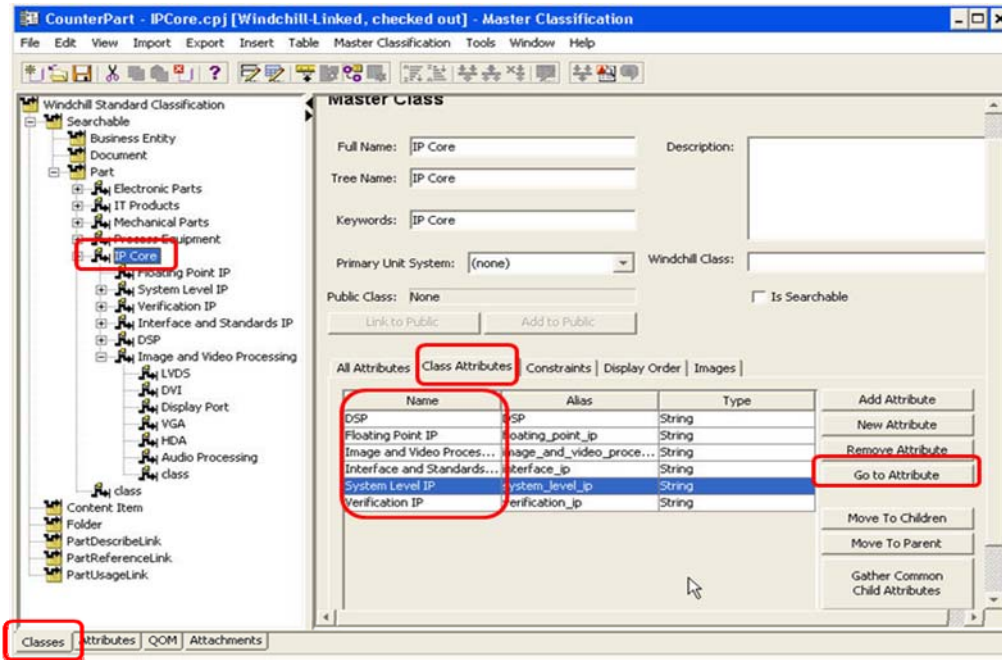


Double click the Root node to add Parent nodes and Child nodes following the same process as mentioned previously. You can attach a picture to represent each node. This will allow you to build you schema /hierarchy as you had documented. You can also navigate by Schematic or choose not to display an image.

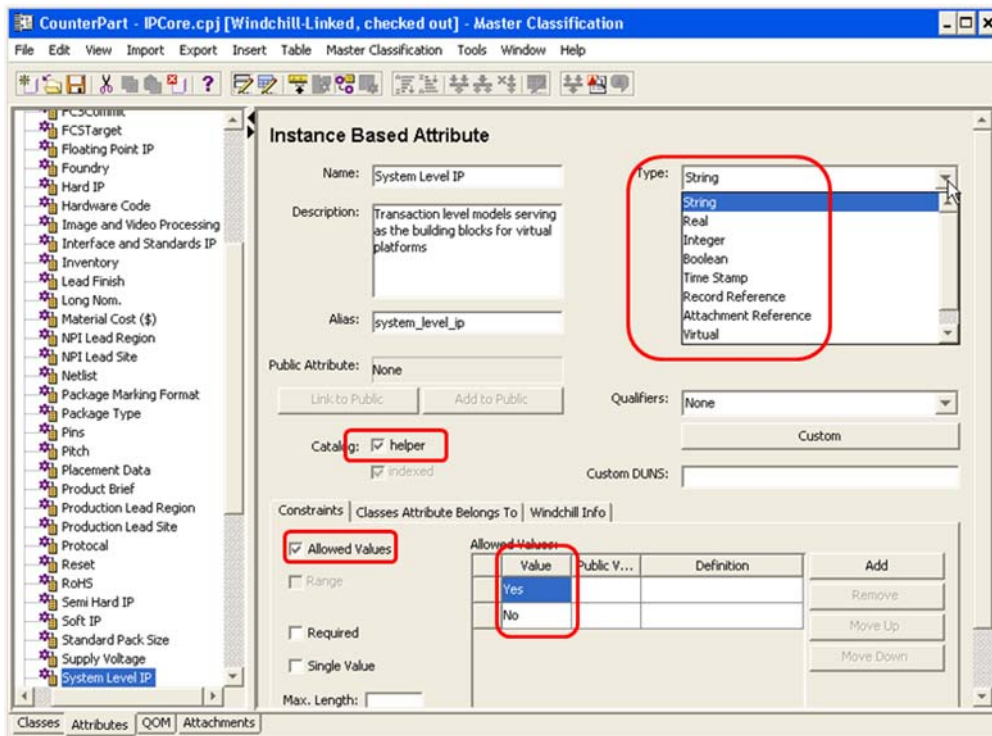


## Defining Attribute Behavior

With the Classes navigation tab selected, double click the Parent Node of the classification you created. Listed will be the Attributes for the Children of the Parent node. Select the Attribute you wish to define and select “Go to Attribute” from the operation selection on the right side.



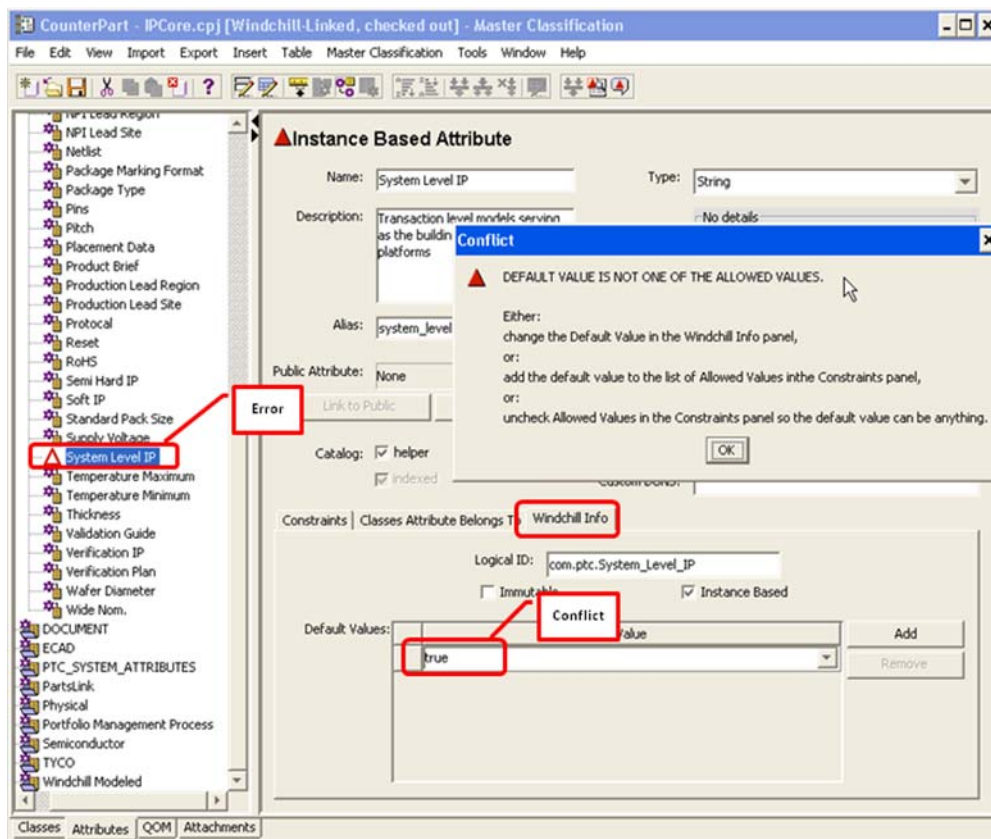
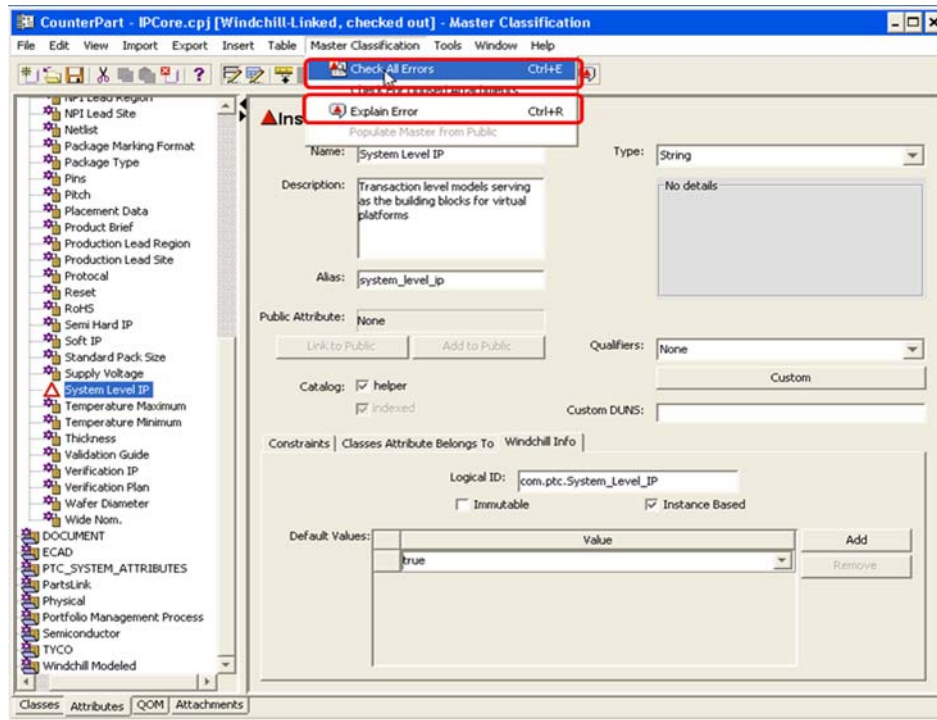
Selecting the “Go to Attribute” will display the window allowing the behavior of the Attribute to be configured.



Repeat the process until all the searchable attributes have been populated under their appropriate node. Note: You can create all the attributes for a node and Push them to the children.

## Verify your work & Check-in

Select Master Classification/Check for Errors from the Main menu. Select Explain Error if needed after highlighting the error.



The allowed value for the Under the Windchill Info Tab was set to “true”. This conflicts with the Allowed Values set on my Constraints tab which allowed only a “Yes” or “No”.

Once the correction was made the error disappears. It is CAP sensitive.

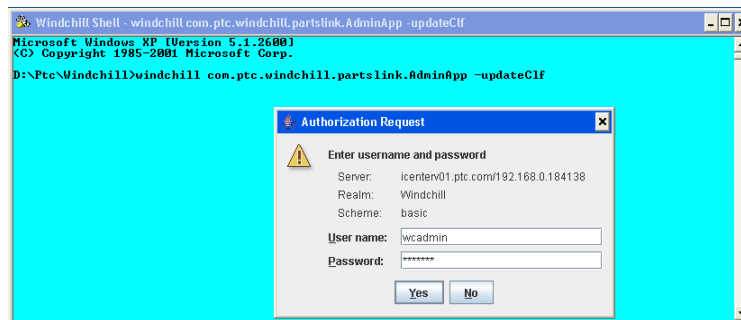
## Check-in and Update the Classification in PartsLink

Select Tools/Windchill Classification Administrator/ Check In.

Add the Image files to ...\\Windchill\\codebase\\netmarkets\\jsp\\websearch\\attachments\\clf

Run the following from a Windchill Shell:

- **‘windchill com.ptc.windchill.partslink.AdminApp updateClf’**
  - wcadmin/wcadmin
    - This can take a few minutes
  - This command updates the classifications within PartsLink

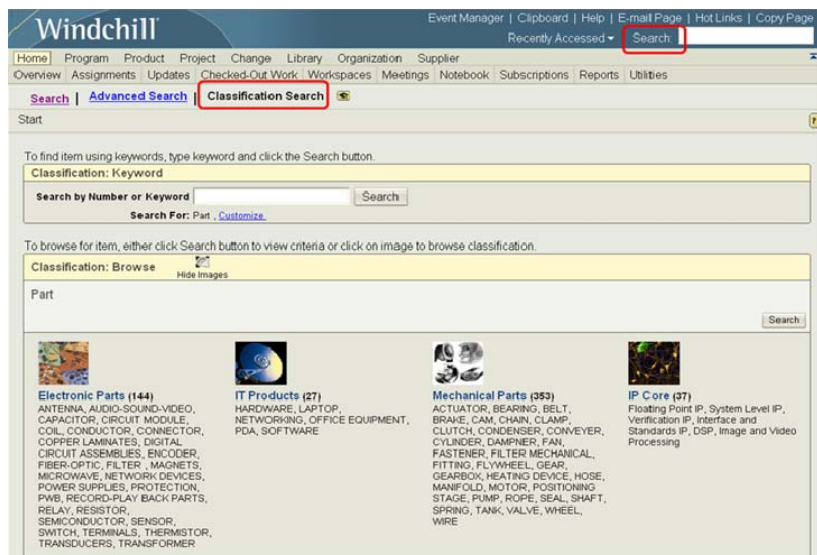


## End Result

A searchable structure for component reuse

In the example, the IP components need to be associated to the correct classification node.

There are other methods to create, import and export these classifications which can make the classification process even easier.



[Back To Top](#)

## Announcements

### PTC Tips & Techniques Newsletter Archives

Did you miss an issue? Can't find that awesome technique you read about? Fear not, you can click on the link below and go through our Customer PTC E-Newsletter archives.

[Customer Care Zone](#)

### PTC Tips & Techniques Webcasts: Work Smarter. Not Harder.

Click below to see regularly scheduled Tips & Techniques technical Webcasts that are designed to provide you with the most popular time-saving tricks that Pro/ENGINEER users of all skill levels will find useful. Get more out of your maintenance dollars!

[Tips & Techniques: Work Smarter Not Harder!](#)

### Special Hardware offers for PTC Customers

- <http://www.hp.com/go/ptc>
- <http://www.hp.com/go/ptcworkstation>

### PTC Sponsored Events

- <http://www.ptc.com/company/news/events/index.htm>

Explore what is new with the Pro/ENGINEER Wildfire family!

<http://www.ptc.com/go/showcase>

Connect with PTC using the latest Social Networking resources:



Also visit <http://social-product-development.blogspot.com/>

### **E-PROFILES IS HERE!!**

We have been eagerly anticipating the debut of the new electronic version of Profiles Magazine and now it is here! This new web site will supplement the print edition of the magazine and will provide new useful features not feasible with paper media. e-Profiles will provide you with 24x7, worldwide access to key information previously available exclusively in the print version. "Tips & Tricks," a popular feature pioneered by Pro/USER, has also moved to the web and will be expanded as the site matures.

Please take a few minutes to check out this new web site. We don't think you will be disappointed.

<http://profilesmagazine.com/>



---

---

[Back To Top](#)

## Upcoming Events & Training Class Schedules

Upcoming, 2009                      Your local Pro/Engineer User Groups  
<http://www.ptcuser.org/rugs/>

June 7 – 10, 2009                      Orlando, FL USA  
PTC/USER World Event  
<http://www.ptcuser.org/>

### Events

Our seminars and conferences seek to provide you with relevant information regarding product development trends in your industry as well as innovative software learning experiences. Think of them as a constructive day off where you can share experiences and swap ideas with your peers.

If you can't manage to get away, we'll bring it to you. Check back often for regularly scheduled live webcast events.

[You're Invited to Attend...](#)

Please visit the [PTC Education Services](#) website for the latest training information including course descriptions, schedules, locations, and pricing.

- Attend a course at any PTC Center and receive a **free** copy of Pro/ENGINEER Wildfire Student Edition!

<http://www.ptc.com/services/edserv/index.htm>

### Live Instructor-Lead Virtual PTC Training Courses

Virtual Classrooms provide interactive learning with a trained PTC instructor in convenient and manageable sessions that last approximately 4 hours over a series of days. It's easy to join a class right from your desk using a phone or voice-over IP technology.

Sessions are performed just like a traditional ILT (including interactive exercises where you and the instructor can work on lab exercises together) and feature some of our most popular ILT courses. These sessions cover the exact same material as the traditional ILT in-center courses. Also look for some of our most frequently requested mini-topics delivered in the same format that are only an hour - two hours in duration.

If you have any questions about these sessions or would like to see getting other courses, not on this list, on the schedule please feel free to contact me for more details. They are a great way to bring training to you without you having to worry about location or being out from work for long stretches.

You can register for these sessions just as you would for any normal ILT class either by:

1. calling order admin at <http://www.ptc.com/services/edserv/training/registra.htm> or
2. you can go to PTC University directly at <http://www.ptc.com/learning> and submit a registration request directly. All you have to do is search the catalog by typing in “virtual” in the search field and you will see a listing.

## PTC

**Note:** This PTC E-Newsletter will continue to be used for the following:

- 1) Inform you on events related to PTC products (user groups, conferences, training schedules, etc.)
- 2) Educate you on solutions that are available at PTC
- 3) Tips & Techniques using PTC Products

**Note:** These messages are compiled in the local PTC office and will be distributed via e-mail.

[Back To Top](#)