



new!

PTC Product Focus: **A) [Using Pro/ENGINEER and Mathcad to Work Smarter](#)**

B) [PTC's Portfolio Management Solution](#)

new!

Tips of the Month: **A) [Bringing Your Skeletons to Life](#)**

B) [CAD Document Attachments and Managing Instance Accelerator Files](#)

Announcements: [Most Recent Announcements](#)

Upcoming Events & Training Schedule: [Events & Training Schedule](#)

PTC Product Focus

Using Pro/ENGINEER and Mathcad to Work Smarter

[Click Here To View](#)

[Back To Top](#)

PTC Product Focus

PTC's Portfolio Management Solution

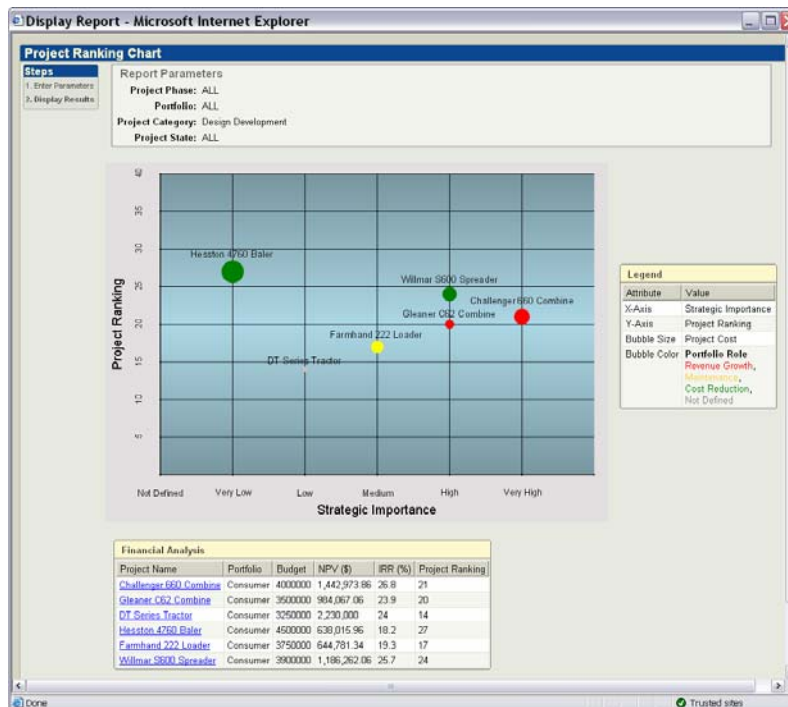
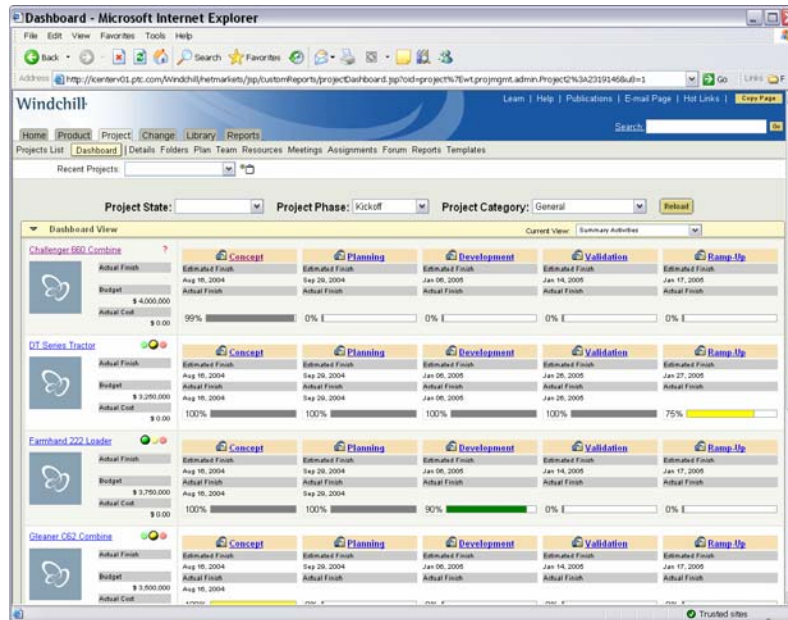
PTC's Portfolio Management solution enables companies to effectively manage product development projects across the product lifecycle, from concept to release, for optimal business results.

PTC's Portfolio Management solution leverages and extends the superior collaborative project management capabilities of PTC's Windchill® ProjectLink™, an industry-proven solution that enables project teams to efficiently complete the best products on time and on budget. In addition, PTC's Portfolio Management is a packaged solution, which means PTC can make its strategic capabilities available to you quickly, in just a matter of weeks.

A Key Requirement of PLM

According to Gartner Research, "Portfolio management is fast becoming a key requirement in PLM for getting products to market quickly and cost-effectively." Why? Today, a company's commercial success depends largely on its ability to establish and execute an optimal product development investment strategy, one that leverages and fosters innovation. PTC's Portfolio Management solution helps you maximize the value of your product portfolio by giving you the visibility and control you need to ensure

appropriate funding allocations and resource assignments. By delivering proven business metrics, such as net present value and internal rates of return, coupled with a configurable scorecard approach, Portfolio Management enables managers to continuously measure the costs, risks, and payoff potential for every emerging product. With tools such as easy-to-read data 'dashboards', up-to-the-minute status reports, and detailed analysis, you can select and 'nurture' the very best of your emerging products; putting resources solely behind the truly promising initiatives.



Track status at anytime with the portfolio "dashboard"; Use bubble charts to assess performance and risk.

Efficient Project Collaboration

PTC's Portfolio Management solution provides exceptional project collaboration tools that project teams need to effectively collaborate throughout product development, and efficiently execute the project plan. Because the solution adds value to product development teams, your engineers and designers will use it in their daily work, thus keeping project information current. In this way, portfolio decisions are based on current data; there's no need to enter project information separately. The result: a solution that makes it easy to determine the right projects, and then execute those projects the right way.

Key Benefits

Total pipeline visibility

When managing a large portfolio of product development projects, it's difficult to ascertain which products show true promise and which should be fixed or canceled. With clear visibility of performance and resource allocations across the pipeline, you can make better that are better aligned with corporate goals. By providing you with both 'big picture' and 'drill down' viewing into projects, PTC's Portfolio Management solution gives you total control over your project portfolio, so you can reallocate resources as necessary, for superior business results.

Focus on the winners

With the intelligence and confidence you derive from PTC's Portfolio Management solution, it's easy to separate the 'winners' from the 'losers', and objectively make the tough 'go' or 'no-go' decisions that drive growth and profits. With more precisely targeted resource allocation, your business saves money by eliminating projects with little or no chance of success, and boosts revenue by launching more products that have a solid chance of becoming profitable.

Maximizing portfolio value

Using proven business metrics, PTC's Portfolio Management solution continuously measures the costs, risks, and payoffs associated with each project in your portfolio. It gives you the power to track and optimize performance and attractiveness factors such as technical feasibility, market potential, financial reward, product complexity, and strategic fit. With this valuable information, in hand, you can easily balance risk and rewards across your whole product development portfolio, and maximize the likelihood of broad-based market and financial success.

Quick Start Implementation Approach

PTC consultants use a proven, standardized implementation approach that will have PTC's Portfolio Management solution installed, configured, personalized, and available to your users and managers in a matter of a few weeks. Our knowledgeable, experienced, and skilled consultants build on PTC's leading technology to design and deliver a solution tailored to your specific needs.

[Back To Top](#)

Tips of the Month

Bringing Your Skeletons to Life

[Click Here To View](#)

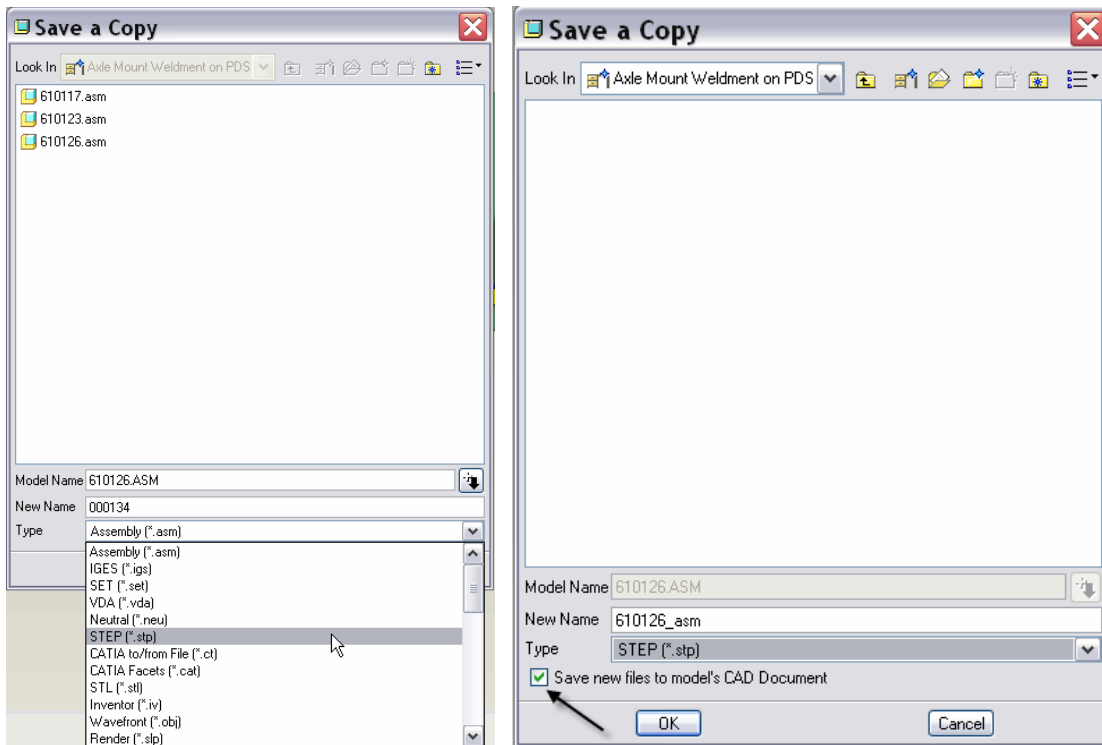
[Back To Top](#)

Tips of the Month

CAD Document Attachments and Managing Instance Accelerator Files

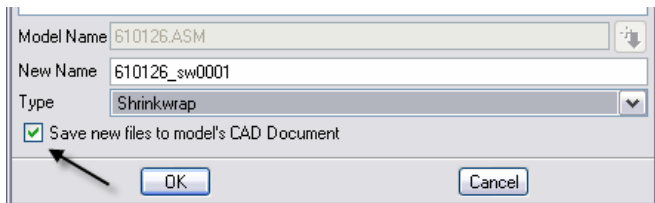
PDMLink allows you to store attachments to CAD Documents. Attachments are considered secondary content. The Pro/ENGINEER model files are considered the primary content of a CAD Document. Attachments are useful when you create different representations of your CAD model and tie those to the CAD Model. Attachments are linked directly to the CAD model's CAD Document and the specific version and iteration that it was created from. It then becomes available to anyone who has access to the CAD Document. You won't have to create a new one every time you are asked or have to manage them on your workstation.

It is easy to add an attachment to your CAD Document right from Pro/ENGINEER. With the model in your workspace and open in Pro/ENGINEER select File / Save a Copy. Then select the file type you wish to create. In the following figure STEP was selected.



If you want the file to be saved as an attachment, check the box next to “Save new files to model’s CAD Document”. When you select OK, if the CAD Document is not checked out you will be prompted to do so, since you will be modifying it.


You can also add other file types. For instance you may want to add a Shrinkwrap to be sent to a supplier or customer.



After check in the CAD Document properties page will show the two files in the attachments table. They are available for downloaded directly from this page.

Details of 610126.asm


WELDMENT, MAIN AXLE MNT



Organization ID: OEM
Responsible Product: Challenger 660 Combine
Number: 610126.ASM
Name: WELDMENT, MAIN AXLE MNT
File Name: 610126.asm
Version: A.2
Instance Type:
General Status: Checked in
Authoring Application: Pro/ENGINEER
Location: /Challenger 660 Combine/Steering Axle
Description:

Team Name: 610126.asm - WELDMENT, MAIN AXLE MNT A4755
State: In Work - Under Review - Released - Obsolete
Created: 10 Feb 04 15:37
Created By: Dave Design Engineer
Updated By: Dave Design Engineer
Last Updated: 14 Feb 07 15:03
Dependencies Complete?: true

Content





File Name	Status	Content Category	File Size	Last Updated	Updated By
 610126.asm	Current	Pro/ENGINEER UGC	311.73 KB	14 Feb 07 14:55	Dave Design Engineer

Attachments

File Name	Status	Download Automatically	Content Category	File Size	Last Updated	Updated By
<input type="checkbox"/> 610126_asm.stp	Current	No	Export	927.85 KB	14 Feb 07 15:03	Dave Design Engineer
<input type="checkbox"/> 610126_sw0001.prt	Current	No	Export	62.37 KB	14 Feb 07 15:03	Dave Design Engineer

Notice the status is Current. This will indicate to the viewer that the attachment is up-to-date. If it was not, the status would be Outdated.

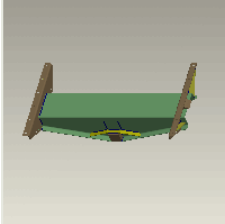
If you were wondering what would happen if you did not check the check box, the file would be saved as CAD Document if you selected the workspace as the location. You could also save it to the file system.

<input type="checkbox"/>	*+ [CAD icon]	610126_asm.stp	 	Local content modified		14 Feb 07 23:10	610126_asm.stp
<input type="checkbox"/>	*+ [CAD icon]	610126_sw0001.prt	 	Local content modified		14 Feb 07 23:09	610126_sw0001.prt

When you modify the Pro/ENGINEER model, the attachments will become outdated. This status will show on the workspace details page of the CAD Document.

[Go to Details of 610126.asm](#)

WELDMENT, MAIN AXLE MNT Edit Properties Go



Organization ID: OEM
Responsible Product: [Challenger 660 Combine](#)
Number: 610126.ASM
Name: WELDMENT, MAIN AXLE MNT
File Name: 610126.asm
Version: A.2
Instance Type: Not a family instance or generic
Status: Workspace Local Copy([Details of original](#))
General Status: Checked out by you
Modified Status: Modified Locally
Authoring Application: Pro/ENGINEER
Location: [/dave/Axle Mount Weldment](#)
Description:

Team Name: [610126.asm - WELDMENT, MAIN AXLE MNT.A4755](#)
State: In Work - Under Review - Released - Obsolete
Created: 10 Feb 04 15:37
Created By: [Dave Design Engineer](#)
Updated By: [Dave Design Engineer](#)
Last Updated: 14 Feb 07 15:07
Dependencies Complete?: true

General —

Workspace Related Parts
 Workspace Structure
 Workspace Used By
 Workspace References
 Workspace Referenced By
 Workspace Family

Content						
File Name	Status	Content Category	File Size	Last Updated	Updated By	
610126.asm	Current	Pro/ENGINEER UGC	321.31 kb	14 Feb 07 15:10	Dave Design Engineer	

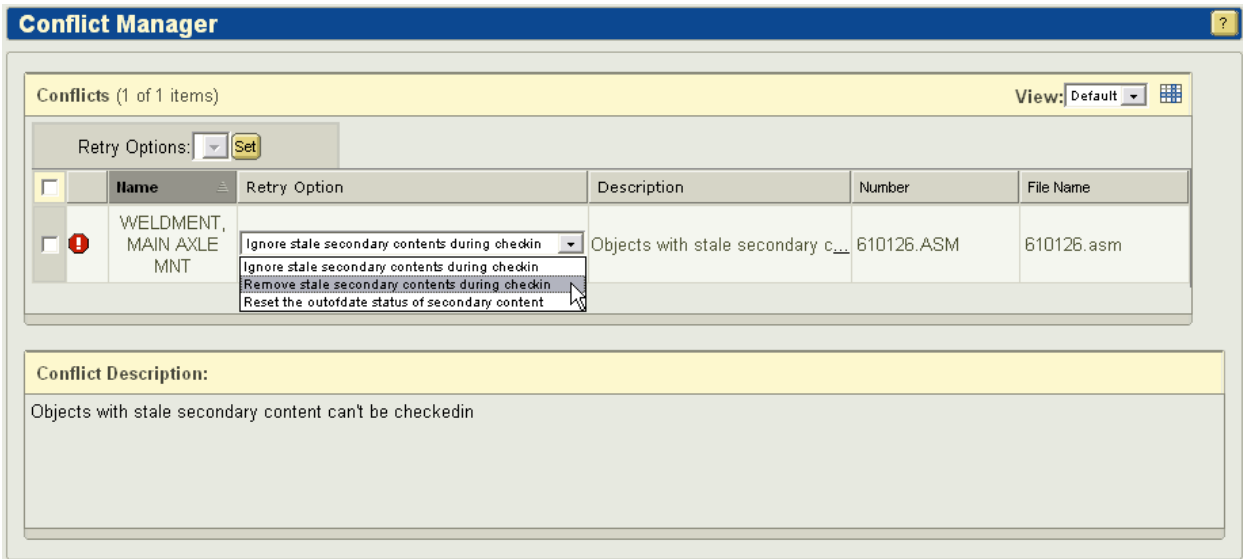
Attachments						
File Name	Status	Download Automatically	Content Category	File Size	Last Updated	Updated By
610126_asm.stp	Outdated	No	Export	927.84 kb	14 Feb 07 15:07	Dave Design Engineer
610126_sw0001.prt	Outdated	No	Export	62.36 kb	14 Feb 07 15:07	Dave Design Engineer

This status can also be used as a gatekeeper to remind you that they need to be updated, removed or confirmed to be still valid.

There are two preferences that control the behavior of the attachments. These preferences are located in the contentcat.ini file, found in <Windchill>/codebase/com/ptc/windchill/cadx/cfg/default/ folder.

The behavior for each type of file, Content Category, that can be added as an attachment can be set in this file. Each category has the two preferences; <secondary_content_category>.markoutofdate and <secondary_content_category>.download. The markoutofdate preference, when set to true, will mark an attachment Outdated if the CAD Document is iterated, revised or if the state changes. The download preference, when set to true, will automatically download the attachment when the CAD Document is added to a workspace.

Also, if the markoutofdate option is set to true, then you will be reminded to update the attachment on check in, if the model has changed but the attachments were not updated. You can update the attachments and check in again. Otherwise the conflict can be overridden from the Event Console with one of three options.

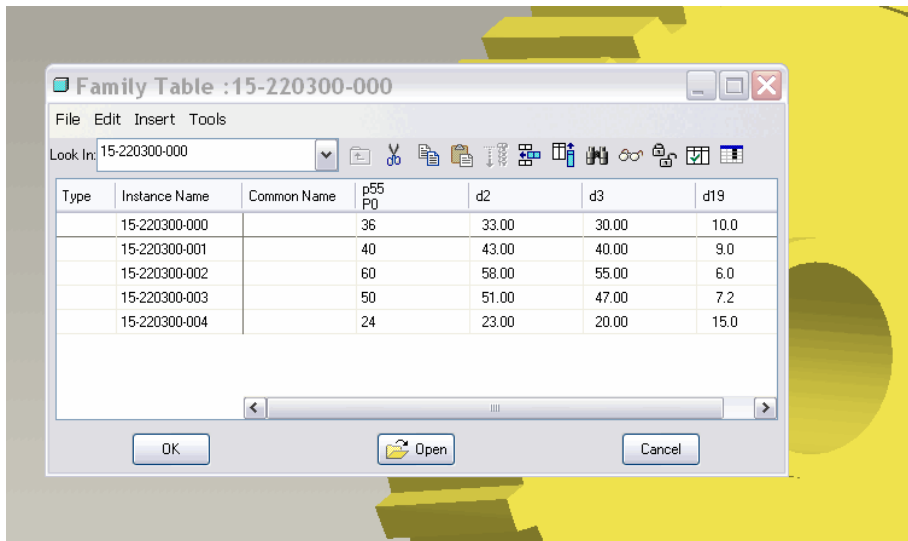


- “Ignore stale secondary contents during check in”
This will check in the CAD Document and keep the Outdated attachments. Use this if you plan to change the model again and the updated attachments aren’t needed in the mean time.
- “Remove stale secondary contents during check in”
This will check in the CAD Document and remove the attachments from this iteration. Use this if you plan to change the model again and the updated attachments aren’t needed in the mean time but you don’t want the outdated attachments on the CAD Document.
- “Reset the outofdate status of secondary content”
This will set the status to Current. Use this if the changes to the model don’t impact the attachments.

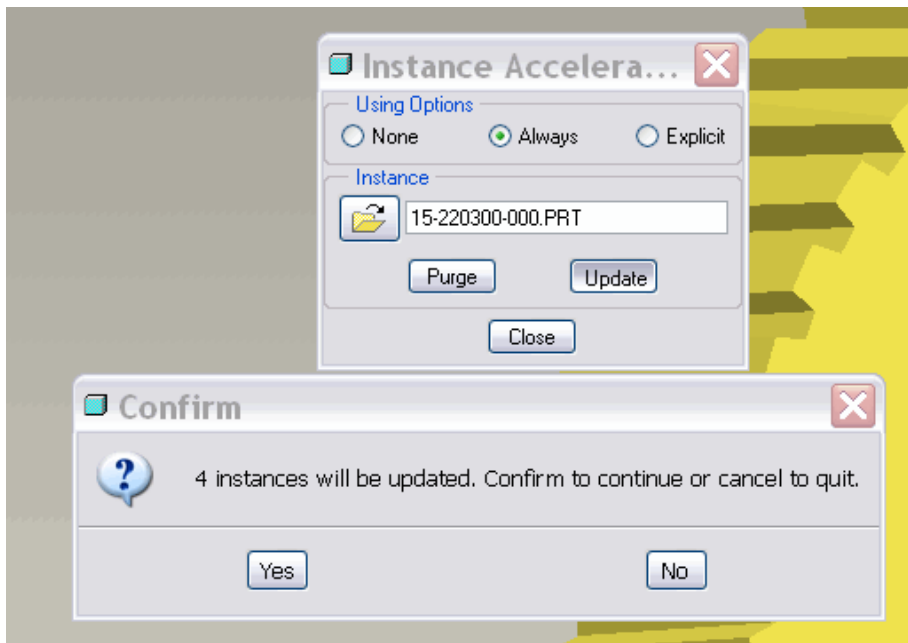
Managing Instance Accelerator Files

You can reduce much of the time required to retrieve an instance of a part or assembly from disk by saving the instance in a special file called an instance accelerator file. Each instance is saved in its own unique accelerator file, named instancename.xpr for part instances and instancename.xas for assembly instances. These files can also be used in PDMLink and are managed as CAD Document Attachments. You simply follow the same process you use today to create and update the instance accelerator files.

As an example, you create and verify a family table.

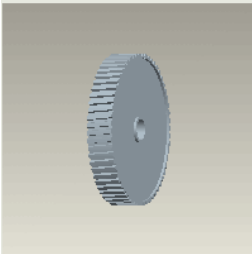


Then select File / Instance Operations and Update from the Instance Accelerator Options dialog.



Each instance will now have an accelerator file as an attachment.

15-220300-002.prt




Organization ID: OEM
Library: Standard Parts
Number: 15-220300-002.PRT
Name: 15-220300-002.prt
File Name: 15-220300-002.prt
Version: A.1
Instance Type: Instance
General Status: Checked in
Authoring Application: Pro/ENGINEER
Location: /Standard Parts
Description:

Team Name: 15-220300-002.PRT (OEM) - 15-220300-002.prt 41868
State: In Work - Released - Cancelled
Created: 14 Feb 07 16:52
Created By: Dave Design Engineer
Updated By: Dave Design Engineer
Last Updated: 14 Feb 07 16:52
Dependencies Complete?: true

General — ?
 Related Parts
 Associated Changes
 Structure
 Used By
 References
 Referenced By
 Family
 Baselines
 Versions

Attachments ?

File Name	Status	Download Automatically	Content Category	File Size	Last Updated	Updated By
 15-220300-002_xpr	Current	Yes	Instance Accelerator File	776.75 KB	14 Feb 07 16:52	Dave Design Engineer

Attributes ?

The status will be set to Current and the attachment will be downloaded automatically when the instance is downloaded to a workspace. Instance Accelerator Files are set to download automatically by default.

When you update your accelerator file, the attachment will be updated.

[Back To Top](#)

Announcements

Educational Resource Library

Learn things you always wanted to do - but didn't know you could.

This one stop educational resource library will help you learn more about PTC Solutions and provide you with technical materials developed by the product experts to help you become more productive.

Get tutorials, how-to videos and expert advice for:

- Pro/ENGINEER
 - Conceptual and Industrial Design
 - Detailed Design
 - Simulation/Analysis
 - Production
 - Design Collaboration
- Windchill PDMLink
- Windchill ProjectLink
- Pro/INTRALINK
- PTC Online Tools

Check out the [Educational Resource Library](#) today.

PTC Tips & Techniques Newsletter Archives

Miss an issue! Can't find that awesome technique you read about? Fear not, you can click on the link below and go through our Customer PTC E-Newsletter archives.

[Click Here To Access](#)

It's better than finding the Covenant of the Ark!

PTC Tips & Techniques Webcasts: Work Smarter. Not Harder.

Click below to see regularly scheduled Tips & Techniques technical Webcasts that are designed to provide you with the most popular time-saving tricks that Pro/ENGINEER users of all skill levels will find useful. Get more out of your maintenance dollars!

[Tips & Techniques: Work Smarter Not Harder!](#)

E-PROFILES IS HERE!!

We have been eagerly anticipating the debut of the new electronic version of Profiles Magazine and now it is here! This new web site will supplement the print edition of the magazine and will

provide new useful features not feasible with paper media. e-Profiles will provide you with 24x7, worldwide access to key information previously available exclusively in the print version. "Tips & Tricks," a popular feature pioneered by Pro/USER, has also moved to the web and will be expanded as the site matures.

Please take a few minutes to check out this new web site. We don't think you will be disappointed.

<http://profilesmagazine.com/>

[Back To Top](#)

Upcoming Events & Training Class Schedules

Upcoming, 2007 Your local Pro/Engineer User Groups
<http://www.ptcuser.org/rugs/>

June 3 - 6, 2007 Tampa, Florida
PTC/USER International Conference
<http://www.ptcuser.org/>

Events

Our seminars and conferences seek to provide you with relevant information regarding product development trends in your industry as well as innovative software learning experiences. Think of them as a constructive day off where you can share experiences and swap ideas with your peers.

If you can't manage to get away, we'll bring it to you. Check back often for regularly scheduled live webcast events.

[You're Invited to Attend...](#)

Please visit the [PTC Education Services](#) website for the latest training information including course descriptions, schedules, locations, and pricing.

- Attend a course at any PTC Center and receive a **free** copy of Pro/ENGINEER Wildfire Student Edition!

<http://www.ptc.com/services/edserv/index.htm>

Live Instructor-Lead Virtual PTC Training Courses

Virtual Classrooms provide interactive learning with a trained PTC instructor in convenient and manageable sessions that last approximately 4 hours over a series of days. It's easy to join a class right from your desk using a phone or voice-over IP technology.

Sessions are performed just like a traditional ILT (including interactive exercises where you and the instructor can work on lab exercises together) and feature some of our most popular ILT courses. These sessions cover the exact same material as the traditional ILT in-center courses. Also look for some of our most frequently requested mini-topics delivered in the same format that are only an hour - two hours in duration.

If you have any questions about these sessions or would like to see getting other courses, not on this list, on the schedule please feel free to contact me for more details. They are a great way to bring training to you without you having to worry about location or being out from work for long stretches.

You can register for these sessions just as you would for any normal ILT class either by:

1. calling order admin at <http://www.ptc.com/services/edserv/training/registra.htm> or
2. you can go to PTC University directly at <http://www.ptc.com/learning> and submit a registration request directly. All you have to do is search the catalog by typing in “virtual” in the search field and you will see a listing.

PTC

Note: This PTC E-Newsletter will continue to be used for the following:

- 1) Inform you on events related to PTC products (user groups, conferences, training schedules, etc.)
- 2) Educate you on solutions that are available at PTC
- 3) Tips & Techniques using PTC Products

Note: These messages are compiled in the local PTC office and will be distributed via e-mail.

[Back To Top](#)