



new!

PTC Product Focus: A) [What the Heck is Intent Select?](#)

B) [Windchill Aerospace & Defense Module](#)

new!

Tips of the Week: A) [Adding Cost to BOM's and Getting a Total Cost](#)

B) [Viewing Heterogeneous CAD Data w/ Windchill ProductView](#)

Announcements: [Most Recent Announcements](#)

Upcoming Events & Training Schedule: [Events & Training Schedule](#)

PTC Product Focus

What the Heck is Intent Select?

[Click Here To View](#)

[Back To Top](#)

PTC Product Focus

Windchill Aerospace & Defense Module

The Windchill Aerospace & Defense Module is an optional add-on module for [Windchill PDMLink](#) that was developed to meet the unique needs of the global Aerospace & Defense (A&D) industry for traceability of highly complex product and program information across the program lifecycle.

Aerospace & Defense companies are commonly faced with information that is disconnected and spread across many organizations and facilities, making configuration management of their products an extremely laborious, error-prone and time-intensive process. The combination of Windchill PDMLink and Windchill Aerospace & Defense Module creates a solution that allows A&D manufacturers and government program offices to efficiently manage and securely share digital product and program information internally and externally with customers and suppliers

With the Windchill Aerospace & Defense Module, Windchill PDMLink now offers:

- Contract deliverables management (CDRLs and SDRs)
- Advanced serialized parts management with traceability
- Advanced effectivity management
- As-built / as-maintained configuration management
- Advanced change management processes

CDRLs and SDRLs

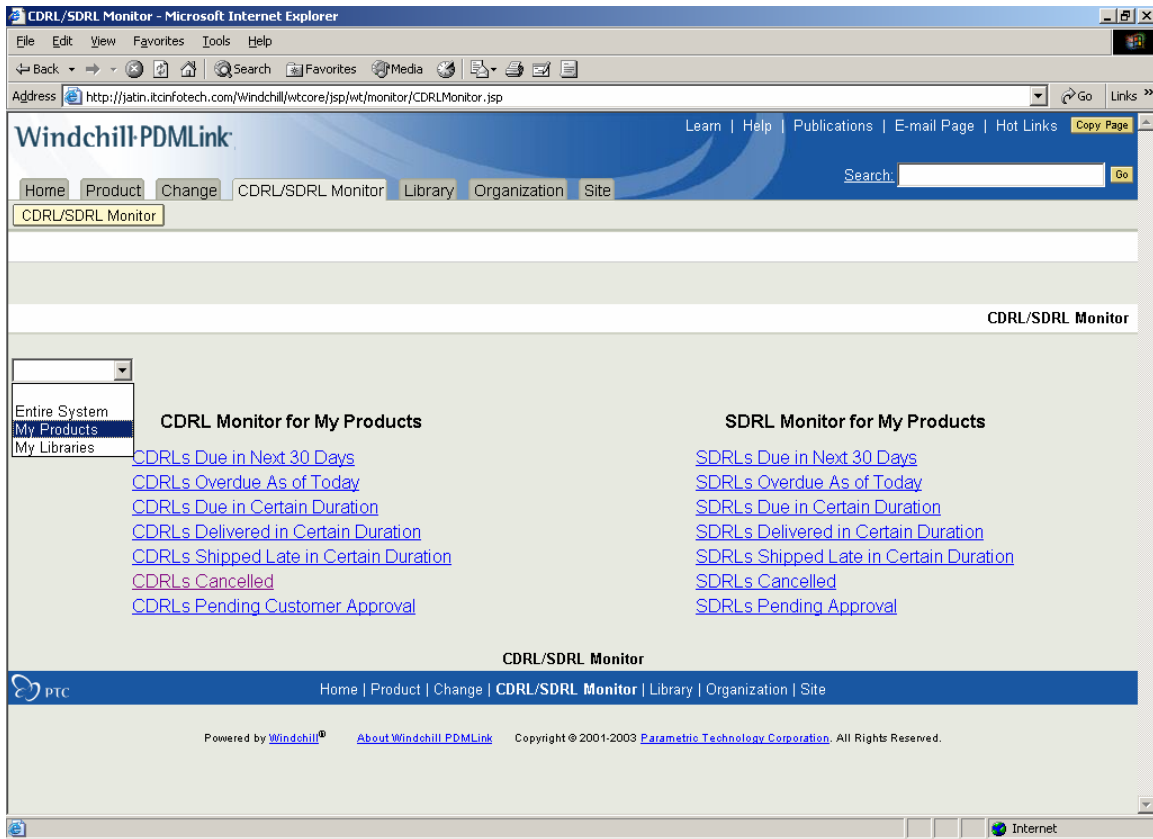
The Contract Delivery Requirements List (CDRL) and Supplier Delivery Requirements List (SDRL) creates and manages lists of A&D Template documents and models (deliverables). The A&D Module CDRL/ SDRL content is based on DoD Form 1423-1. CDRL attributes include Customer/ Supplier name, CAGE Code, Data Item Number, Data Item Description, number, data item name, scheduled and actual delivery dates, transmittal number, acceptance/ approval criterion, and customer/ supplier transmittal number. The A&D Module allows users to create Data Item Lists associated with each Customer/ Supplier along with schedule information (delivery dates). The objects will have a delivery date attribute. The CDRL/SDRL form provides for the attachment of deliverables and CDRL/SDRL data items may be associated to a Product.

CDRL/SDRLs are fully searchable and are managed objects with check-in, checkout, and tracking of data submittal capabilities. CDRL/SDRLs can be associated to a product configuration. A CDRL/SDRL item may be updated to change metadata or record a new delivery. Revision and iteration history of CDRL/SDRL items are maintained.

The screenshot shows a web browser window titled "Add CDRL/SDRL - Microsoft Internet Explorer". The main content area is a form titled "Add CDRL/SDRL". The form is organized into several sections:

- Top Left:** *CDRL ID: [text box] (optional: will auto-generate if no value is entered)
- Top Center:** * Organization ID: [text box] itcinfotech [Search button]
- Top Right:** Cdri Type: [dropdown] CDRL; Cdri Category: [dropdown] Configuration Management
- Middle Left:** *Contract Line Item Num: [text box]; System Item: [text box]; Data Item Num: [text box]; Authority [DID]: [text box]; DD 250 Req: [text box]; App Code: [text box]; Transmit Num: [text box]
- Middle Center:** Contract Num: [text box]; Title of Data Item [DID]: [text box]; Contract Ref: [text box]; Frequency: [text box]; Date As Of: [text box]; Customer Supplier Transmit Num: [text box]
- Middle Right:** Contractor: [text box]; Subtitle: [text box]; Requiring Office: [text box]; Date First Submit: [text box]; Date Subsequent Submit: [text box]
- Bottom Left:** Remarks: [text area]; Due Date: [text box]; Submitted Date: [text box]; Approved Date: [text box]
- Bottom Center:** Location: Autoselect Folder (/bond's product) Select Folder [dropdown]
- Bottom Right:** * Required Field; [OK] [Apply] [Cancel] buttons

(Fig. 1) CDRL/SDRL form



(Fig. 2) CDRL/SDRL Monitor.

Serialized Parts Management & Traceability

Trace Code identifies the traceability requirement of a component or assembly and is visible in the product structure detail information display. Trace Code is an optional attribute presented for each component in indented product structure displays and reports. Valid Trace Code values are S (serial number), X (serial number and lot number), L (lot number or date), or the default null (traceability is not required). Trace Code is a searchable attribute.

Subsequent traceability behaviors are based on the value of the trace code. Products and product structures are traceable, based on the value of the Trace Code, by the single Lot/Date Code attribute and/or the single Serial Number attribute.

Advanced Effectivity Management

Change effectivity is the process of implementing product or product structure changes while managing the traceability of products and or product structures. Schedule dates, inventory levels, or compulsory corrective actions may drive the changes.

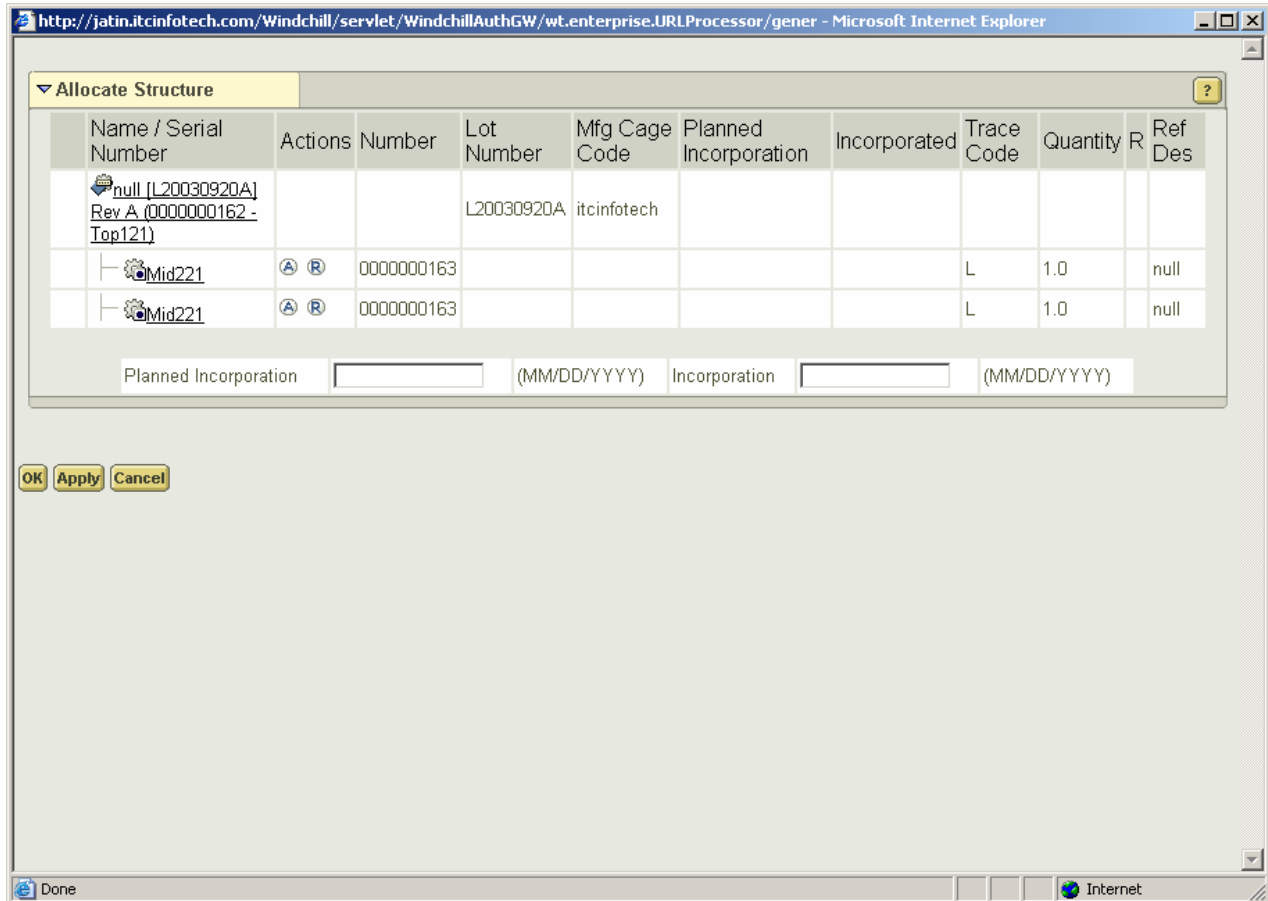
Individual traceable products (determined by the Trace Code) include Lot/Date Code and/or Serial Number for effectivity.

A product in an as-maintained configuration may be replaced by the same product with a different serial number without change to or loss of any other allocation information.

An Alternate Part may replace a part in an as-maintained configuration without change to or loss of any other allocation information maintained by the A&D Module system.

Advanced Configuration Management

Products and Product Structures can be created directly within the A&D Module environment or through the use of supported authoring applications such as ProENGINEER. Defining a product structure with the A&D Module is a top-down process. Defining configurations is a bottom-up process. The user has the choice of allocating and incorporating the serial number (SN), lot codes, or date codes while each configuration level is defined or to complete defining configurations and then begin at the lowest level configuration and complete the allocations for each configuration.



(Fig. 3) Allocating Product Structure.

With the introduction of the Windchill Aerospace & Defense Module for PDMLink, Aerospace & Defense industry users are now able to meet the complex requirements of their customers and improve their own product development processes by managing program information in the context of product lifecycle management.

[Back To Top](#)

Tips of the Week

Adding Cost to BOM's and Getting a Total Cost

[Click Here To View](#)

[Back To Top](#)

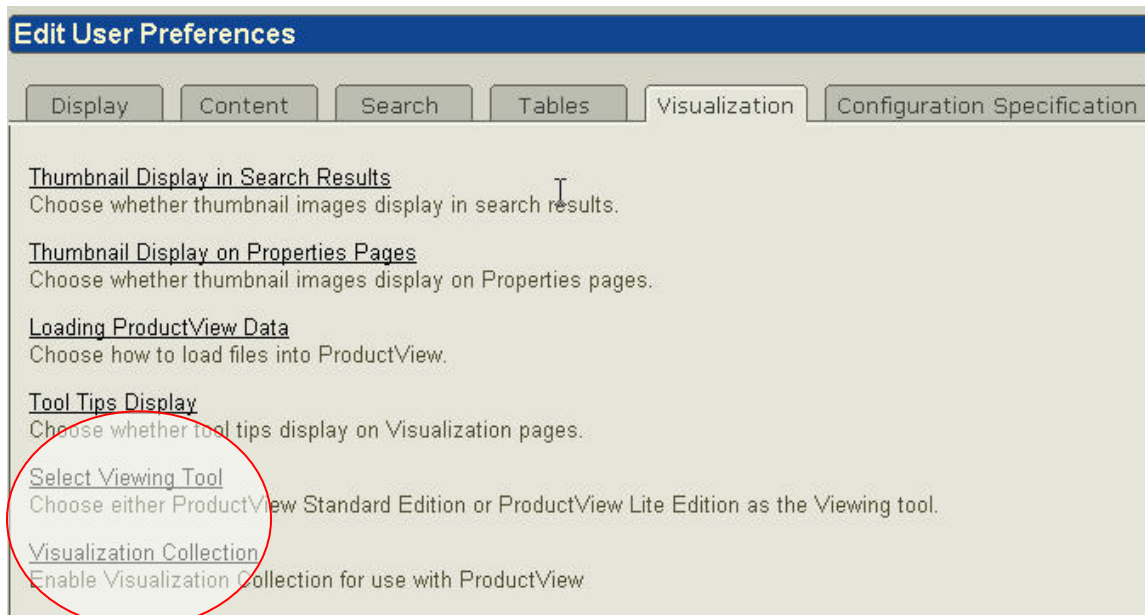
Tips of the Week

Viewing Heterogeneous CAD Data w/ Windchill ProductView

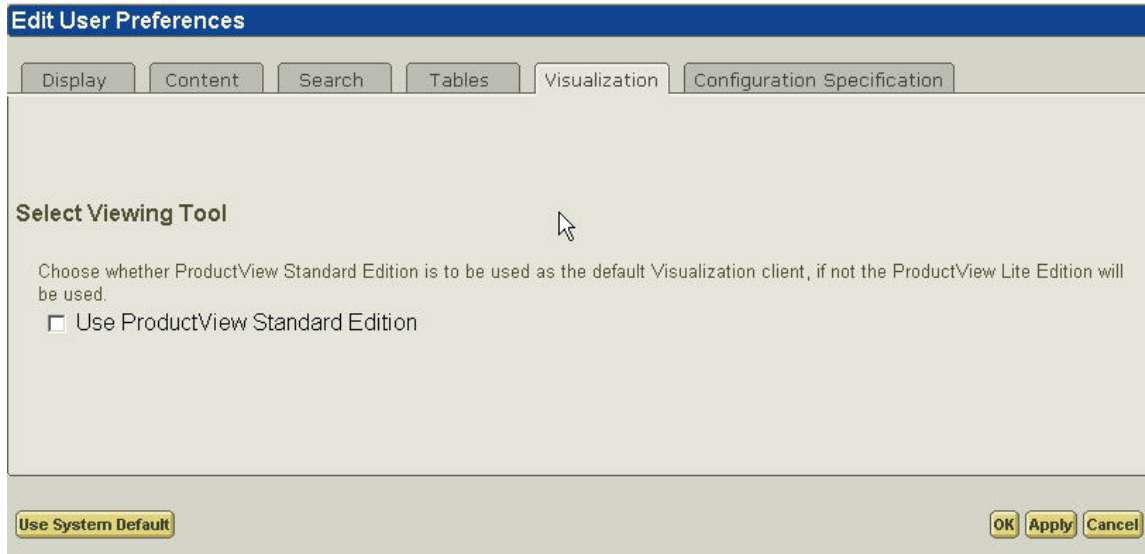
In today's global product development environment, it's not an uncommon requirement for design teams to visualize and collaborate with CAD models authored in a variety of CAD packages. Windchill provides this capability to users efficiently, directly from their desktop, utilizing the integrated ProductView tools. This accelerates the flow of critical design data to the team, significantly boosting productivity and maximizing the product development process.

To visualize heterogeneous CAD data, the Windchill Visualization Collection capability must be enabled. To verify or change your Visualization Collection preferences, select the **Preferences** link in Windchill Home → Utilities. In the Edit User Preferences Window, select the **Visualization** tab and then **Visualization Collection**. Ensure that the Visualization Collection is available for use.

If your MCAD modeling practices defines the creation of geometry and parts in a single global coordinate system, ProductView Lite Edition can be used, if not, the Standard Edition, which provides the mating capability must be used. To switch your preference for ProductView Standard or Lite, select the **Preferences** link in Windchill Home → Utilities. In the Edit User Preferences Window, select the **Visualization** tab and then **Select Viewing Tool**.

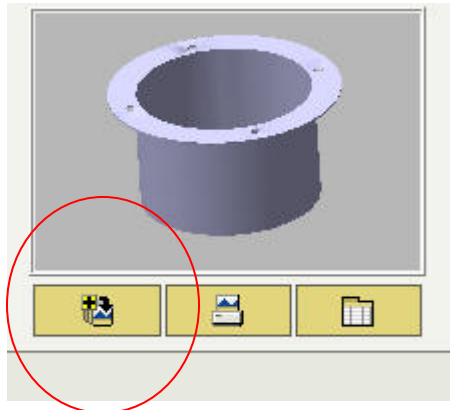


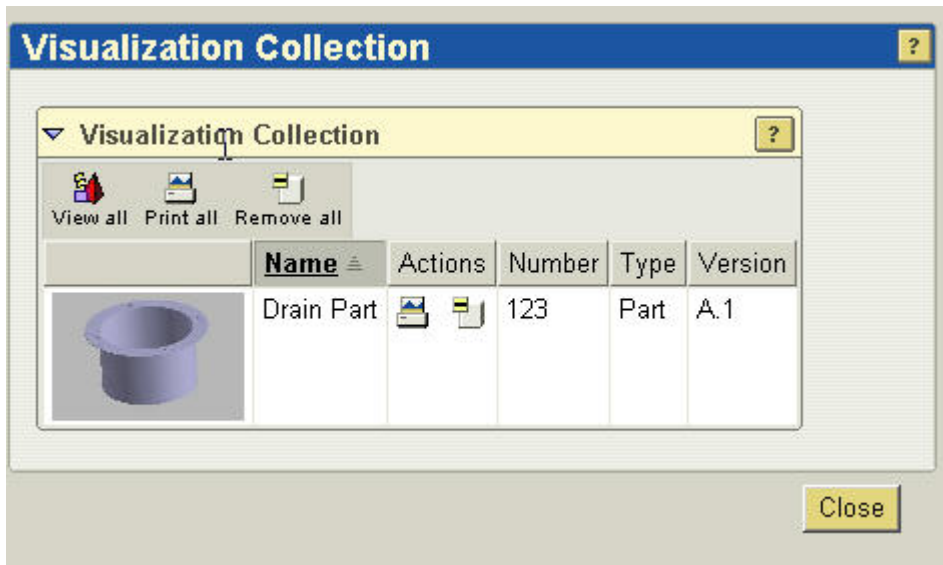
You can now select your ProductView viewing tool preference.



Once you have selected your viewing preferences, you can add your heterogeneous CAD data to a **Visualization Collection**.

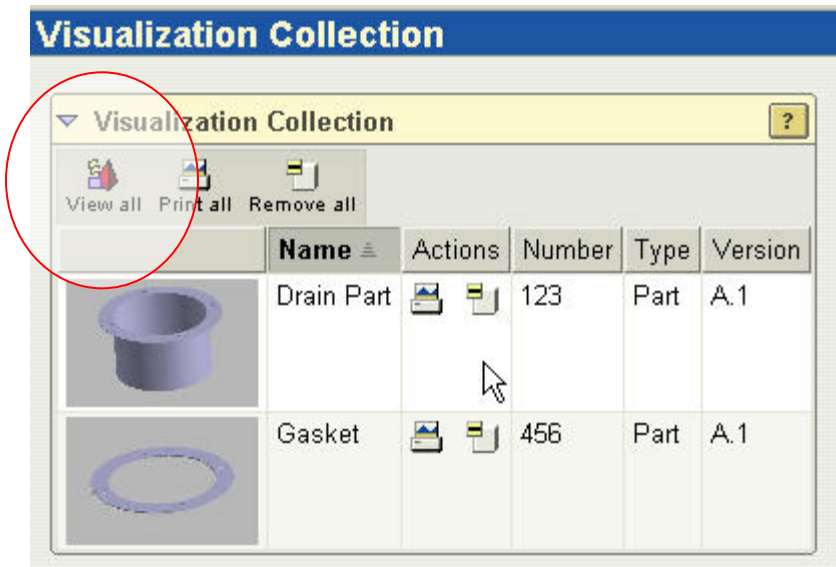
To add a model to the visualization collection, go to its Details page and select the **"Add to visualization collection"** icon just below the part's thumbnail.



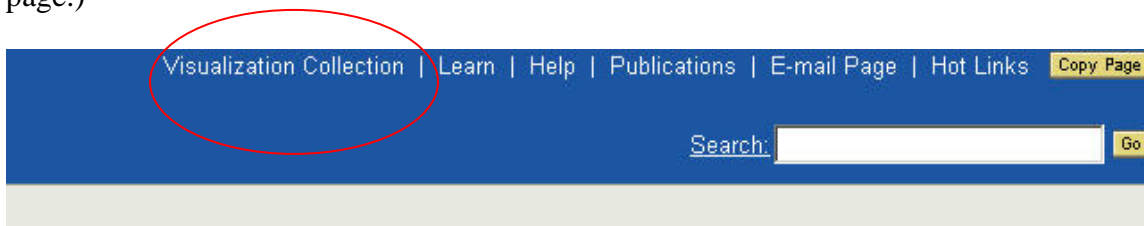


Repeat this process for any additional heterogeneous CAD data models you would like to view.

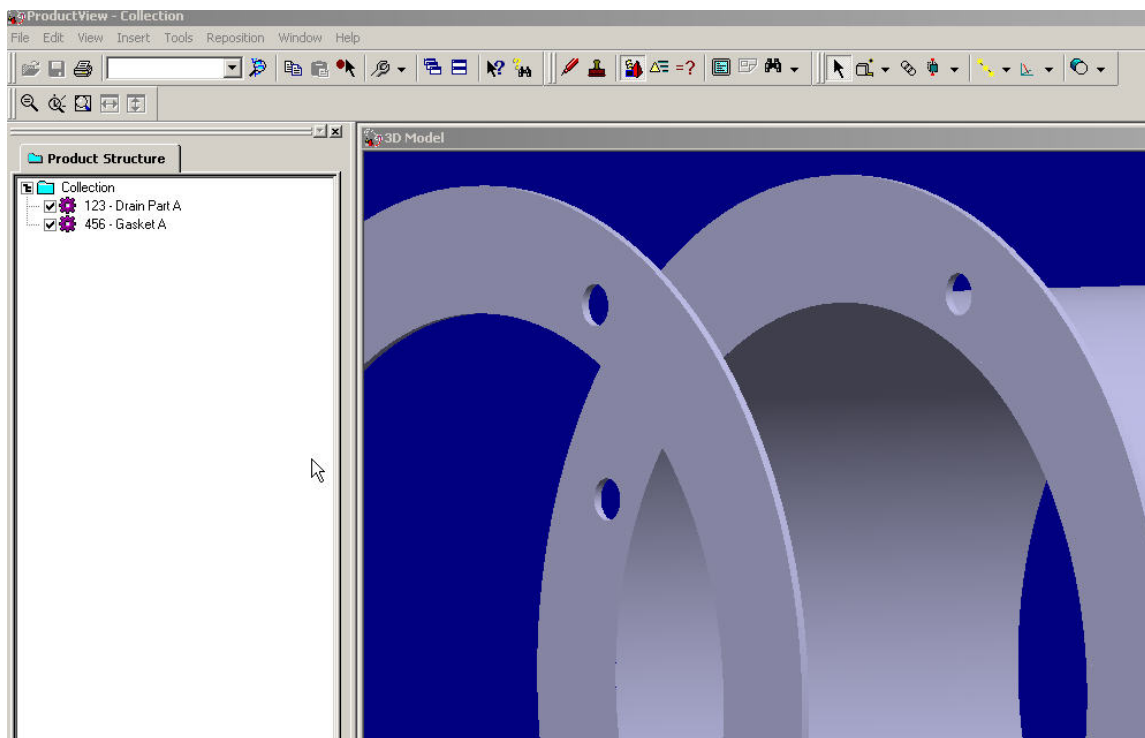
Once your collection is complete, select **View All** from the Visualization Collection.



(Note: You can always access your Visualization Collection from the top of any Windchill page.)



Now you can select your collection and visualize your heterogeneous CAD components. If a global coordinate system was not used, you may need to mate your components.



Mating Components

Use this option to mate the selected component with another component at a specified location and alignment. You must specify the points to mate to and from, along with offset values. There are two parts involved in mating: the movable part (indicated by a blue marker) and the fixed part (indicated by green marker).

To mate two components, follow these steps:

1. First, select the movable part(s).
2. Choose **Reposition > Mate Point to Point**. The Mate dialog box appears. The list of movable parts is shown in the Component box. You can add to this list by dragging other components from the Product Structure tree.
3. Specify a pick target menu option (**View > Pick target**). The option you specify will affect where the parts are mated. You can choose, for example, surface, curve, or point.
4. Next, specify the features you want to mate. These are specified in order - moveable part, fixed part, moveable, fixed, and so on. Click on a feature on the moveable part. A marker with a blue arrow is displayed. This is the primary mating point. Note: If you click on an existing marker (which will highlight it) and click the Tab key, the arrow direction will be reversed.
5. Click a point on the part to join the first part to - this will display a marker with a green arrow. The two arrows indicate the direction of alignment of the two mating points.
6. You can optionally specify X, Y, and Z offsets for the mating origin. The Distance offset can also be changed by dragging either of the colored arrows.
7. Click the Apply button on the Mate dialog box to join the components at the selected to and from points. You can also use the offset values in the Mate dialog box to specify values for the mating.

[Back To Top](#)

Announcements

Educational Resource Library

Learn things you always wanted to do - but didn't know you could.

This one stop educational resource library will help you learn more about PTC Solutions and provide you with technical materials developed by the product experts to help you become more productive.

Get tutorials, how-to videos and expert advice for:

- [Pro/ENGINEER](#)
 - [Conceptual and Industrial Design](#)
 - [Detailed Design](#)
 - [Simulation/Analysis](#)
 - [Production](#)
 - [Design Collaboration](#)
- [Windchill PDMLink](#)
- [Windchill ProjectLink](#)
- [Pro/INTRALINK](#)
- [PTC Online Tools](#)

Check out the [Educational Resource Library](#) today.

Live Instructor-Lead Virtual PTC Training Courses

PTC will be offering a series of Virtual Classrooms this quarter for you looking to save money (15% off ILT prices) and cut down on travel.

Virtual Classrooms provide interactive learning with a trained PTC instructor in convenient and manageable sessions that last approximately 4 hours over a series of days. It's easy to join a class right from your desk using a phone or voice-over IP technology.

Sessions are performed just like a traditional ILT (including interactive exercises where you and the instructor can work on lab exercises together) and feature some of our most popular ILT courses. These sessions cover the exact same material as the traditional ILT in-center courses. Also look for some of our most frequently requested mini-topics delivered in the same format that are only an hour - two hours in duration.

If you have any questions about these sessions or would like to see getting other courses, not on this list, on the schedule please feel free to contact me for more details. They are a great way to bring training to you without you having to worry about location or being out from work for long stretches.

You can register for these sessions just as you would for any normal ILT class either by:

1. calling order admin at <http://www.ptc.com/services/edserv/training/registra.htm> or
2. you can go to PTC University directly at <http://www.ptc.com/learning> and submit a registration request directly. All you have to do is search the catalog by typing in “virtual” in the search field and you will see a listing.

PTC Tips & Techniques Newsletter Archives

Miss an issue! Can't find that awesome technique you read about? Fear not, you can click on the link below and go through our Customer PTC E-Newsletter archives.

[Click Here To Access](#)

It's better than finding the Covenant of the Ark!

PTC Tips & Techniques Webcasts: Work Smarter. Not Harder.

Click below to see regularly scheduled Tips & Techniques technical Webcasts that are designed to provide you with the most popular time-saving tricks that Pro/ENGINEER users of all skill levels will find useful. Get more out of your maintenance dollars!

[Tips & Techniques: Work Smarter Not Harder!](#)

Hands-On Workshops

Experience and receive the next generation of CAD - Pro/ENGINEER Wildfire. During these workshops you can try it yourself to experience this breakthrough in simple, powerful, and connected in CAD software.

http://www.ptc.com/appserver/it/icm/cda/template_lib/events/online.jsp?im_dbkey=17625&im_language=en

PTC Sponsored Events

Click below to see PTC sponsored events:

<http://www.ptc.com/company/news/events/index.htm>

Thinking About Pro/ENGINEER Wildfire? Check this out.



<http://www.ptc.com/go/engineering/index.htm>

E-PROFILES IS HERE!!

We have been eagerly anticipating the debut of the new electronic version of Profiles Magazine and now it is here! This new web site will supplement the print edition of the magazine and will provide new useful features not feasible with paper media. e-Profiles will provide you with 24x7, worldwide access to key information previously available exclusively in the print version. "Tips & Tricks," a popular feature pioneered by Pro/USER, has also moved to the web and will be expanded as the site matures. Future plans include several foreign-language editions of Profiles for our many international readers. Currently, Profiles is printed in English and Japanese.

Please take a few minutes to check out this new web site. We don't think you will be disappointed.

<http://profilesmagazine.com/>

[Back To Top](#)

Upcoming Events & Training Class Schedules

Upcoming, 2005 Your local Pro/Engineer User Groups
<http://www.ptcuser.org/rugs/>

June 5 - 8, 2005 Orlando, FL
PTC/USER International Conference
<http://www.ptcuser.org/>

Please visit the [PTC Education Services](#) website for the latest training information including course descriptions, schedules, locations, and pricing.

- Attend a course at any PTC Center and receive a **free** copy of Pro/ENGINEER Wildfire Student Edition!

<http://www.ptc.com/services/edserv/index.htm>

Live Instructor-Lead Virtual PTC Training Courses

PTC will be offering a series of Virtual Classrooms this quarter for you looking to save money (15% off ILT prices) and cut down on travel.

Virtual Classrooms provide interactive learning with a trained PTC instructor in convenient and manageable sessions that last approximately 4 hours over a series of days. It's easy to join a class right from your desk using a phone or voice-over IP technology.

Sessions are performed just like a traditional ILT (including interactive exercises where you and the instructor can work on lab exercises together) and feature some of our most popular ILT courses. These sessions cover the exact same material as the traditional ILT in-center courses. Also look for some of our most frequently requested mini-topics delivered in the same format that are only an hour - two hours in duration.

If you have any questions about these sessions or would like to see getting other courses, not on this list, on the schedule please feel free to contact me for more details. They are a great way to bring training to you without you having to worry about location or being out from work for long stretches.

You can register for these sessions just as you would for any normal ILT class either by:

1. calling order admin at <http://www.ptc.com/services/edserv/training/registra.htm> or
2. you can go to PTC University directly at <http://www.ptc.com/learning> and submit a registration request directly. All you have to do is search the catalog by typing in "virtual" in the search field and you will see a listing.

PTC

Note: This PTC E-Newsletter will continue to be used for the following:

- 1) Inform you on events related to PTC products (user groups, conferences, training schedules, etc.)
- 2) Educate you on solutions that are available at PTC
- 3) Tips & Techniques using PTC Products

Note: These messages are compiled in the local PTC office and will be distributed via e-mail.

[Back To Top](#)