

# Arbortext® Styler™

Create stylesheets to automatically deliver predictable, high-quality product information in multiple languages and media output

Arbortext Styler is an innovative stylesheet tool that enables designers to configure stylesheets for automatic publishing of structured content using a single source of style. The stylesheets you create support one or multiple output media, without programming, enabling you to improve the quality and consistency of your information.

Stylesheets created in Arbortext Styler are used by Arbortext publishing software to transform XML content into output for print, PDF, HTML and Web pages, HTML Help, Microsoft® Word® and wireless devices. Arbortext Styler also provides foreign language support, enabling you to easily and automatically layout and publish localized product information.

## Benefits

### Ensure consistent, high-quality product information

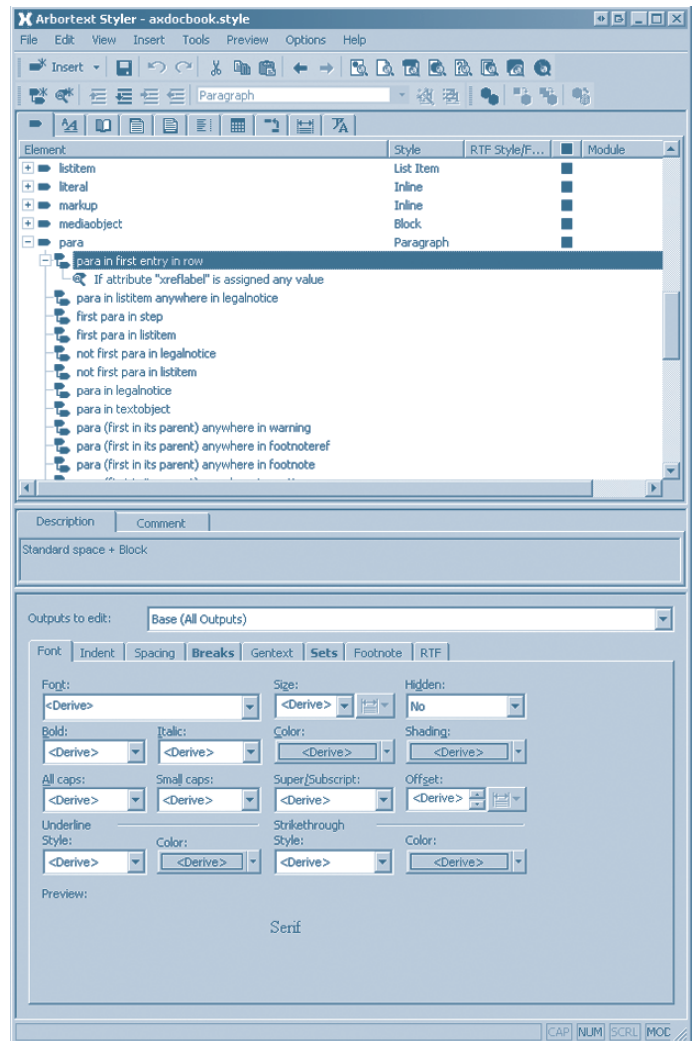
- Develop and enforce stylesheets to automate information layout and delivery
- Publish complex product information to one or multiple media—from the same stylesheet—without programming
- Automate layout tasks for multiple language content and regional formatting specifications

### Increase designer productivity and value

- Provide a single, easy-to-use interface for your comprehensive product information delivery requirements
- Simplify stylesheet creation across media to minimize programming
- Update stylesheets easily when requirements change
- Configure stylesheets to support multiple media types and formats automatically

### Reduce publishing production costs and cycle times

- Create a single-source of style to eliminate the development, maintenance and disparity of multiple stylesheets
- Eliminate desktop publishing costs for document production
- Extend stylesheets by writing styling criteria for specific output media through source-code edits



Arbortext Styler provides a single, easy-to-use interface for all product information layout requirements to consistently publish high-quality information across multiple media types automatically.

## Features

### Rapid Stylesheet Creation

- Simplify initial setup with style wizards
- Intuitive user interface
  - Page layout controls include page-size, margins, columns, footnotes and page numbers
  - Tabbed panels for elements, page sets, size definitions, headers and footers, and combined fonts
  - Tabbed sections for applying text formatting for elements, element contexts and conditions
  - Simply create additional contexts and conditions without needing to write XPath expressions or testing code
  - Highlight source-code edits
- Enable multiple levels of undo and redo
- Use and track 'property sets' to group together formatting properties into reusable components
- Add comments to stylesheet components to help development and maintenance

### Multichannel Support

- Support for multiple output types, such as print, PDF, Web, Microsoft Word and HTML Help, from a single stylesheet
- Define styles for all output types or for a specific output
- Preview content for print, PDF and Web media
- Support for configuring PDF bookmarks and populating PDF document properties
- Enable HTML 'chunking'
  - Split documents during publishing into logical chunks based on document hierarchy
  - Define chunk boundaries and configure table of contents for chunked outputs in Arbortext Styler
  - Support for DITA by using input file or content management object structure to define the initial chunk boundaries
- Output file metadata for inserting metadata into HTML, chunked HTML, and PDF outputs

### Conditional Formatting

- Set up conditional styling based on element context, attribute values and content tests
- Base styling on multi-level conditional tests

### Standards Support

- Import of existing FOSI stylesheet
- Export of multiple stylesheet formats, including XSL-HTML, XSL-FO, and FOSI, and Arbortext Advanced Print Publisher templates

### Automatically Generated Content

- Format tables of contents, indexes and other automatically generated lists, such as table lists and figure lists
- Enable automatically generated text, including: bullets and list numbers; text preceding or following an element; header/footer content; repeating titles; cross-references; and indexes with language-specific collation rules
- Edit generated content for each entry level to fine tune output

### Modular

- Use named property sets for modularity and reuse
- Support for modular stylesheets

### Extensible

- Modify the style code directly for specialized applications using an extensive mechanism
- Use source edits to provide tight control of output for specific media

## Learn More

For more information about Arbortext Styler and other Arbortext products, visit [www.ptc.com/go/arbortext](http://www.ptc.com/go/arbortext).